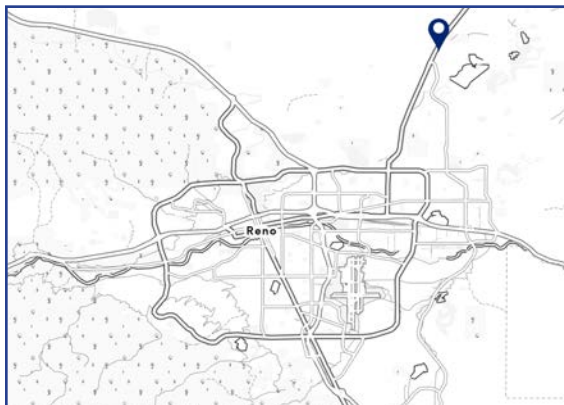


# KILEY RANCH | NWC PYRAMID WAY & WINGFIELD HILLS RD | SPARKS, NV



## ADDRESS:

NWC Pyramid Way & Wingfield Hills Rd, Sparks, NV

## SUMMARY:

- Bustling shopping center located in the heart of the thriving Reno/Tahoe metro area.
- Prime corner location at Pyramid Way & Wingfield Hills Rd with over 40,000 vehicles passing daily.
- Affluent trade area with average household incomes exceeding \$100,000 per year.
- Serves a growing population of more than 130,000 residents.
- Reno/Tahoe region draws approximately 3.9 million visitors annually.



**BARCLAY**  
GROUP

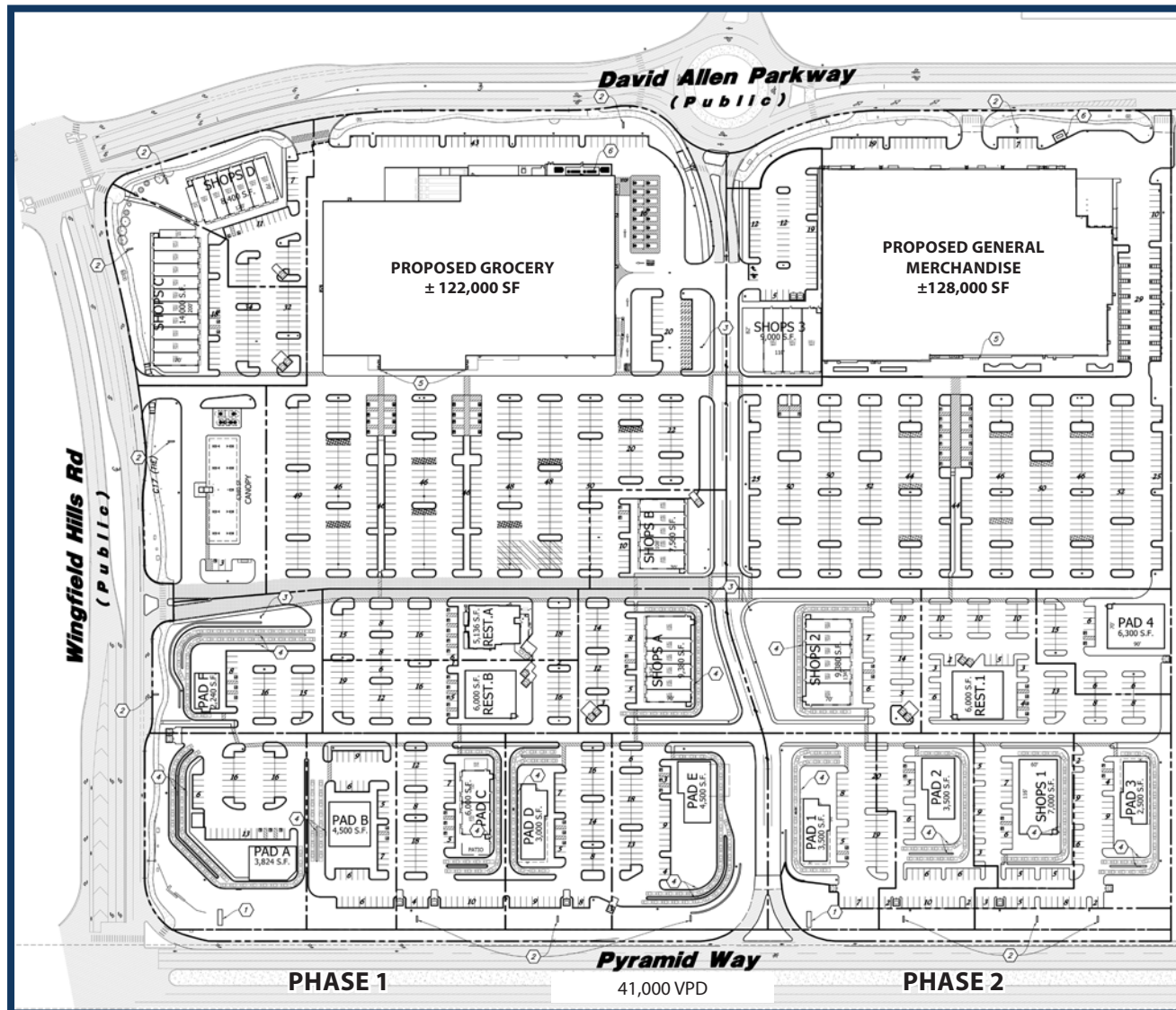
2415 E Camelback Rd, Suite 900  
Phoenix, Arizona, 85016  
[www.BarclayGroup.com](http://www.BarclayGroup.com)  
**Leasing: 602.224.4166**

**Brett Sheets**  
*Senior Vice President Leasing*  
602.224.4147 Direct  
602.908.8837 Cell  
[bsheets@barclaygroup.com](mailto:bsheets@barclaygroup.com)

**Kristin Walrod**  
*Director Leasing*  
602.224.4171 Direct  
480.521.4822 Cell  
[kwalrod@barclaygroup.com](mailto:kwalrod@barclaygroup.com)

**Matthew Archer**  
*Leasing Associate*  
602.224.4160 Direct  
602.908.8680 Cell  
[marcher@barclaygroup.com](mailto:marcher@barclaygroup.com)

# KILEY RANCH, SPARKS, NV | SITE PLAN



**ACRES: ±46.7 SQUARE FEET: ±413,591**



**BARCLAY**  
GROUP

2415 E Camelback Rd, Suite 900  
Phoenix, Arizona, 85016  
[www.BarclayGroup.com](http://www.BarclayGroup.com)  
**Leasing: 602.224.4166**

**Brett Sheets**  
Senior Vice President Leasing  
602.224.4147 Direct  
602.908.8837 Cell  
[bsheets@barclaygroup.com](mailto:bsheets@barclaygroup.com)

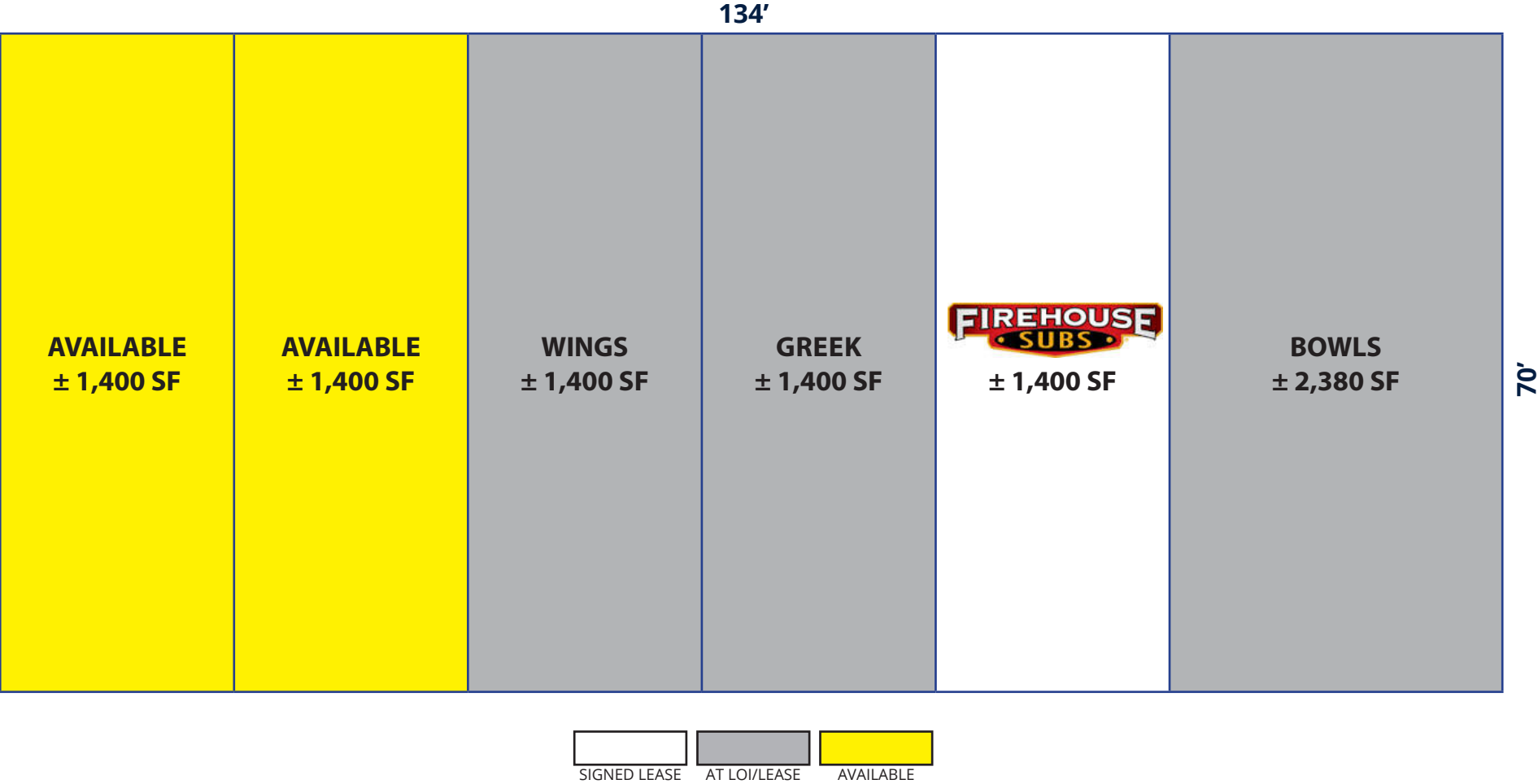
**Kristin Walrod**  
Director Leasing  
602.224.4171 Direct  
480.521.4822 Cell  
[kwalrod@barclaygroup.com](mailto:kwalrod@barclaygroup.com)

**Matthew Archer**  
Leasing Associate  
602.224.4160 Direct  
602.908.8680 Cell  
[marcher@barclaygroup.com](mailto:marcher@barclaygroup.com)





# KILEY RANCH, SPARKS, NV | SHOPS A



**SHOPS A: ±9,380 SF**



**BARCLAY**  
GROUP

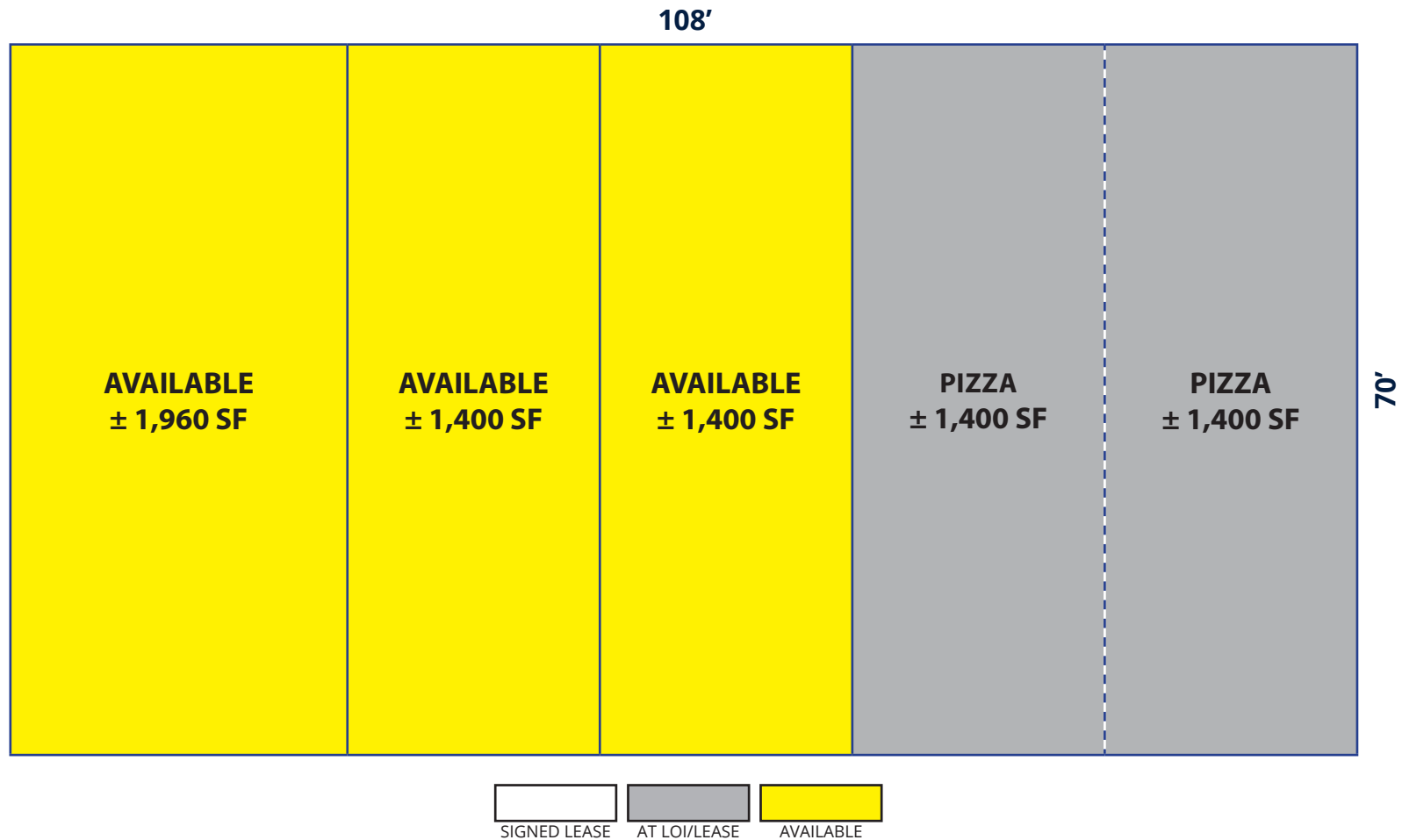
2415 E Camelback Rd, Suite 900  
Phoenix, Arizona, 85016  
[www.BarclayGroup.com](http://www.BarclayGroup.com)  
**Leasing: 602.224.4166**

**Brett Sheets**  
*Senior Vice President Leasing*  
602.224.4147 Direct  
602.908.8837 Cell  
[bsheets@barclaygroup.com](mailto:bsheets@barclaygroup.com)

**Kristin Walrod**  
*Director Leasing*  
602.224.4171 Direct  
480.521.4822 Cell  
[kwalrod@barclaygroup.com](mailto:kwalrod@barclaygroup.com)

**Matthew Archer**  
*Leasing Associate*  
602.224.4160 Direct  
602.908.8680 Cell  
[marcher@barclaygroup.com](mailto:marcher@barclaygroup.com)

# KILEY RANCH, SPARKS, NV | SHOPS B



**SHOPS B: ±7,560 SF**



**BARCLAY**  
GROUP

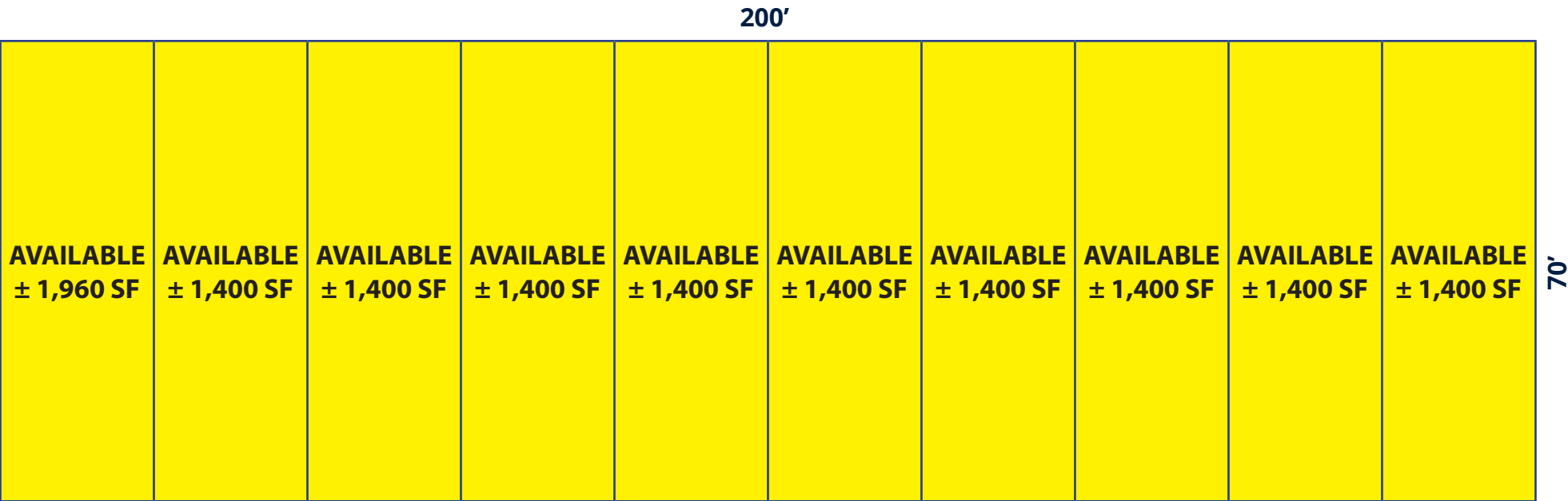
2415 E Camelback Rd, Suite 900  
Phoenix, Arizona, 85016  
[www.BarclayGroup.com](http://www.BarclayGroup.com)  
**Leasing: 602.224.4166**

**Brett Sheets**  
*Senior Vice President Leasing*  
602.224.4147 Direct  
602.908.8837 Cell  
[bsheets@barclaygroup.com](mailto:bsheets@barclaygroup.com)

**Kristin Walrod**  
*Director Leasing*  
602.224.4171 Direct  
480.521.4822 Cell  
[kwalrod@barclaygroup.com](mailto:kwalrod@barclaygroup.com)

**Matthew Archer**  
*Leasing Associate*  
602.224.4160 Direct  
602.908.8680 Cell  
[marcher@barclaygroup.com](mailto:marcher@barclaygroup.com)

# KILEY RANCH, SPARKS, NV | SHOPS C



SHOPS C: ±14,000 SF



**BARCLAY**  
GROUP

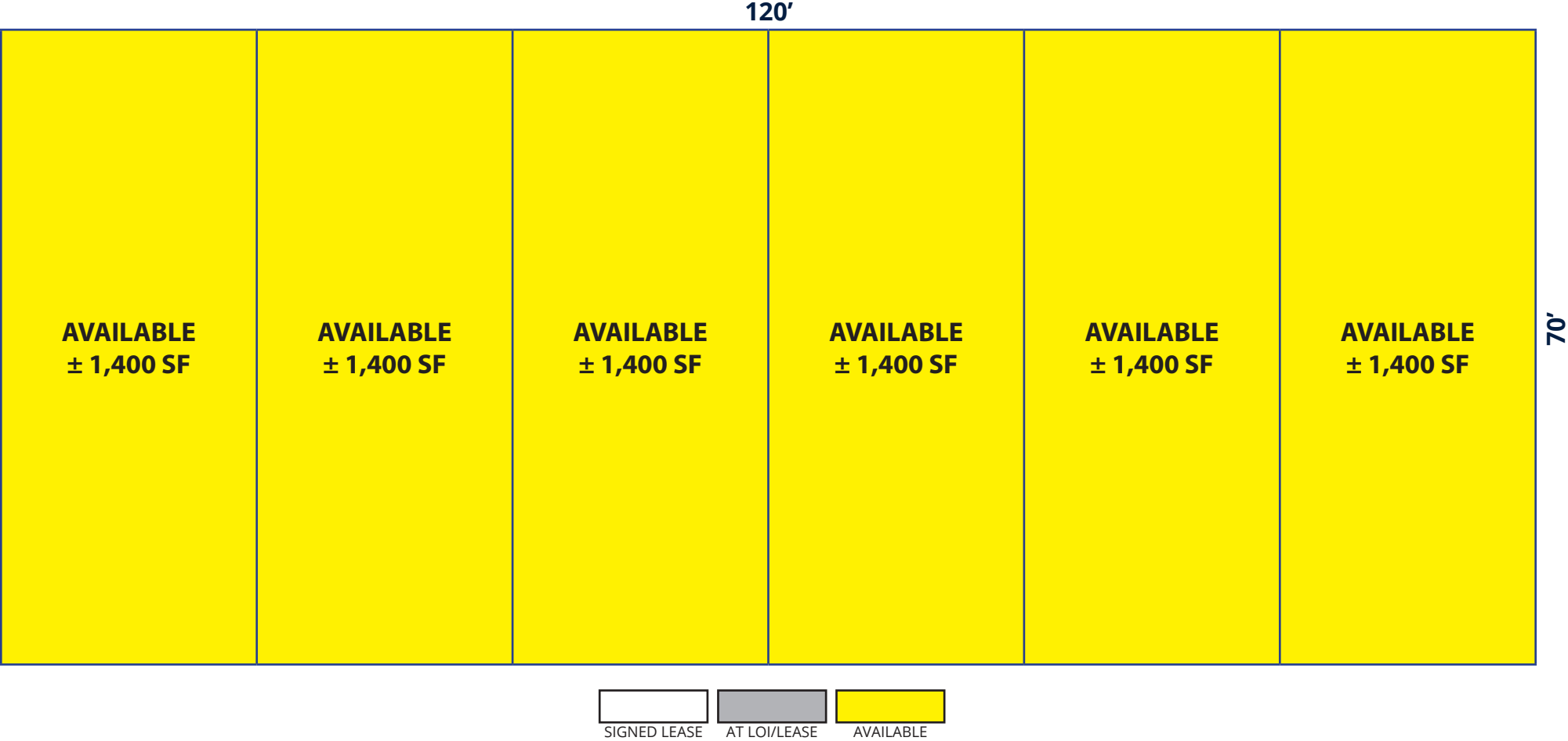
2415 E Camelback Rd, Suite 900  
Phoenix, Arizona, 85016  
www.BarclayGroup.com  
**Leasing: 602.224.4166**

**Brett Sheets**  
Senior Vice President Leasing  
602.224.4147 Direct  
602.908.8837 Cell  
bsheets@barclaygroup.com

**Kristin Walrod**  
Director Leasing  
602.224.4171 Direct  
480.521.4822 Cell  
kwalrod@barclaygroup.com

**Matthew Archer**  
Leasing Associate  
602.224.4160 Direct  
602.908.8680 Cell  
marcher@barclaygroup.com

# KILEY RANCH, SPARKS, NV | SHOPS D



**SHOPS D: ±8,400 SF**



**BARCLAY**  
GROUP

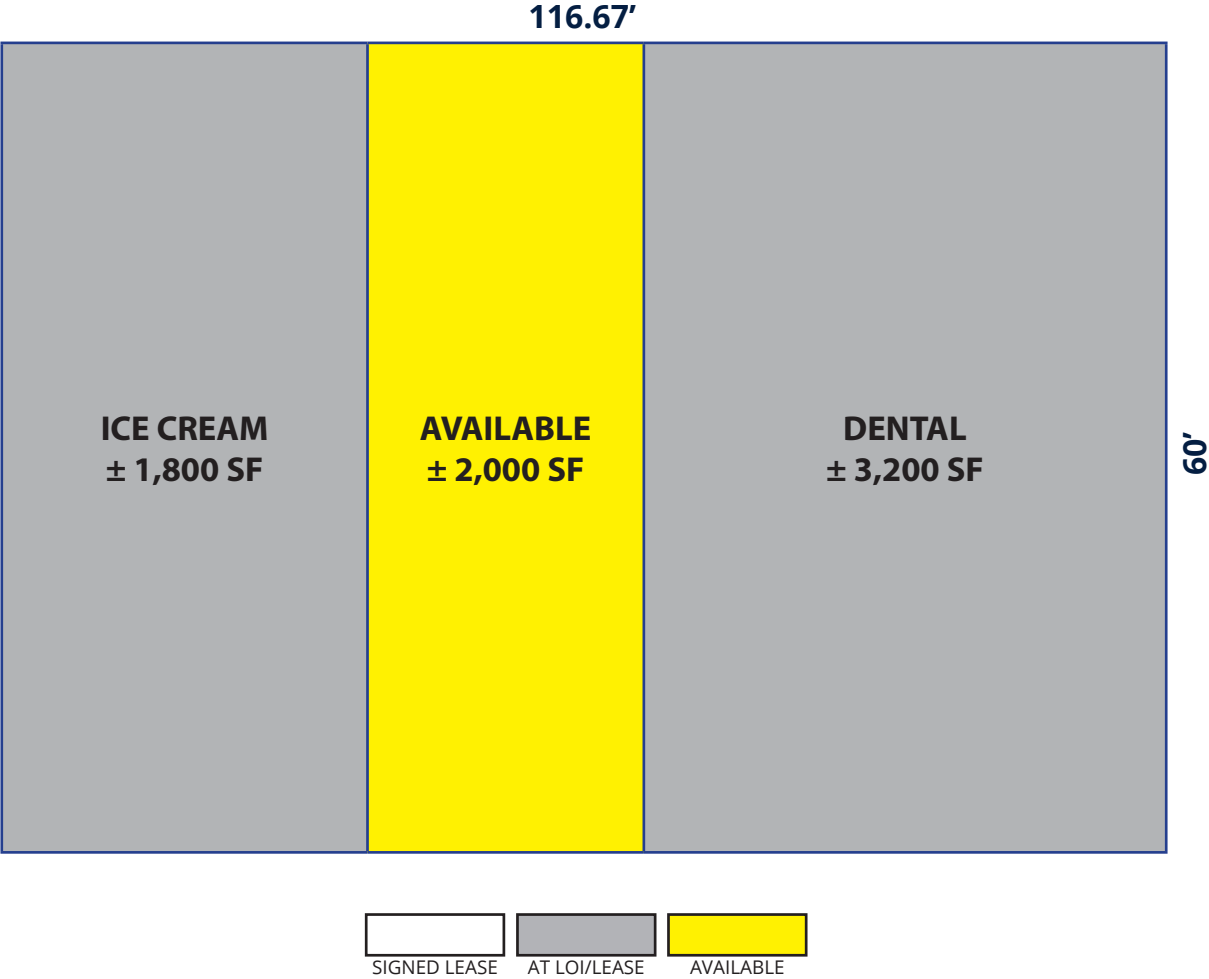
2415 E Camelback Rd, Suite 900  
Phoenix, Arizona, 85016  
[www.BarclayGroup.com](http://www.BarclayGroup.com)  
**Leasing: 602.224.4166**

**Brett Sheets**  
*Senior Vice President Leasing*  
602.224.4147 Direct  
602.908.8837 Cell  
[bsheets@barclaygroup.com](mailto:bsheets@barclaygroup.com)

**Kristin Walrod**  
*Director Leasing*  
602.224.4171 Direct  
480.521.4822 Cell  
[kwalrod@barclaygroup.com](mailto:kwalrod@barclaygroup.com)

**Matthew Archer**  
*Leasing Associate*  
602.224.4160 Direct  
602.908.8680 Cell  
[marcher@barclaygroup.com](mailto:marcher@barclaygroup.com)

# KILEY RANCH, SPARKS, NV | SHOPS 1



**SHOPS 1: ±7,000 SF**



**BARCLAY**  
GROUP

2415 E Camelback Rd, Suite 900  
Phoenix, Arizona, 85016  
[www.BarclayGroup.com](http://www.BarclayGroup.com)  
**Leasing: 602.224.4166**

**Brett Sheets**  
*Senior Vice President Leasing*  
602.224.4147 Direct  
602.908.8837 Cell  
[bsheets@barclaygroup.com](mailto:bsheets@barclaygroup.com)

**Kristin Walrod**  
*Director Leasing*  
602.224.4171 Direct  
480.521.4822 Cell  
[kwalrod@barclaygroup.com](mailto:kwalrod@barclaygroup.com)

**Matthew Archer**  
*Leasing Associate*  
602.224.4160 Direct  
602.908.8680 Cell  
[marcher@barclaygroup.com](mailto:marcher@barclaygroup.com)

# KILEY RANCH, SPARKS, NV | SHOPS 2



**SHOPS 2: ±9,380 SF**



**BARCLAY**  
GROUP

2415 E Camelback Rd, Suite 900  
Phoenix, Arizona, 85016  
[www.BarclayGroup.com](http://www.BarclayGroup.com)  
**Leasing: 602.224.4166**

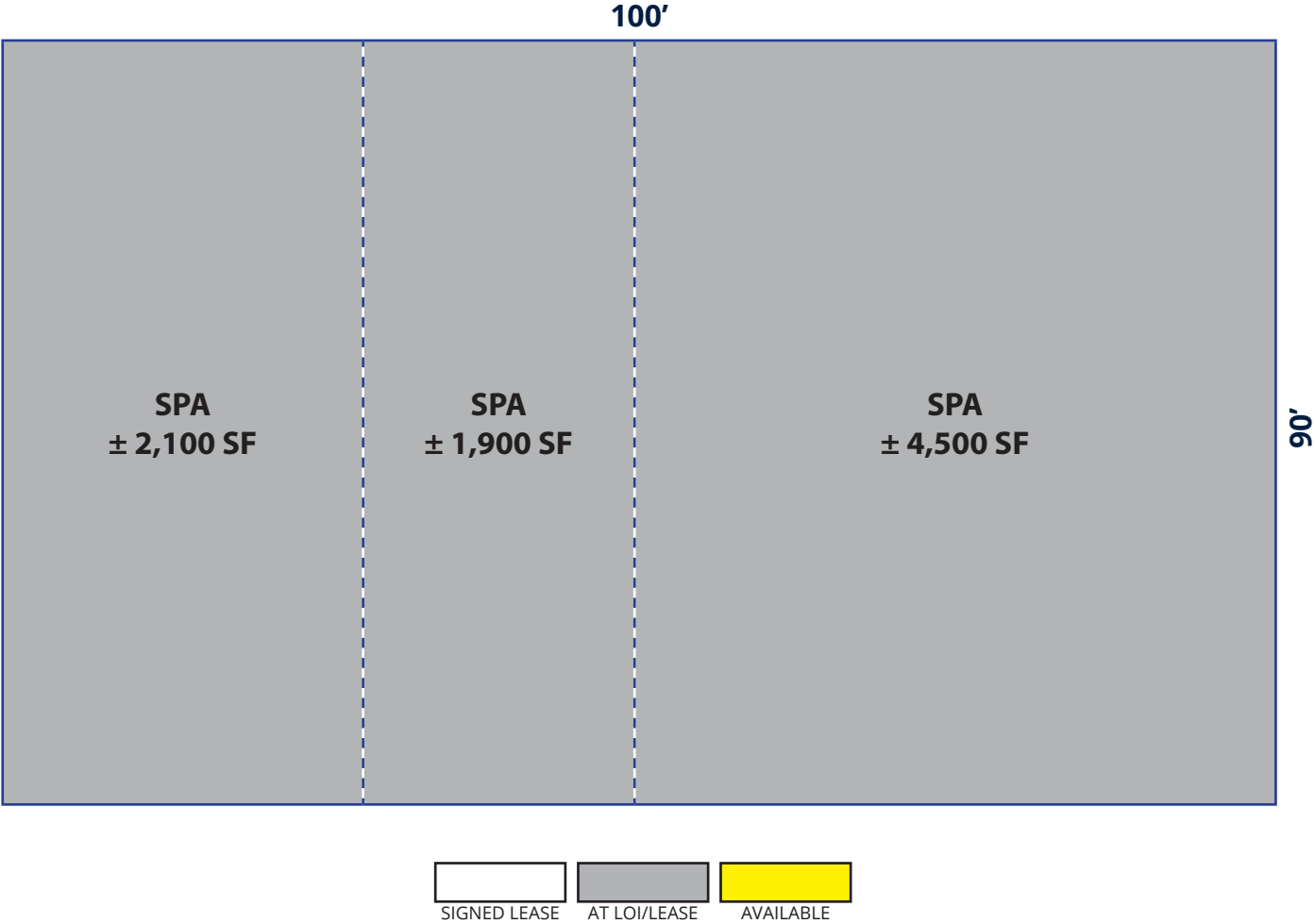
**Brett Sheets**  
*Senior Vice President Leasing*  
602.224.4147 Direct  
602.908.8837 Cell  
[bsheets@barclaygroup.com](mailto:bsheets@barclaygroup.com)

**Kristin Walrod**  
*Director Leasing*  
602.224.4171 Direct  
480.521.4822 Cell  
[kwalrod@barclaygroup.com](mailto:kwalrod@barclaygroup.com)

**Matthew Archer**  
*Leasing Associate*  
602.224.4160 Direct  
602.908.8680 Cell  
[marcher@barclaygroup.com](mailto:marcher@barclaygroup.com)



# KILEY RANCH, SPARKS, NV | SHOPS 3



**SHOPS 3: ±9,000 SF**



**BARCLAY**  
GROUP

2415 E Camelback Rd, Suite 900  
Phoenix, Arizona, 85016  
[www.BarclayGroup.com](http://www.BarclayGroup.com)  
**Leasing: 602.224.4166**

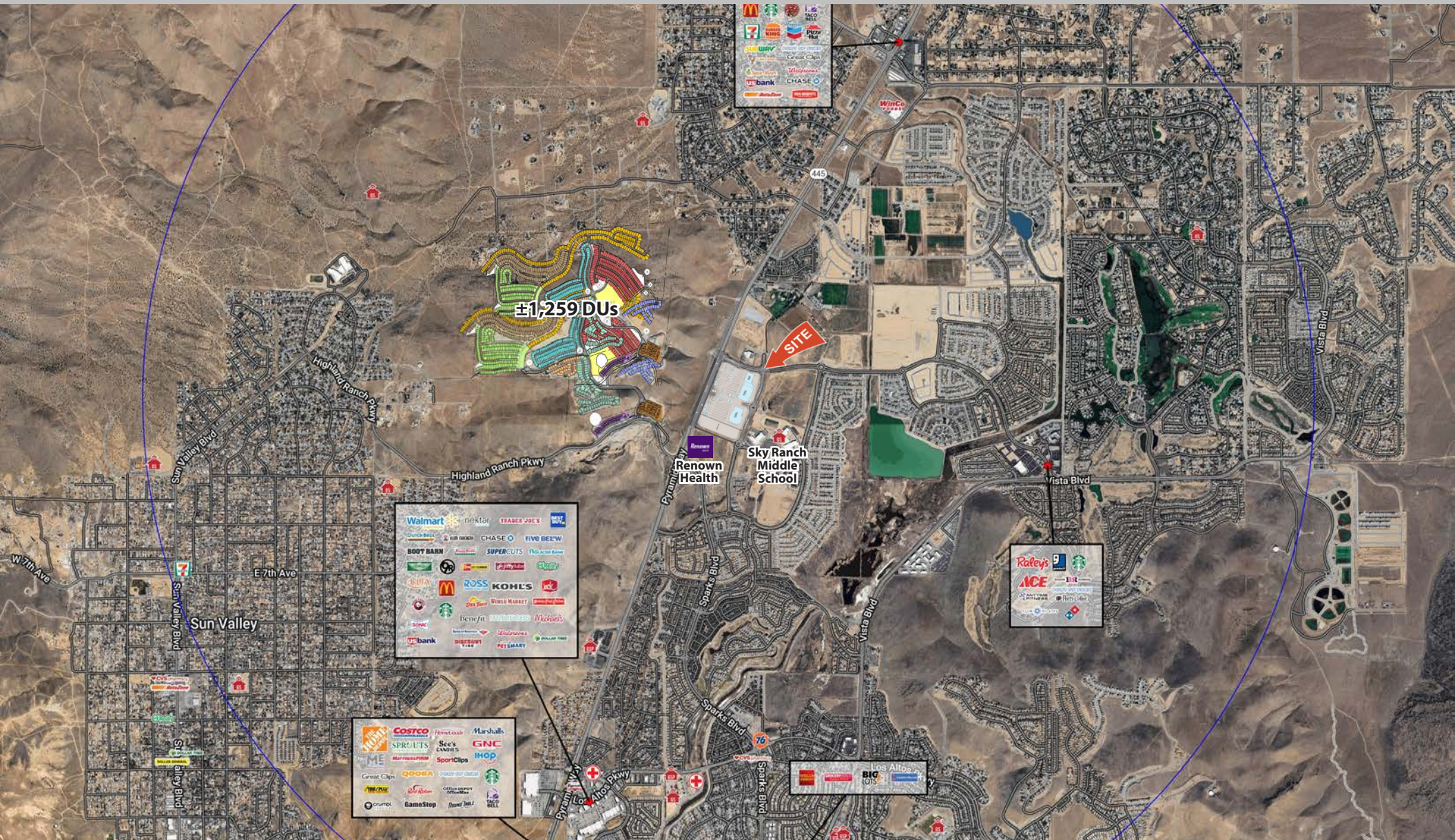
**Brett Sheets**  
*Senior Vice President Leasing*  
602.224.4147 Direct  
602.908.8837 Cell  
[bsheets@barclaygroup.com](mailto:bsheets@barclaygroup.com)

**Kristin Walrod**  
*Director Leasing*  
602.224.4171 Direct  
480.521.4822 Cell  
[kwalrod@barclaygroup.com](mailto:kwalrod@barclaygroup.com)

**Matthew Archer**  
*Leasing Associate*  
602.224.4160 Direct  
602.908.8680 Cell  
[marcher@barclaygroup.com](mailto:marcher@barclaygroup.com)



# KILEY RANCH, SPARKS, NV | AERIAL



**BARCLAY**  
GROUP

2415 E Camelback Rd, Suite 900  
Phoenix, Arizona, 85016  
[www.BarclayGroup.com](http://www.BarclayGroup.com)  
**Leasing: 602.224.4166**

**Brett Sheets**  
Senior Vice President Leasing  
602.224.4147 Direct  
602.908.8837 Cell  
[bsheets@barclaygroup.com](mailto:bsheets@barclaygroup.com)

**Kristin Walrod**  
Director Leasing  
602.224.4171 Direct  
480.521.4822 Cell  
[kwalrod@barclaygroup.com](mailto:kwalrod@barclaygroup.com)

**Matthew Archer**  
Leasing Associate  
602.224.4160 Direct  
602.908.8680 Cell  
[marcher@barclaygroup.com](mailto:marcher@barclaygroup.com)



# KILEY RANCH, SPARKS, NV | 3-MILE DEMOGRAPHICS

## ANNUAL HOUSEHOLD SPENDING



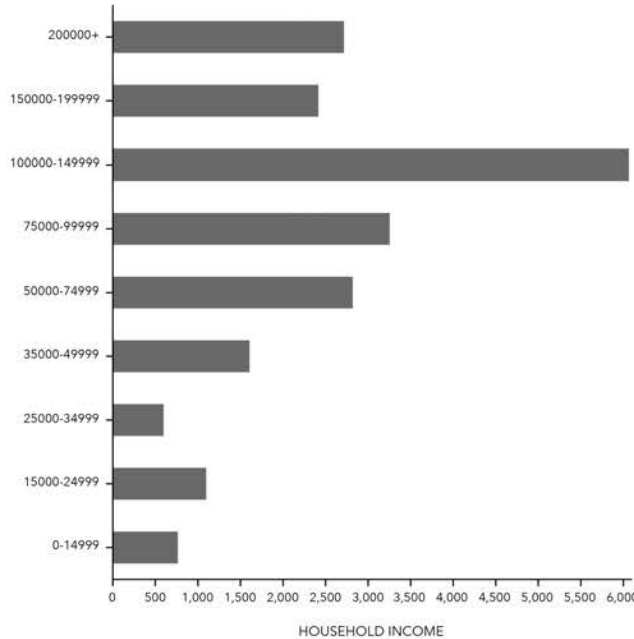
## KEY FACTS



## EDUCATION



## INCOME



## Tapestry Segments



## Average Household Size

for this area  
**2.79**  
which is more than the average for United States

Area	Value	0.00	4.00
This area	2.79		
Nevada	2.58		
United States	2.53		
Washoe County	2.47		

## EMPLOYMENT



Source: Esri Business Analyst



**BARCLAY**  
GROUP

2415 E Camelback Rd, Suite 900  
Phoenix, Arizona, 85016  
www.BarclayGroup.com  
**Leasing: 602.224.4166**

**Brett Sheets**  
Senior Vice President Leasing  
602.224.4147 Direct  
602.908.8837 Cell  
bsheets@barclaygroup.com

**Kristin Walrod**  
Director Leasing  
602.224.4171 Direct  
480.521.4822 Cell  
kwalrod@barclaygroup.com

**Matthew Archer**  
Leasing Associate  
602.224.4160 Direct  
602.908.8680 Cell  
marcher@barclaygroup.com