

# LOOP 303 & CACTUS RD | SWC CACTUS ROAD & SARIVAL ROAD SURPRISE, AZ

*New Fry's Marketplace and EOS Fitness Anchored Center Planned Summer 2025 Opening*



## ADDRESS:

SWC Cactus Rd & Sarival Rd, Surprise, Arizona

## SUMMARY:

Located in the rapidly growing community of Surprise, Arizona, this grocery anchored center's 3-mile trade area boasts an average household income of over \$96,000 and a population in excess of 70,000. In addition, there are over 20,000 households in the trade area with nearly 10,000 additional units underway. Total traffic counts exceed 95,000 vehicles per day.

## SHOPS AND PADS AVAILABLE



**BARCLAY**  
GROUP

2415 E Camelback Rd, Suite 900  
Phoenix, Arizona, 85016  
www.BarclayGroup.com

### Brett Sheets

Senior Vice President Leasing  
602.224.4147 Direct  
602.908.8837 Cell  
bsheets@barclaygroup.com

### Kristin Walrod

Senior Leasing Manager  
602.224.4171 Direct  
480.521.4822 Cell  
kwalrod@barclaygroup.com

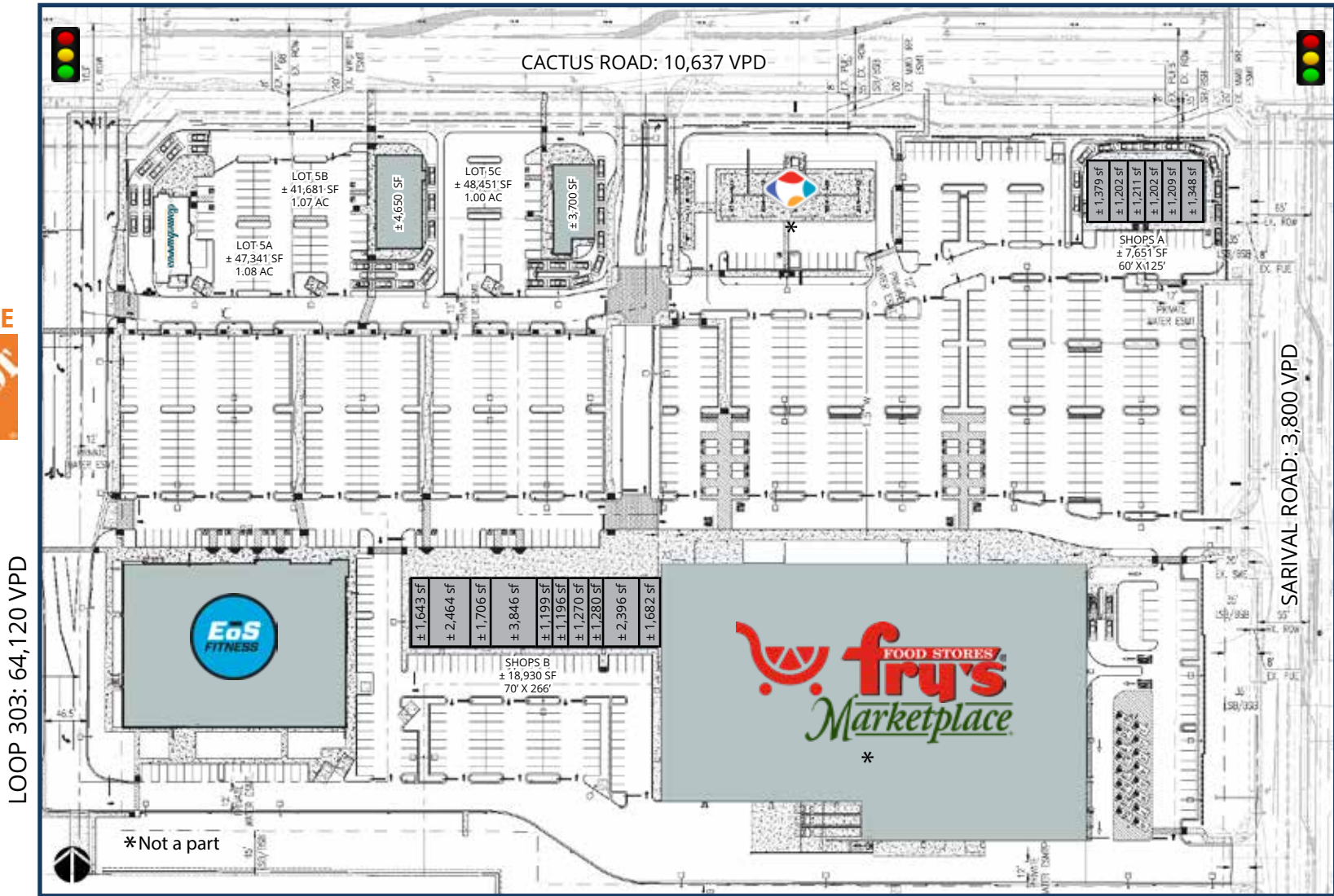
### Matthew Archer

Leasing Associate  
602.224.4160 Direct  
602.908.8680 Cell  
marcher@barclaygroup.com

# LOOP 303 & CACTUS RD | SITE PLAN

**ACRES:**  
±20.00

**SQUARE FEET:**  
±208,256



LOOP 303: 64,120 VPD

CACTUS ROAD: 10,637 VPD

SARIVAL ROAD: 3,800 VPD

\*Not a part

## SHOPS AND PADS AVAILABLE



**BARCLAY GROUP**

2415 E Camelback Rd, Suite 900  
Phoenix, Arizona, 85016  
www.BarclayGroup.com

**Brett Sheets**  
Senior Vice President Leasing  
602.224.4147 Direct  
602.908.8837 Cell  
bsheets@barclaygroup.com

**Kristin Walrod**  
Senior Leasing Manager  
602.224.4171 Direct  
480.521.4822 Cell  
kwalrod@barclaygroup.com

**Matthew Archer**  
Leasing Associate  
602.224.4160 Direct  
602.908.8680 Cell  
marcher@barclaygroup.com

# LOOP 303 & CACTUS RD | SHOPS A



- SIGNED LEASE
- AT LOI/LEASE
- AVAILABLE



**BARCLAY**  
GROUP

2415 E Camelback Rd, Suite 900  
Phoenix, Arizona, 85016  
[www.BarclayGroup.com](http://www.BarclayGroup.com)

**Brett Sheets**  
Senior Vice President Leasing  
602.224.4147 Direct  
602.908.8837 Cell  
[bsheets@barclaygroup.com](mailto:bsheets@barclaygroup.com)

**Kristin Walrod**  
Senior Leasing Manager  
602.224.4171 Direct  
480.521.4822 Cell  
[kwalrod@barclaygroup.com](mailto:kwalrod@barclaygroup.com)

**Matthew Archer**  
Leasing Associate  
602.224.4160 Direct  
602.908.8680 Cell  
[marcher@barclaygroup.com](mailto:marcher@barclaygroup.com)



# LOOP 303 & CACTUS RD | SHOPS B



±1,643 sf	±2,464 sf	±1,706 sf	±3,846 sf	±1,199 sf	±1,196 sf	±1,270 sf	±1,270 sf	±2,396 sf	±1,682 sf
-----------	-----------	-----------	-----------	-----------	-----------	-----------	-----------	-----------	-----------

AT LOI/LEASE
  SIGNED LEASE
  AVAILABLE



**BARCLAY**  
GROUP

2415 E Camelback Rd, Suite 900  
Phoenix, Arizona, 85016  
[www.BarclayGroup.com](http://www.BarclayGroup.com)

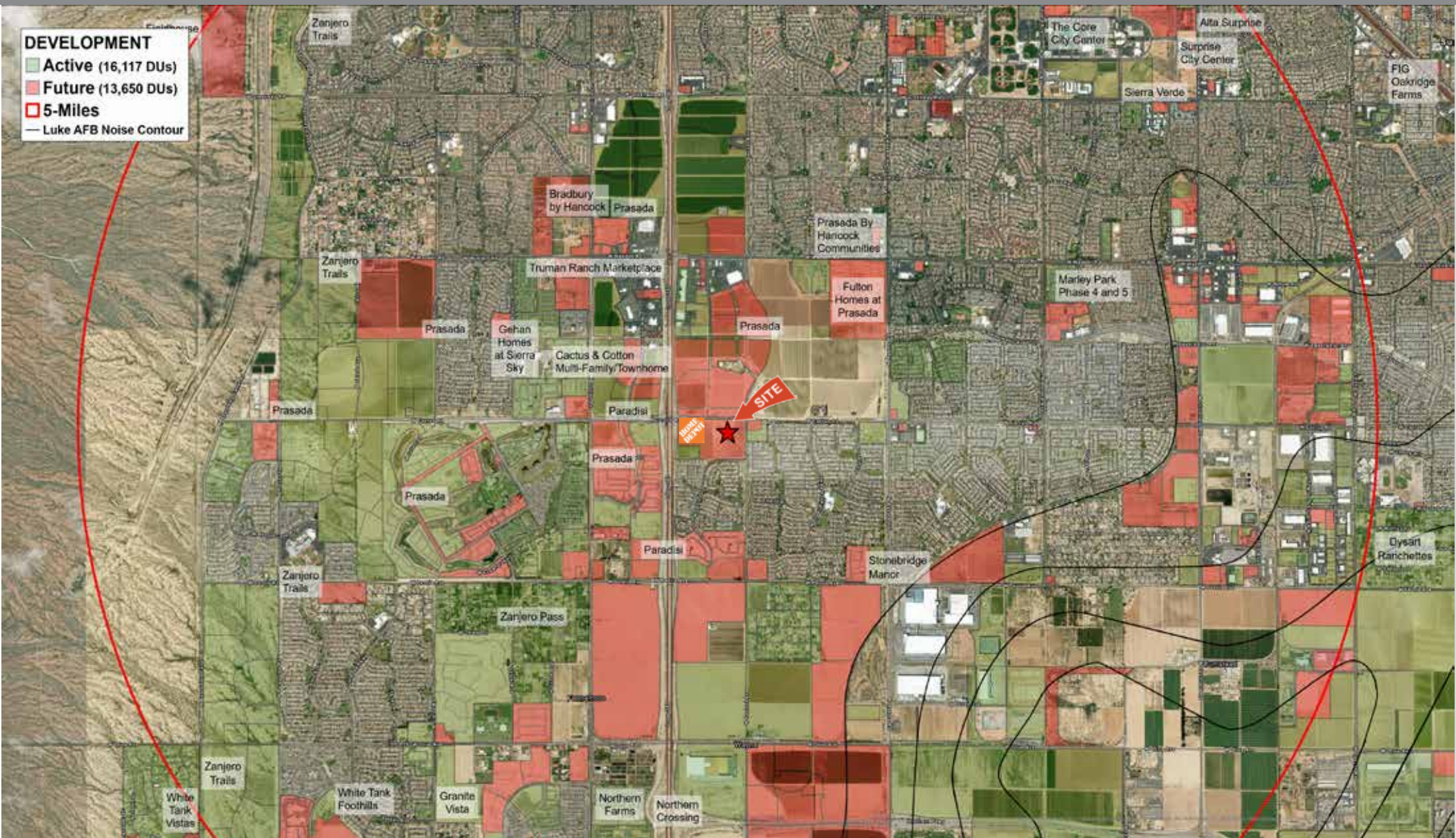
**Brett Sheets**  
Senior Vice President Leasing  
602.224.4147 Direct  
602.908.8837 Cell  
[bsheets@barclaygroup.com](mailto:bsheets@barclaygroup.com)

**Kristin Walrod**  
Senior Leasing Manager  
602.224.4171 Direct  
480.521.4822 Cell  
[kwalrod@barclaygroup.com](mailto:kwalrod@barclaygroup.com)

**Matthew Archer**  
Leasing Associate  
602.224.4160 Direct  
602.908.8680 Cell  
[marcher@barclaygroup.com](mailto:marcher@barclaygroup.com)



# LOOP 303 & CACTUS RD | TRADE AREA



**BARCLAY**  
GROUP

2415 E Camelback Rd, Suite 900  
Phoenix, Arizona, 85016  
[www.BarclayGroup.com](http://www.BarclayGroup.com)

**Brett Sheets**  
Senior Vice President Leasing  
602.224.4147 Direct  
602.908.8837 Cell  
[bsheets@barclaygroup.com](mailto:bsheets@barclaygroup.com)

**Kristin Walrod**  
Senior Leasing Manager  
602.224.4171 Direct  
480.521.4822 Cell  
[kwalrod@barclaygroup.com](mailto:kwalrod@barclaygroup.com)

**Matthew Archer**  
Leasing Associate  
602.224.4160 Direct  
602.908.8680 Cell  
[marcher@barclaygroup.com](mailto:marcher@barclaygroup.com)



# LOOP 303 & CACTUS RD | 5 MILE DEMOGRAPHICS



Source: Esri Business Analyst



**BARCLAY**  
GROUP

2415 E Camelback Rd, Suite 900  
Phoenix, Arizona, 85016  
www.BarclayGroup.com

**Brett Sheets**  
Senior Vice President Leasing  
602.224.4147 Direct  
602.908.8837 Cell  
bsheets@barclaygroup.com

**Kristin Walrod**  
Senior Leasing Manager  
602.224.4171 Direct  
480.521.4822 Cell  
kwalrod@barclaygroup.com

**Matthew Archer**  
Leasing Associate  
602.224.4160 Direct  
602.908.8680 Cell  
marcher@barclaygroup.com