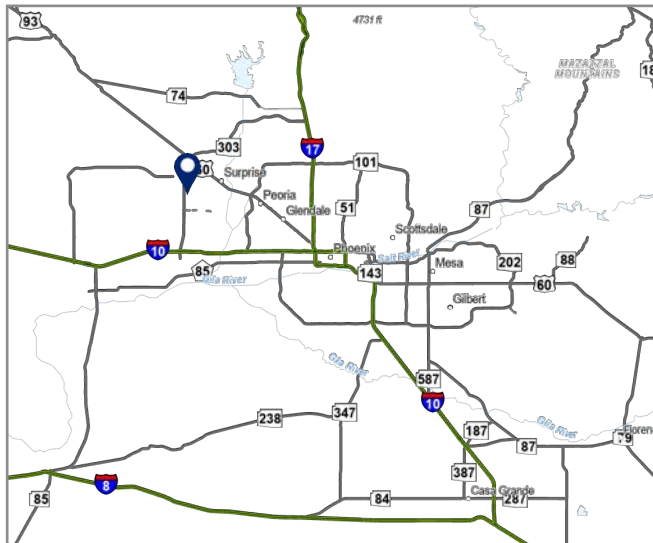
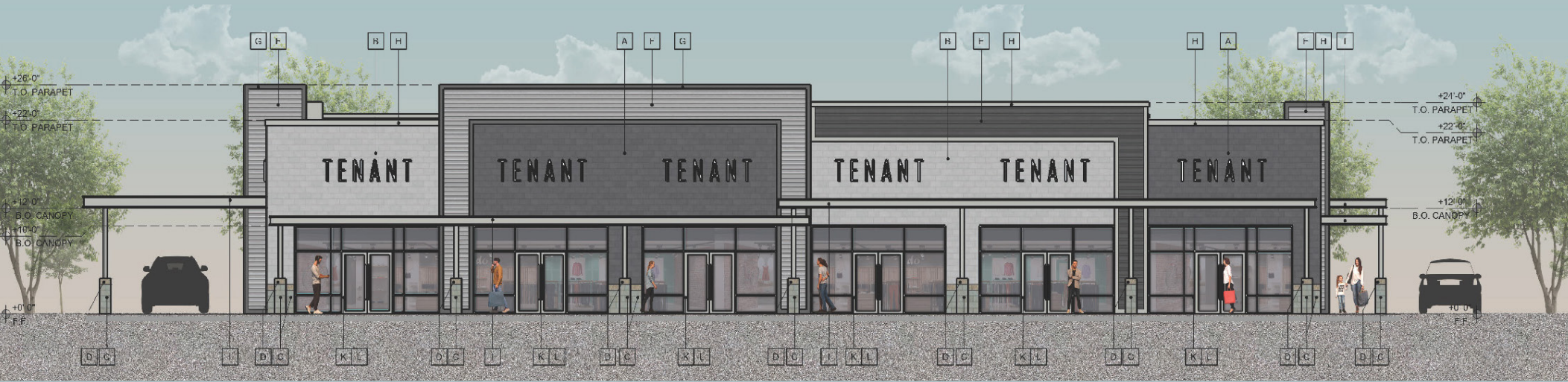


# SYCAMORE FARMS | SWC CACTUS ROAD & SARIVAL ROAD SURPRISE, AZ

*New Fry's Marketplace and EOS Fitness Anchored Center Planned Fall 2025 Opening*



## ADDRESS:

SWC Cactus Rd & Sarival Rd, Surprise, Arizona

## SUMMARY:

- Located in the rapidly growing community of Surprise, Arizona
- Average household income of over \$96,000
- Population in excess of 70,000
- Over 20,000 households in the trade area with nearly 10,000 additional units underway
- Total traffic counts exceed 95,000 vehicles per day

## SHOPS AND PADS AVAILABLE



**BARCLAY**  
GROUP

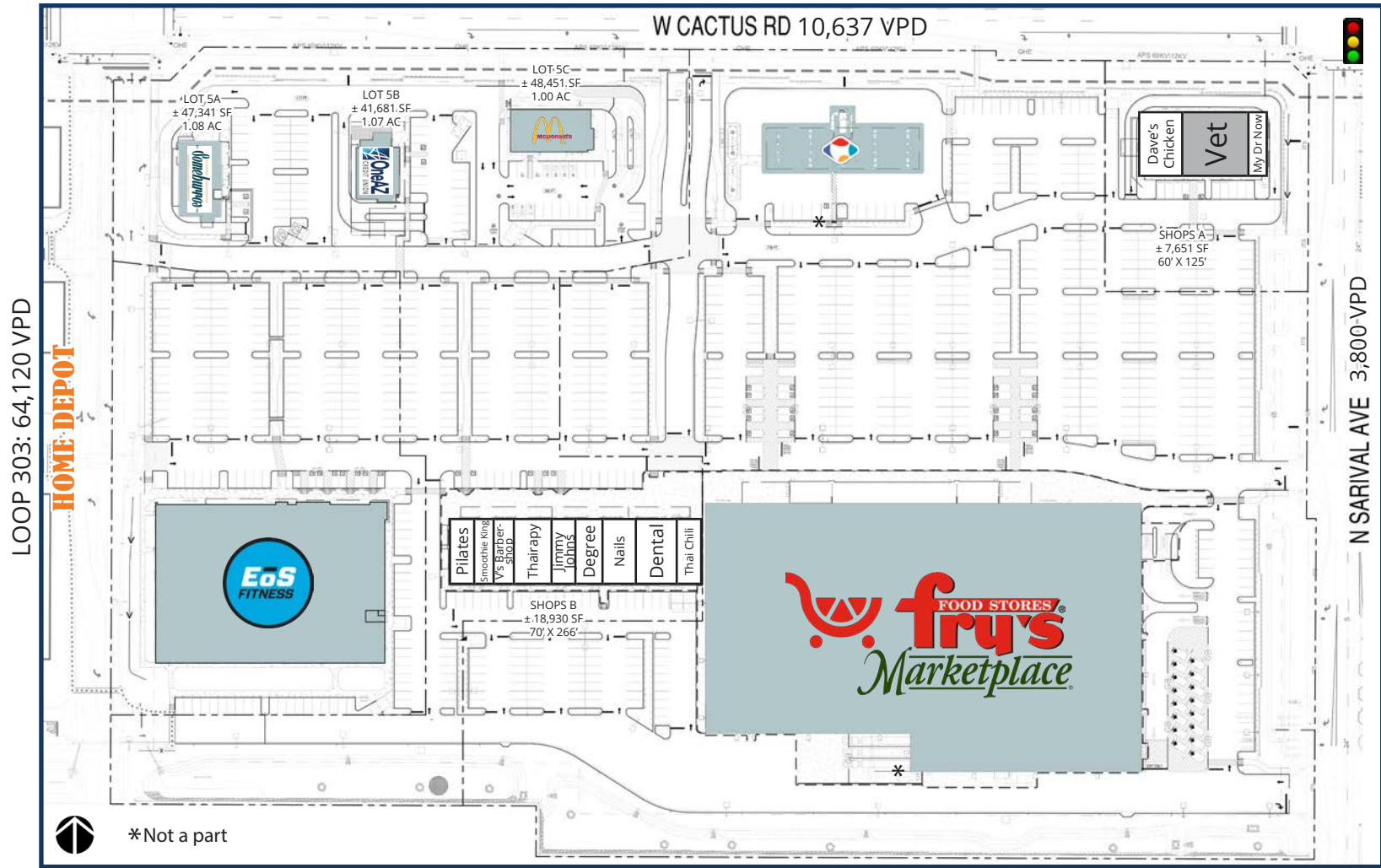
2415 E Camelback Rd, Suite 900  
Phoenix, Arizona, 85016  
[www.BarclayGroup.com](http://www.BarclayGroup.com)  
**Leasing: 602.224.4166**

**Brett Sheets**  
Senior Vice President Leasing  
602.224.4147 Direct  
602.908.8837 Cell  
[bsheets@barclaygroup.com](mailto:bsheets@barclaygroup.com)

**Kristin Walrod**  
Director Leasing  
602.224.4171 Direct  
480.521.4822 Cell  
[kwalrod@barclaygroup.com](mailto:kwalrod@barclaygroup.com)

**Matthew Archer**  
Leasing Associate  
602.224.4160 Direct  
602.908.8680 Cell  
[marcher@barclaygroup.com](mailto:marcher@barclaygroup.com)

# SYCAMORE FARMS | SITE PLAN



**ACRES:**  
±20.00

**SQUARE FEET:**  
±208,256

## SHOPS AND PADS AVAILABLE



**BARCLAY**  
GROUP

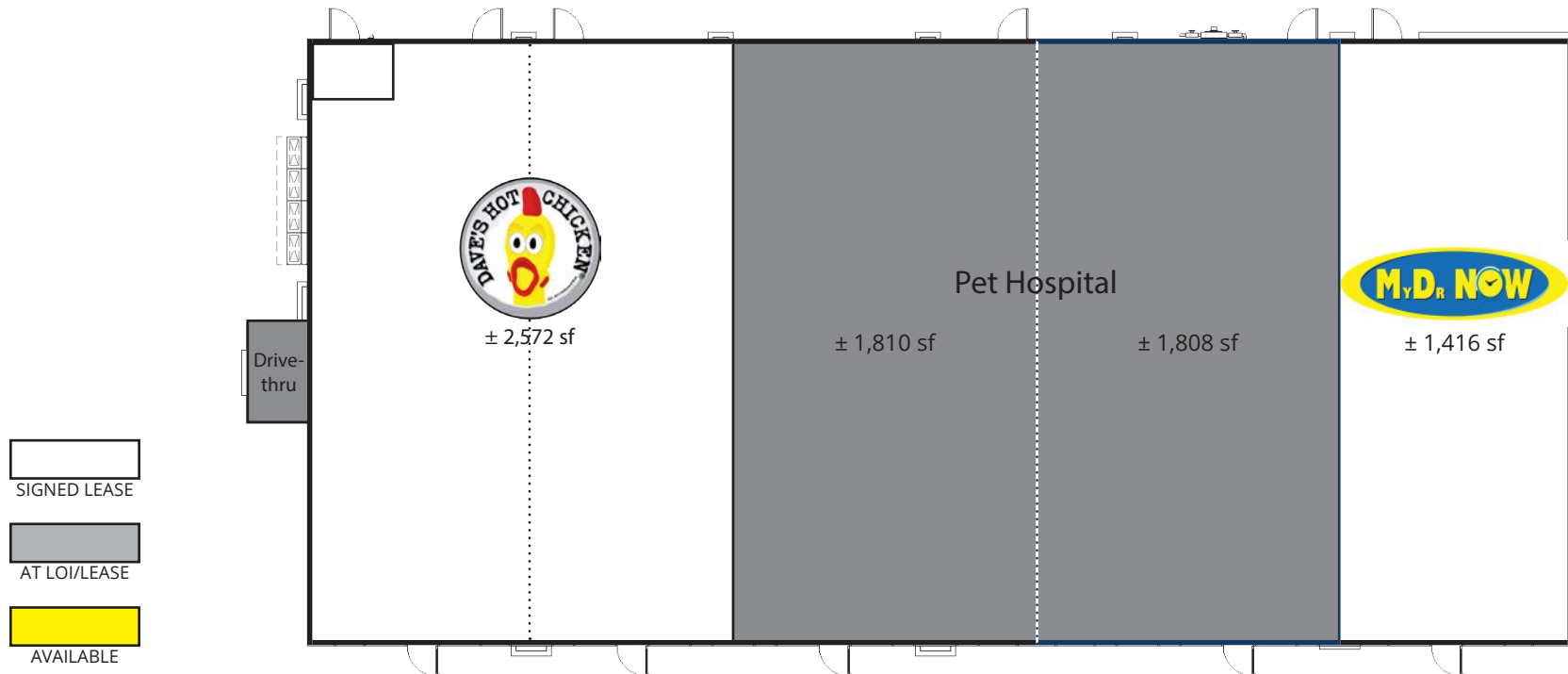
2415 E Camelback Rd, Suite 900  
Phoenix, Arizona, 85016  
[www.BarclayGroup.com](http://www.BarclayGroup.com)  
**Leasing: 602.224.4166**

**Brett Sheets**  
Senior Vice President Leasing  
602.224.4147 Direct  
602.908.8837 Cell  
[bsheets@barclaygroup.com](mailto:bsheets@barclaygroup.com)

**Kristin Walrod**  
Director Leasing  
602.224.4171 Direct  
480.521.4822 Cell  
[kwalrod@barclaygroup.com](mailto:kwalrod@barclaygroup.com)

**Matthew Archer**  
Leasing Associate  
602.224.4160 Direct  
602.908.8680 Cell  
[marcher@barclaygroup.com](mailto:marcher@barclaygroup.com)

# SYCAMORE FARMS | SHOPS A



**BARCLAY**  
GROUP

2415 E Camelback Rd, Suite 900  
Phoenix, Arizona, 85016  
[www.BarclayGroup.com](http://www.BarclayGroup.com)  
**Leasing: 602.224.4166**

**Brett Sheets**  
Senior Vice President Leasing  
602.224.4147 Direct  
602.908.8837 Cell  
[bsheets@barclaygroup.com](mailto:bsheets@barclaygroup.com)

**Kristin Walrod**  
Director Leasing  
602.224.4171 Direct  
480.521.4822 Cell  
[kwalrod@barclaygroup.com](mailto:kwalrod@barclaygroup.com)

**Matthew Archer**  
Leasing Associate  
602.224.4160 Direct  
602.908.8680 Cell  
[marcher@barclaygroup.com](mailto:marcher@barclaygroup.com)



# SYCAMORE FARMS | SHOPS B



 ±1,643 sf	 ±1,264 sf	 ±1,200 sf	 ±2,416 sf	 ±1,215 sf	 ±1,923 sf	Elite Nail Gallery ±2,394 sf	 ±4,926 sf	 ±1,682 sf
------------------------------------------------------------------------------------------------	------------------------------------------------------------------------------------------------	------------------------------------------------------------------------------------------------	------------------------------------------------------------------------------------------------	------------------------------------------------------------------------------------------------	-------------------------------------------------------------------------------------------------	---------------------------------	--------------------------------------------------------------------------------------------------	--------------------------------------------------------------------------------------------------

AT LOI/LEASE

SIGNED LEASE

AVAILABLE



**BARCLAY**  
GROUP

2415 E Camelback Rd, Suite 900  
Phoenix, Arizona, 85016  
www.BarclayGroup.com  
**Leasing: 602.224.4166**

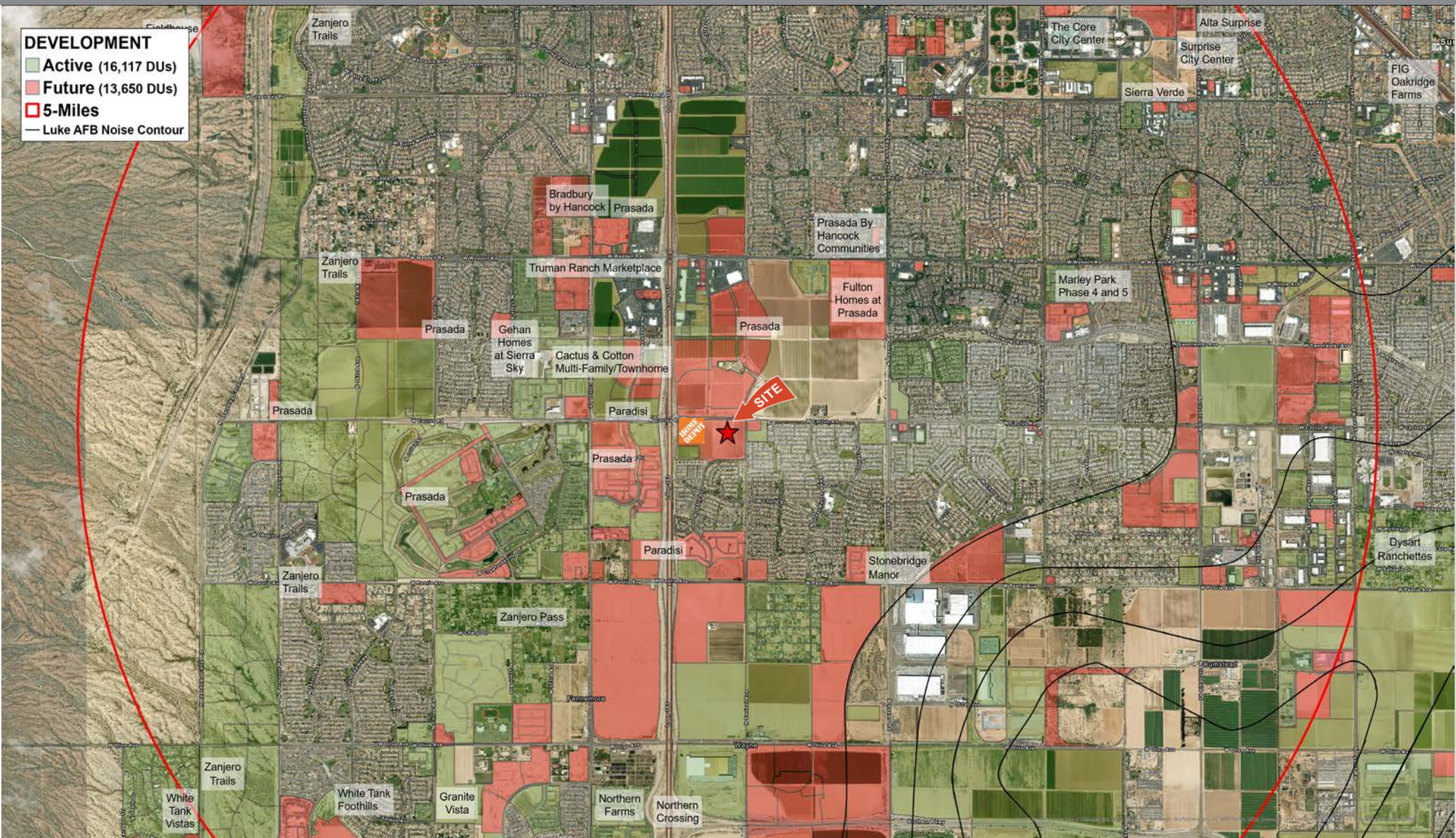
**Brett Sheets**  
Senior Vice President Leasing  
602.224.4147 Direct  
602.908.8837 Cell  
bsheets@barclaygroup.com

**Kristin Walrod**  
Director Leasing  
602.224.4171 Direct  
480.521.4822 Cell  
kwalrod@barclaygroup.com

**Matthew Archer**  
Leasing Associate  
602.224.4160 Direct  
602.908.8680 Cell  
marcher@barclaygroup.com



# SYCAMORE FARMS | TRADE AREA



**BARCLAY**  
GROUP

2415 E Camelback Rd, Suite 900  
Phoenix, Arizona, 85016  
[www.BarclayGroup.com](http://www.BarclayGroup.com)  
**Leasing: 602.224.4166**

**Brett Sheets**  
Senior Vice President Leasing  
602.224.4147 Direct  
602.908.8837 Cell  
[bsheets@barclaygroup.com](mailto:bsheets@barclaygroup.com)

**Kristin Walrod**  
Director Leasing  
602.224.4171 Direct  
480.521.4822 Cell  
[kwalrod@barclaygroup.com](mailto:kwalrod@barclaygroup.com)

**Matthew Archer**  
Leasing Associate  
602.224.4160 Direct  
602.908.8680 Cell  
[marcher@barclaygroup.com](mailto:marcher@barclaygroup.com)



# SYCAMORE FARMS | 5 MILE DEMOGRAPHICS

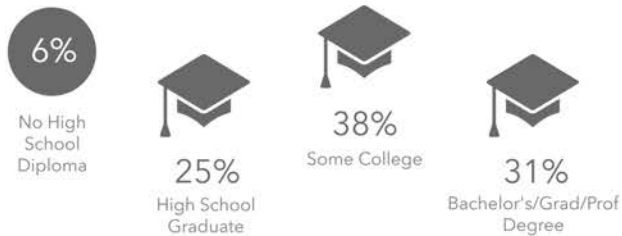
## ANNUAL HOUSEHOLD SPENDING



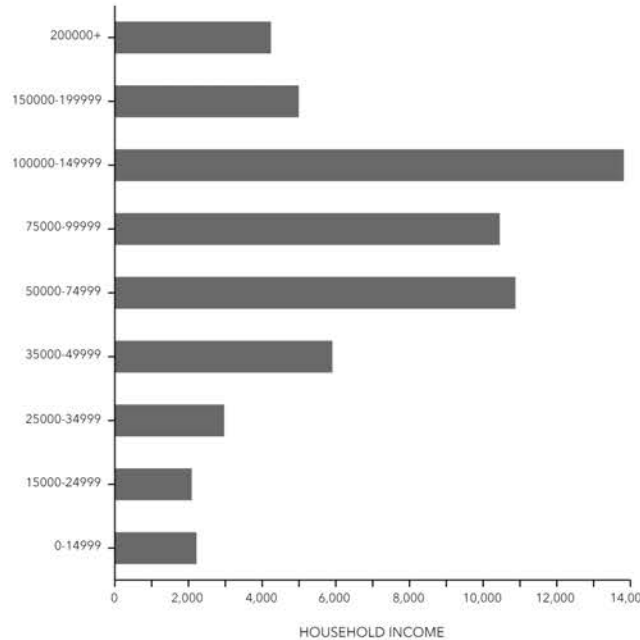
## KEY FACTS



## EDUCATION



## INCOME



## Tapestry Segments

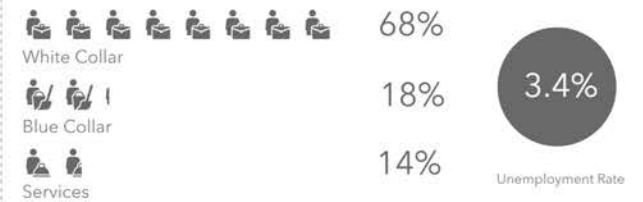


## Average Household Size

for this area  
**2.83** which is more than the average for United States

Area	Value	0.00	4.00
This area	2.83		
Maricopa County	2.63		
Arizona	2.57		
United States	2.53		

## EMPLOYMENT



Source: Esri Business Analyst



**BARCLAY**  
GROUP

2415 E Camelback Rd, Suite 900  
Phoenix, Arizona, 85016  
www.BarclayGroup.com  
**Leasing: 602.224.4166**

**Brett Sheets**  
Senior Vice President Leasing  
602.224.4147 Direct  
602.908.8837 Cell  
bsheets@barclaygroup.com

**Kristin Walrod**  
Director Leasing  
602.224.4171 Direct  
480.521.4822 Cell  
kwalrod@barclaygroup.com

**Matthew Archer**  
Leasing Associate  
602.224.4160 Direct  
602.908.8680 Cell  
marcher@barclaygroup.com