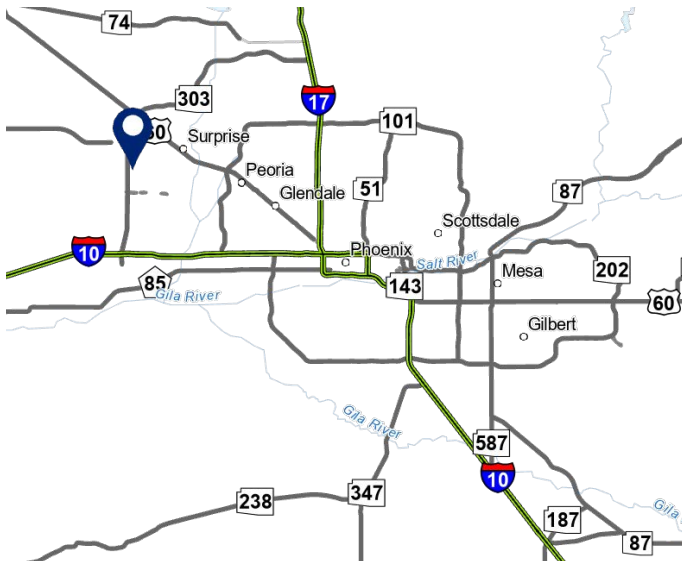


# LOOP 303 & CACTUS RD | SWC CACTUS ROAD & SARIVAL ROAD SURPRISE, AZ

*New Fry's Marketplace and EOS Fitness Anchored Center Planned Summer 2025 Opening*



## ADDRESS:

SWC Cactus Rd & Sarival Rd, Surprise, Arizona

## SUMMARY:

Located in the rapidly growing community of Surprise, Arizona, this grocery anchored center's 3-mile trade area boasts an average household income of over \$96,000 and a population in excess of 70,000. In addition, there are over 20,000 households in the trade area with nearly 10,000 additional units underway. Total traffic counts exceed 95,000 vehicles per day.

## SHOPS AND PADS AVAILABLE



**BARCLAY**  
GROUP

2415 E Camelback Rd, Suite 900  
Phoenix, Arizona, 85016  
[www.BarclayGroup.com](http://www.BarclayGroup.com)

### Brett Sheets

Senior Vice President Leasing  
602.224.4147 Direct  
602.908.8837 Cell  
[bsheets@barclaygroup.com](mailto:bsheets@barclaygroup.com)

### Kristin Walrod

Senior Leasing Manager  
602.224.4171 Direct  
480.521.4822 Cell  
[kwalrod@barclaygroup.com](mailto:kwalrod@barclaygroup.com)

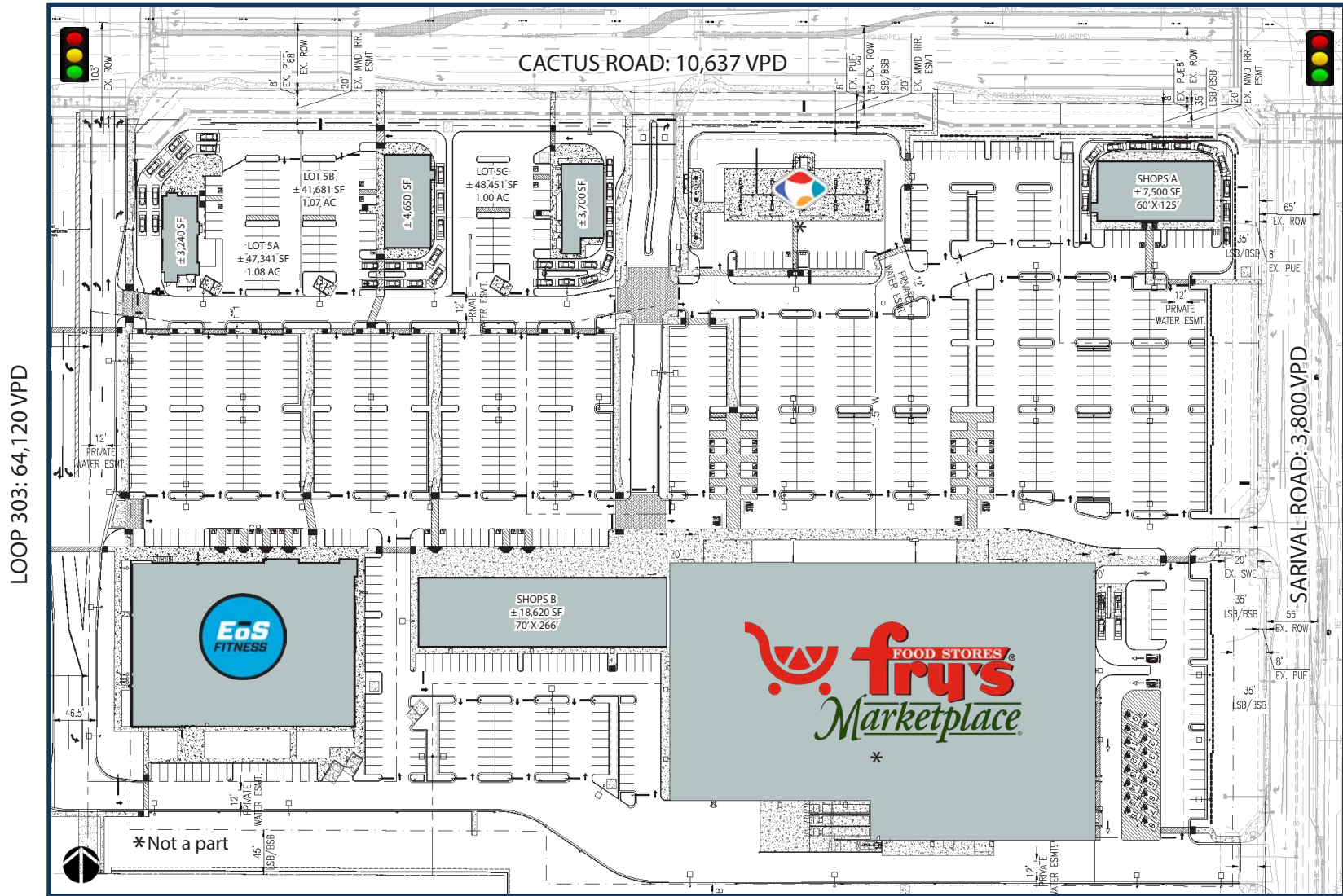
### Matthew Archer

Leasing Associate  
602.224.4160 Direct  
602.908.8680 Cell  
[marcher@barclaygroup.com](mailto:marcher@barclaygroup.com)

# LOOP 303 & CACTUS RD | SITE PLAN

**ACRES:**  
±20.00

**SQUARE FEET:**  
±208,256



**SHOPS AND PADS AVAILABLE**



**BARCLAY**  
GROUP

2415 E Camelback Rd, Suite 900  
Phoenix, Arizona, 85016  
www.BarclayGroup.com

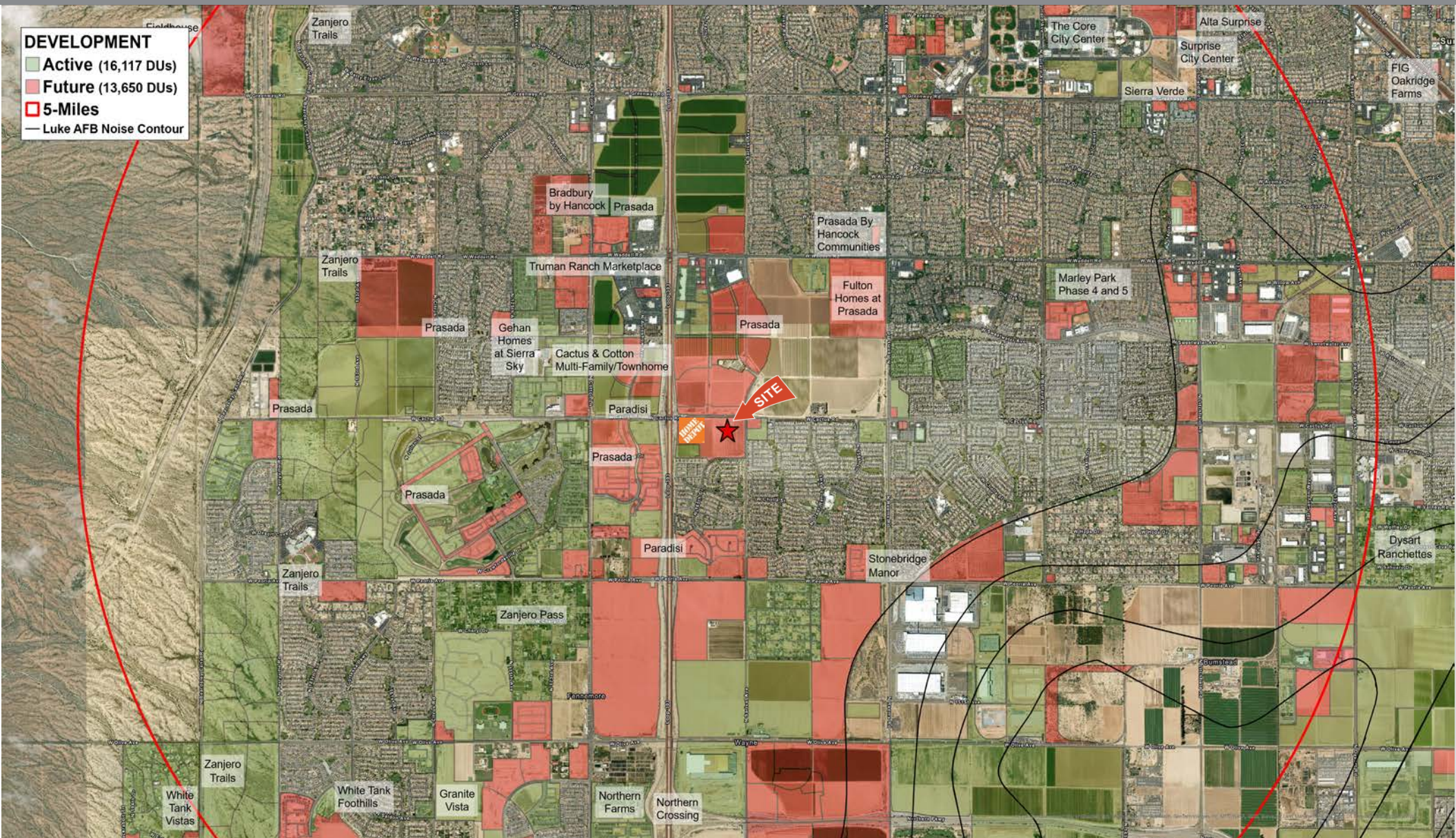
**Brett Sheets**  
Senior Vice President Leasing  
602.224.4147 Direct  
602.908.8837 Cell  
bsheets@barclaygroup.com

**Kristin Walrod**  
Senior Leasing Manager  
602.224.4171 Direct  
480.521.4822 Cell  
kwalrod@barclaygroup.com

**Matthew Archer**  
Leasing Associate  
602.224.4160 Direct  
602.908.8680 Cell  
marcher@barclaygroup.com



# LOOP 303 & CACTUS RD | TRADE AREA



**BARCLAY**  
GROUP

2415 E Camelback Rd, Suite 900  
Phoenix, Arizona, 85016  
[www.BarclayGroup.com](http://www.BarclayGroup.com)

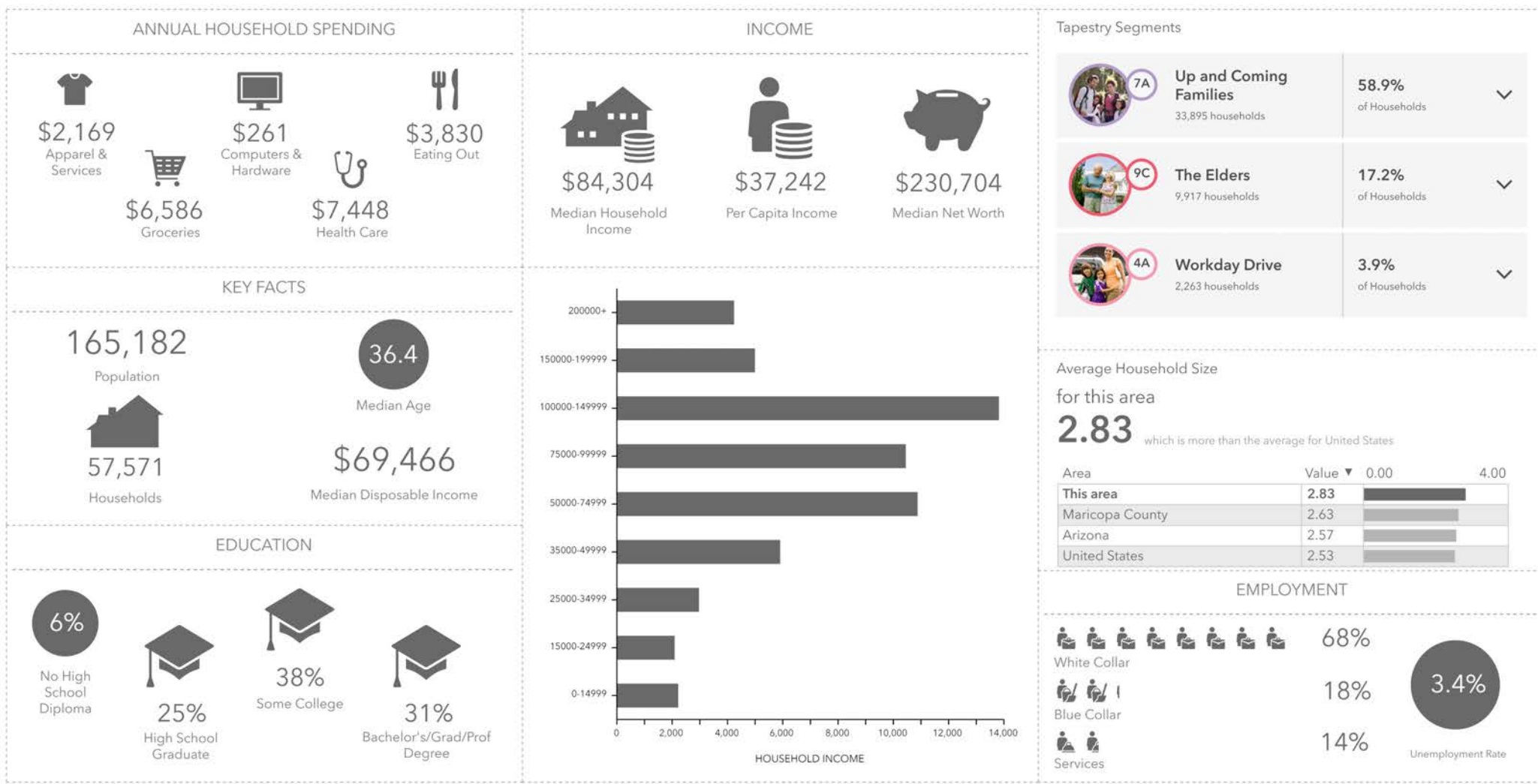
**Brett Sheets**  
Senior Vice President Leasing  
602.224.4147 Direct  
602.908.8837 Cell  
[bsheets@barclaygroup.com](mailto:bsheets@barclaygroup.com)

**Kristin Walrod**  
Senior Leasing Manager  
602.224.4171 Direct  
480.521.4822 Cell  
[kwalrod@barclaygroup.com](mailto:kwalrod@barclaygroup.com)

**Matthew Archer**  
Leasing Associate  
602.224.4160 Direct  
602.908.8680 Cell  
[marcher@barclaygroup.com](mailto:marcher@barclaygroup.com)



# LOOP 303 & CACTUS RD | 5 MILE DEMOGRAPHICS



Source: Esri Business Analyst

**BARCLAY GROUP**  
2415 E Camelback Rd, Suite 900  
Phoenix, Arizona, 85016  
www.BarclayGroup.com

**Brett Sheets**  
Senior Vice President Leasing  
602.224.4147 Direct  
602.908.8837 Cell  
bsheets@barclaygroup.com

**Kristin Walrod**  
Senior Leasing Manager  
602.224.4171 Direct  
480.521.4822 Cell  
kwalrod@barclaygroup.com

**Matthew Archer**  
Leasing Associate  
602.224.4160 Direct  
602.908.8680 Cell  
marcher@barclaygroup.com

The information presented was obtained from sources deemed reliable; however, Barclay Group makes no warranty or representation, expressed or implied, as to the accuracy of the information contained herein, and the same is submitted to errors, omissions, change of price, rental or conditions, withdrawal without notice, and to any special listing conditions imposed by our principals.