

Pineda Commons | Melbourne, FL



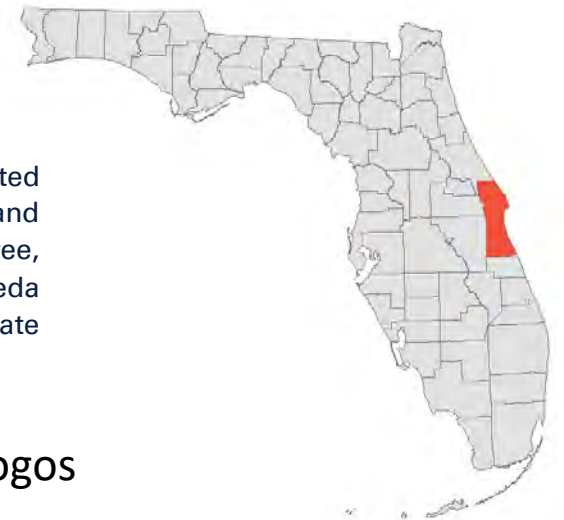
Retail Shop Space & Outparcels Available

LOCATION: SEC of Business Center Boulevard and Wickham Road, Melbourne, FL

SUMMARY: Pineda Commons will be a Sprouts & EOS Fitness anchored neighborhood center located in the City of Melbourne, Brevard County, Florida on the SEC of Business Center Boulevard and Wickham Road, a major north/south artery. The site is across from Home Depot, Goodwill, Dollar Tree, Racetrac, retail specialty shops, and restaurants. The property is located a half mile South of the Pineda Causeway connection to both US # 1 and the beach. Pineda Causeway Extension connects to Interstate 95 and was completed in May 2011.

Project Size: 17.78 acres
Grocery, Fitness, 3 out-parcels, 7,000 Sf of shop space

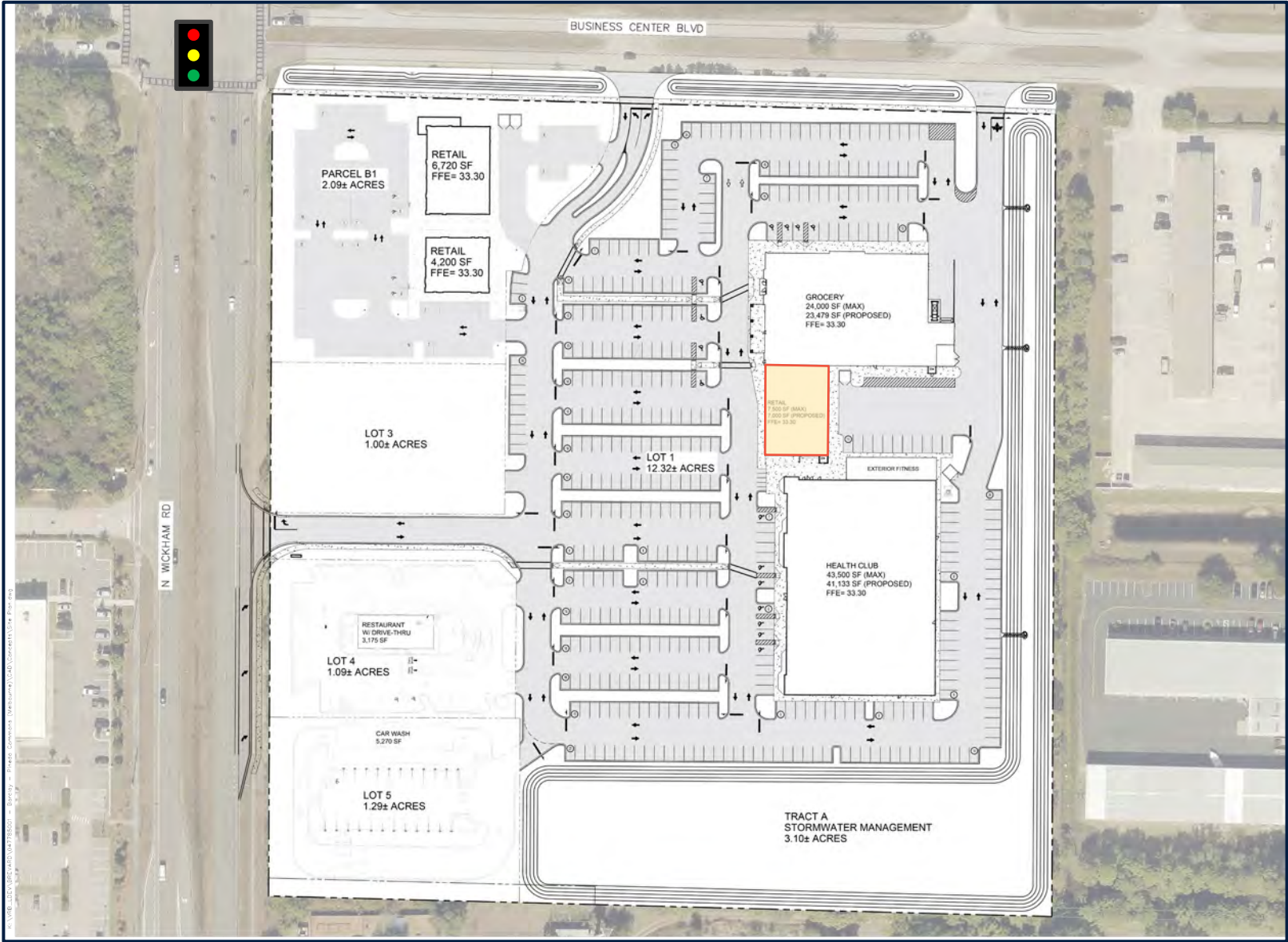
Add existing OP logos



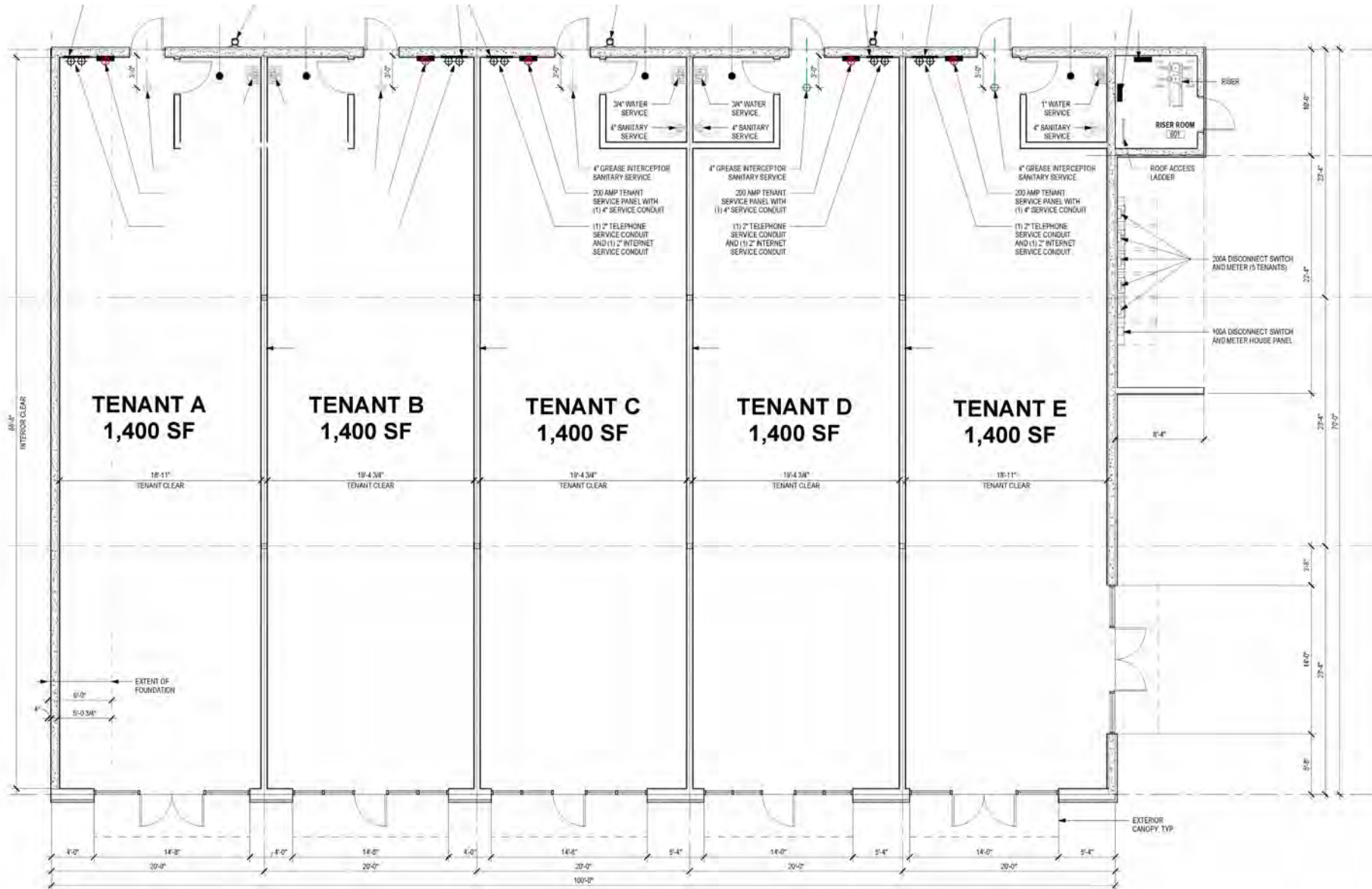
1211 N. Westshore Blvd. Suite 801
Tampa, Florida 33607
www.barclaygroup.com

Loren Coia
Leasing
727-733-8417 Direct
Lcoia@barclaygroup.com

Pineda Commons | Site Plan



Pineda Commons | Shop Space



Pineda Commons | Elevations



MATERIAL FINISHES

- | | | | |
|--|---|--|---|
| | 1 STONE VENEER
OLD WORLD LEGGE
BY CORONADO IN
THE COLOR HURON | | 8 SILL 900 SERIES
BY CORONADO IN
THE COLOR GREY |
| | 2 NICHINA
VINTAGEWOOD
CEDAR | | 9 SUBRELLA OR SIMILAR
FABRIC FINISH, COLOR
TO MATCH PPG 1005-7
(DARK GRANITE) |
| | 3 PARAPET COPING, COLOR
TO MATCH PPG 1005-7
(DARK GRANITE) | | 10 KAWNEER ALUMINUM
STOREFRONT SYSTEM
#40 DARK BRONZE |
| | 4 STUCCO, COLOR TO
MATCH PPG 0006-3
(STATUE GARDEN) | | 11 HIZ DOORS & FRAMES
PAINTED TO MATCH
ADJACENT MATERIAL |
| | 5 STUCCO, COLOR
TO MATCH PPG 0006-1
(SHWING SCALE) | | 12 WALL MOUNTED LIGHT
PICTURE |
| | 6 STUCCO, COLOR
TO MATCH PPG 0905-5
(STEAMSHIP) | | 13 STUCCO CHANNEL |
| | 7 CMU SPLITFACE, COLOR
TO MATCH PPG 0905-3
(STATUE GARDEN) | | 14 PRECAST CONCRETE CURB |

Pineda Commons | Surrounding Area



Demographics | 3 Miles

