

# FRY'S FOOD - SEC ELLSWORTH & BROADWAY RD | MESA, AZ



**ACRES:**

±0.73

**SQUARE FEET:**

±32,016

**ZONING:**

C-2

**ADDRESS:**

401 S ELLSWORTH ROAD, MESA AZ 85208

**SUMMARY:**

This Fry's anchored neighborhood center is located in the city of Mesa, AZ. The surrounding trade area boasts a population of over 225,000 residents and over 200,000 workers with an average annual household income nearly \$80,000. Nearly 45,000 vehicles per day pass through the intersection of Ellsworth Road and Broadway Road.



2415 E Camelback Rd, Suite 900  
Phoenix, Arizona, 85016  
[www.BarclayGroup.com](http://www.BarclayGroup.com)

**Brett Sheets**

Senior Vice President Leasing  
602.224.4147 Direct  
480.596.9399 Office  
[bsheets@barclaygroup.com](mailto:bsheets@barclaygroup.com)

# OVERVIEW - SEC ELLSWORTH & BROADWAY RD | MESA, AZ

## TRAFFIC COUNTS

**Broadway Road:** ± 18,300 VPD  
**Ellsworth Road:** ± 25,000 VPD  
**Total Traffic:** ± 43,300 VPD

## DEMOGRAPHICS

### Average Household Income

1 Mile	3 Miles	5 Miles
\$56,890	\$75,696	\$79,593

### Total Population

1 Mile	3 Miles	5 Miles
16,433	104,345	228,368

### Daytime Population

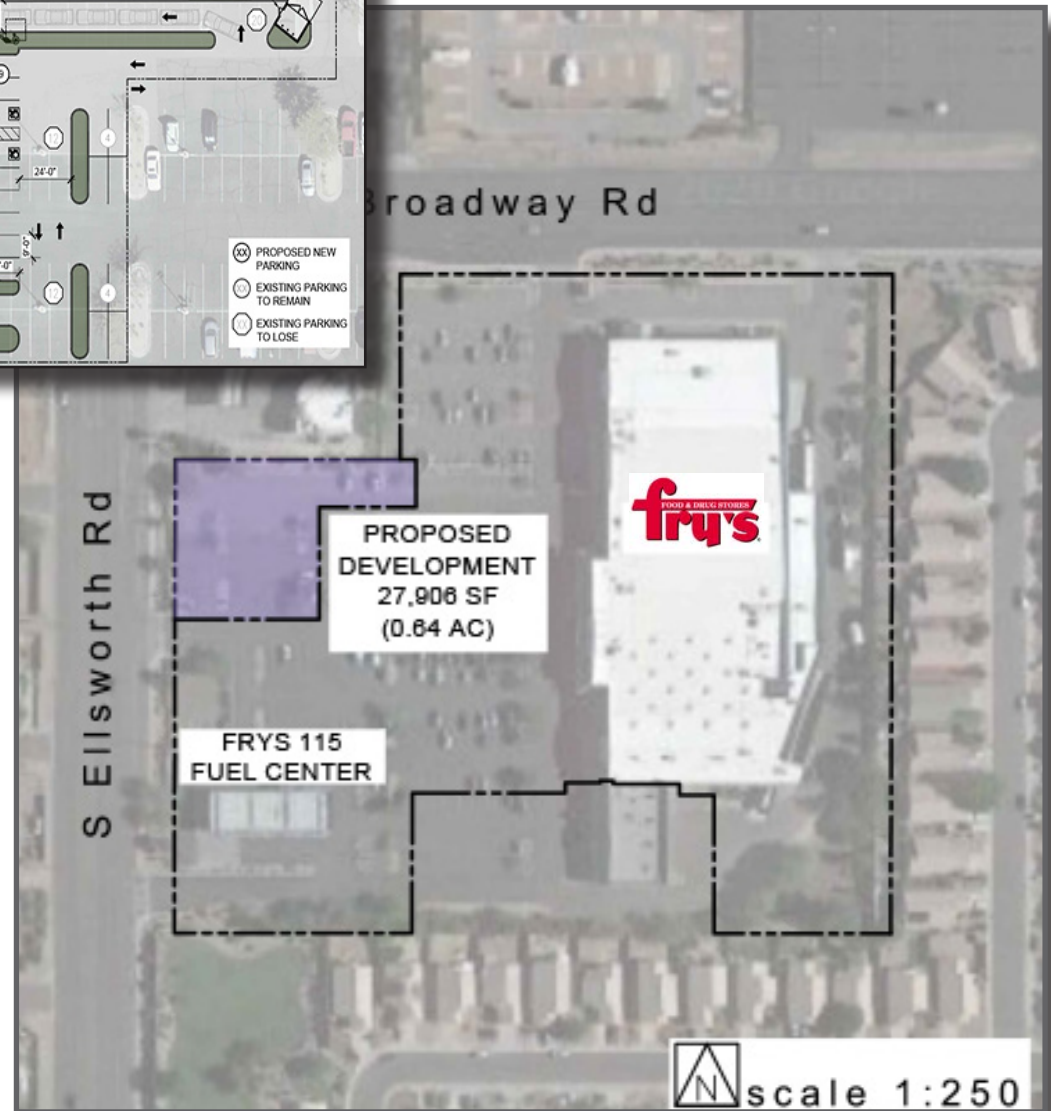
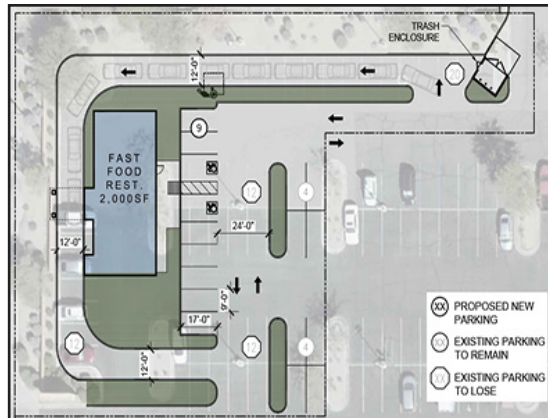
1 Mile	3 Miles	5 Miles
13,264	90,261	207,820

### Total Households

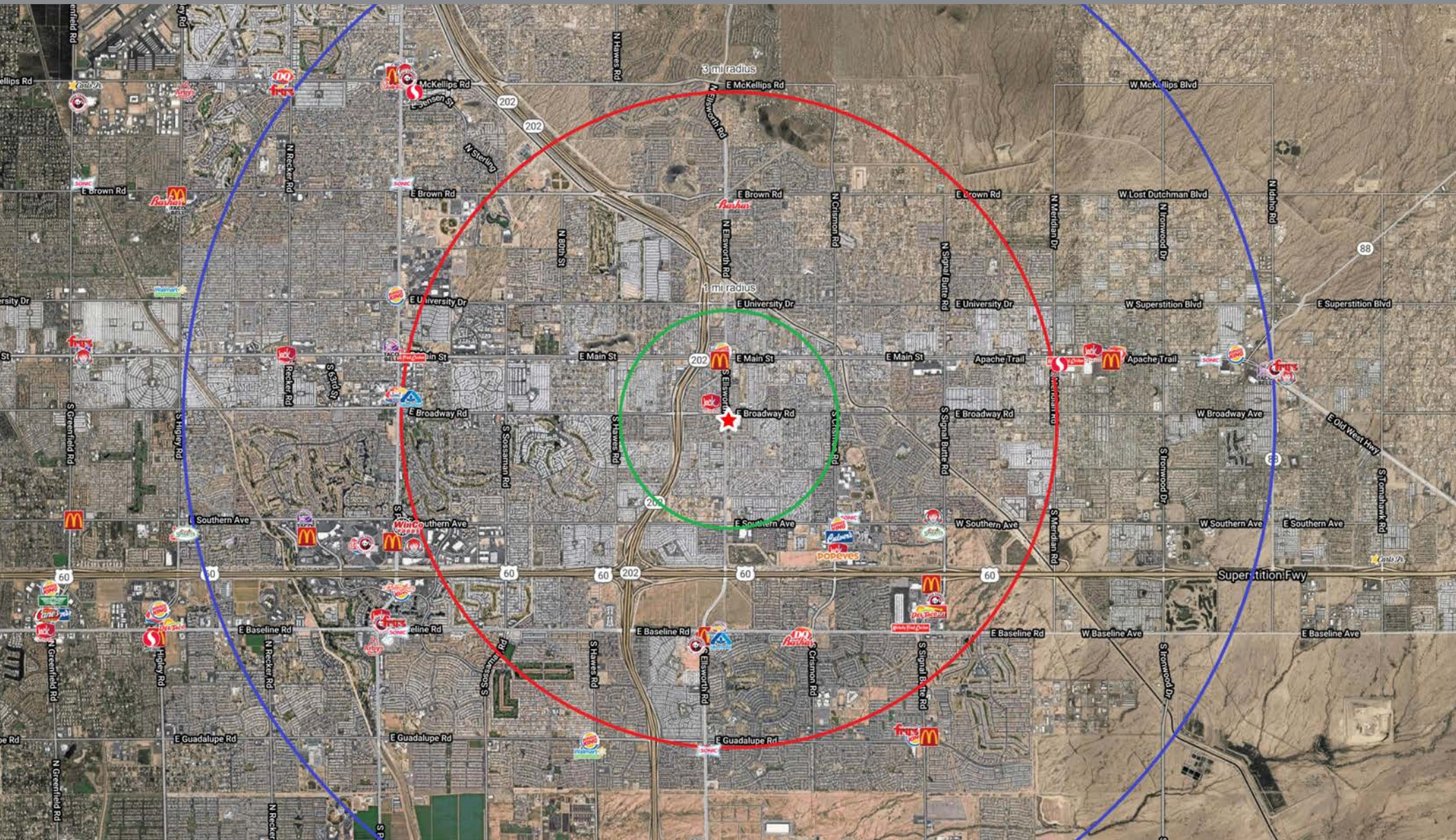
1 Mile	3 Miles	5 Miles
7,000	41,497	90,880

## AVAILABLE

- PAD ± 27,906 SF, 0.64 AC



# FRY'S FOOD - SEC ELLSWORTH & BROADWAY RD | MESA, AZ



2390 E Camelback Rd, Suite 200  
Phoenix, Arizona, 85016  
[www.BarclayGroup.com](http://www.BarclayGroup.com)

**Brett Sheets**  
Senior Vice President Leasing  
602.224.4147 Direct  
480.596.9399 Office  
[bsheets@barclaygroup.com](mailto:bsheets@barclaygroup.com)

# DEMOGRAPHICS (3 MILES) - SEC ELLSWORTH & BROADWAY RD | MESA, AZ

## ANNUAL HOUSEHOLD SPENDING



## INCOME



## Households By Income

The largest group: \$50,000 - \$74,999 (21.1%)  
The smallest group: \$200,000+ (4.0%)

Indicator	Value	Difference
<\$15,000	7.8%	+0.4%
\$15,000 - \$24,999	9.7%	+1.8%
\$25,000 - \$34,999	9.9%	+1.5%
\$35,000 - \$49,999	14.3%	+1.8%
\$50,000 - \$74,999	21.1%	+2.6%
\$75,000 - \$99,999	13.2%	-0.7%
\$100,000 - \$149,999	15.6%	-0.9%
\$150,000 - \$199,999	4.5%	-2.6%
\$200,000+	4.0%	-3.9%

Bars show deviation from Maricopa County

## KEY FACTS

104,345

Population

43.6

Median Age

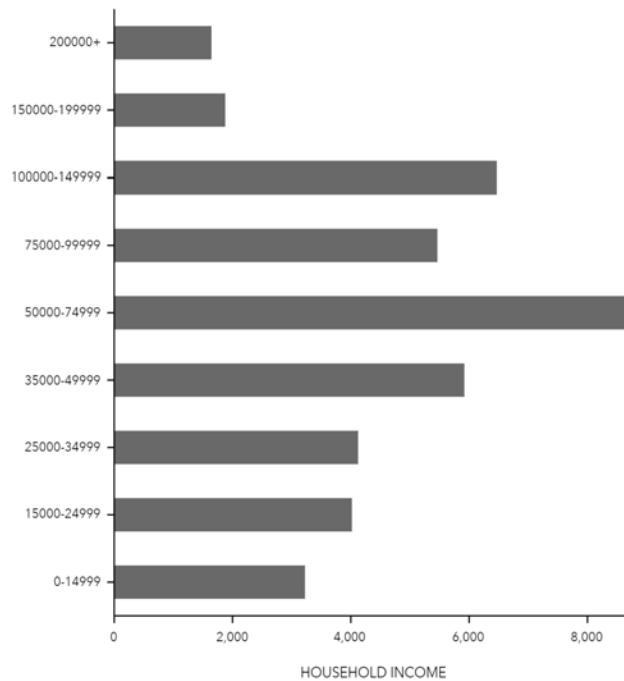


41,497

Households

\$48,891

Median Disposable Income



## Average Household Size

for this area

**2.50**

which is less than the average for United States

Area	Value	0.00	4.00
Maricopa County	2.69		
Arizona	2.64		
United States	2.58		
This area	2.50		

## EDUCATION

10%

No High School Diploma



29%

High School Graduate



37%

Some College



24%

Bachelor's/Grad/Prof Degree

## EMPLOYMENT

64%

21%

15%

11.6%

Unemployment Rate