

# GLADDEN FARMS | NEC OF TANGERINE RD & LON ADAMS RD | MARANA, AZ

Projected Opening Q3 2024



## ADDRESS:

NEC OF N Tangerine RD & N Lon Adams RD, Marana, AZ

## SUMMARY:

This grocery anchored neighborhood center is in the heart of the Gladden Farms subdivision located in the rapidly growing Tucson suburb of Marana, AZ. Situated on the corner of Lon Adams Rd and Tangerine Rd. just off Interstate 10 this area boasts an average daily traffic count of nearly 88,000 VPD. The center's seven mile trade area contains a population of nearly 40,000 with an average household income of over \$100,000 per year.



**BARCLAY**  
GROUP

2415 E Camelback Rd, Suite 900  
Phoenix, Arizona, 85016  
[www.BarclayGroup.com](http://www.BarclayGroup.com)

### Brett Sheets

Senior Vice President Leasing  
602.224.4147 Direct  
602.908.8837 Cell  
[bsheets@barclaygroup.com](mailto:bsheets@barclaygroup.com)

### Kristin Walrod

Senior Leasing Manager  
602.224.4171 Direct  
480.521.4822 Cell  
[kwalrod@barclaygroup.com](mailto:kwalrod@barclaygroup.com)

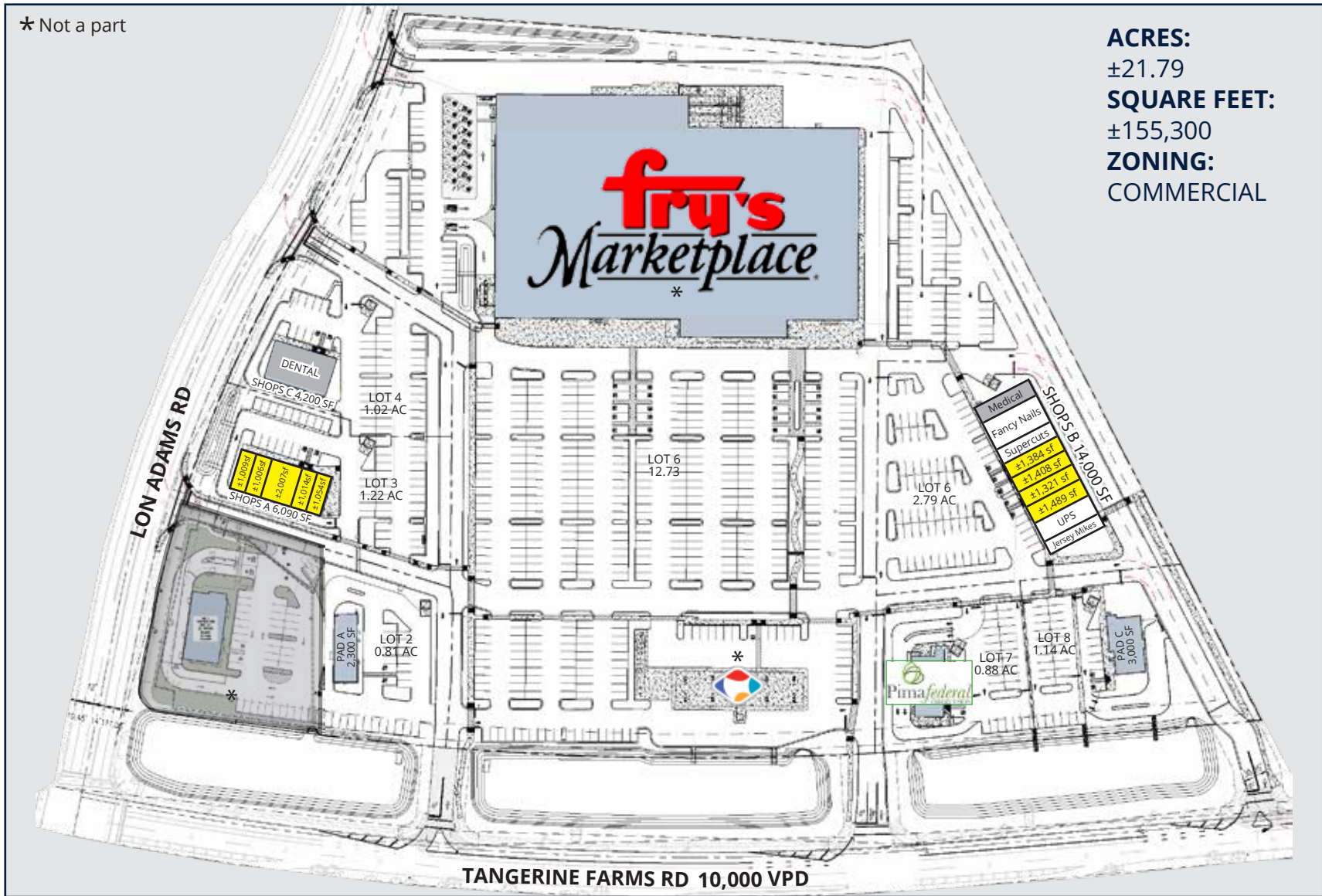
### Matthew Archer

Leasing Associate  
602.224.4160 Direct  
602.908.8680 Cell  
[marcher@barclaygroup.com](mailto:marcher@barclaygroup.com)

# GLADDEN FARMS | SITE

\* Not a part

**ACRES:**  
±21.79  
**SQUARE FEET:**  
±155,300  
**ZONING:**  
COMMERCIAL



	SIGNED LEASE
	AT LOI/LEASE
	AVAILABLE



**BARCLAY**  
GROUP

2415 E Camelback Rd, Suite 900  
Phoenix, Arizona, 85016  
www.BarclayGroup.com

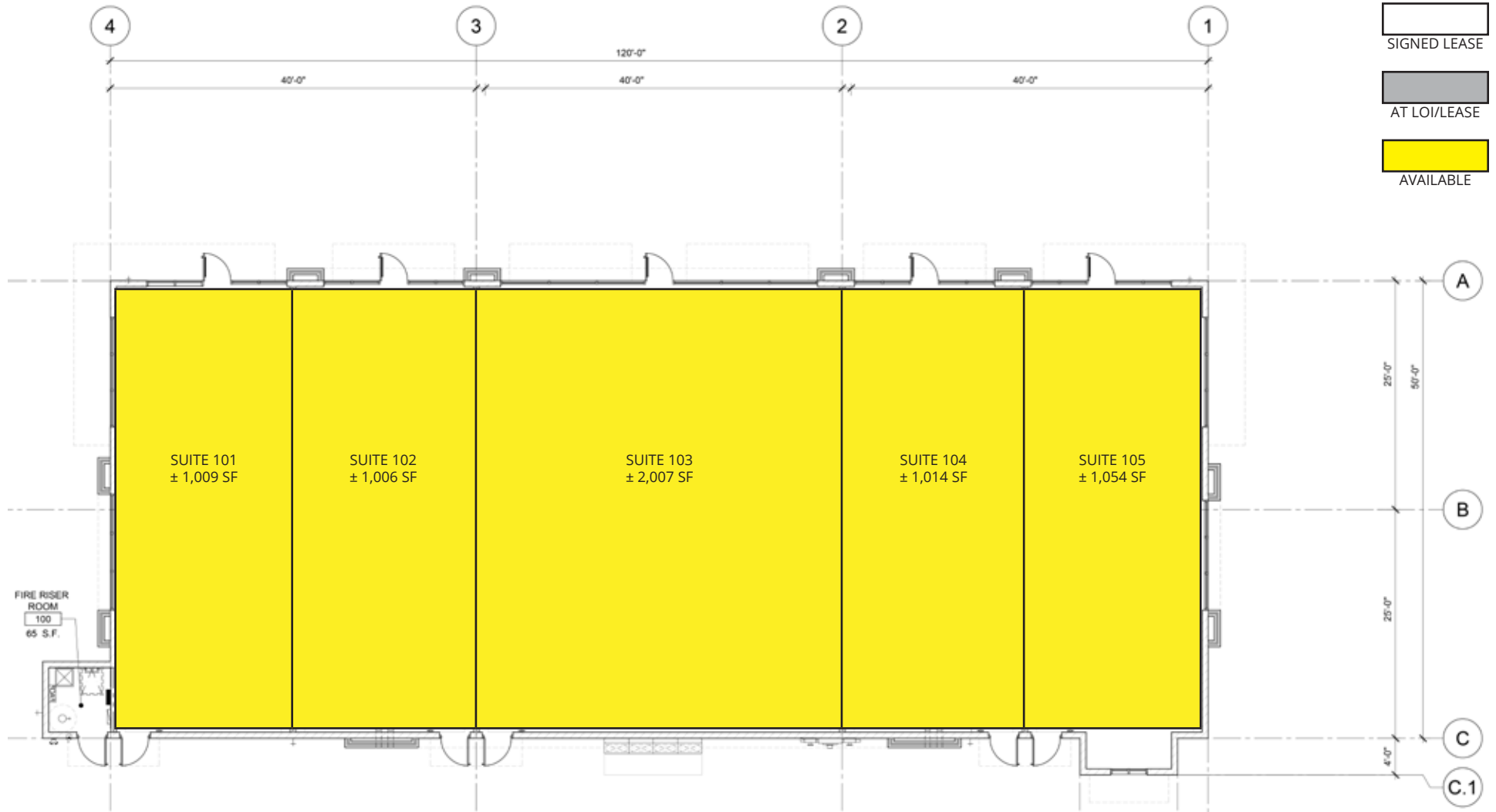
**Brett Sheets**  
Senior Vice President Leasing  
602.224.4147 Direct  
602.908.8837 Cell  
bsheets@barclaygroup.com

**Kristin Walrod**  
Senior Leasing Manager  
602.224.4171 Direct  
480.521.4822 Cell  
kwalrod@barclaygroup.com

**Matthew Archer**  
Leasing Associate  
602.224.4160 Direct  
602.908.8680 Cell  
marcher@barclaygroup.com

The information presented was obtained from sources deemed reliable; however, Barclay Group makes no warranty or representation, expressed or implied, as to the accuracy of the information contained herein, and the same is submitted to errors, omissions, change of price, rental or conditions, withdrawal without notice, and to any special listing conditions imposed by our principals.

# GLADDEN FARMS | SHOPS A



**BARCLAY**  
GROUP

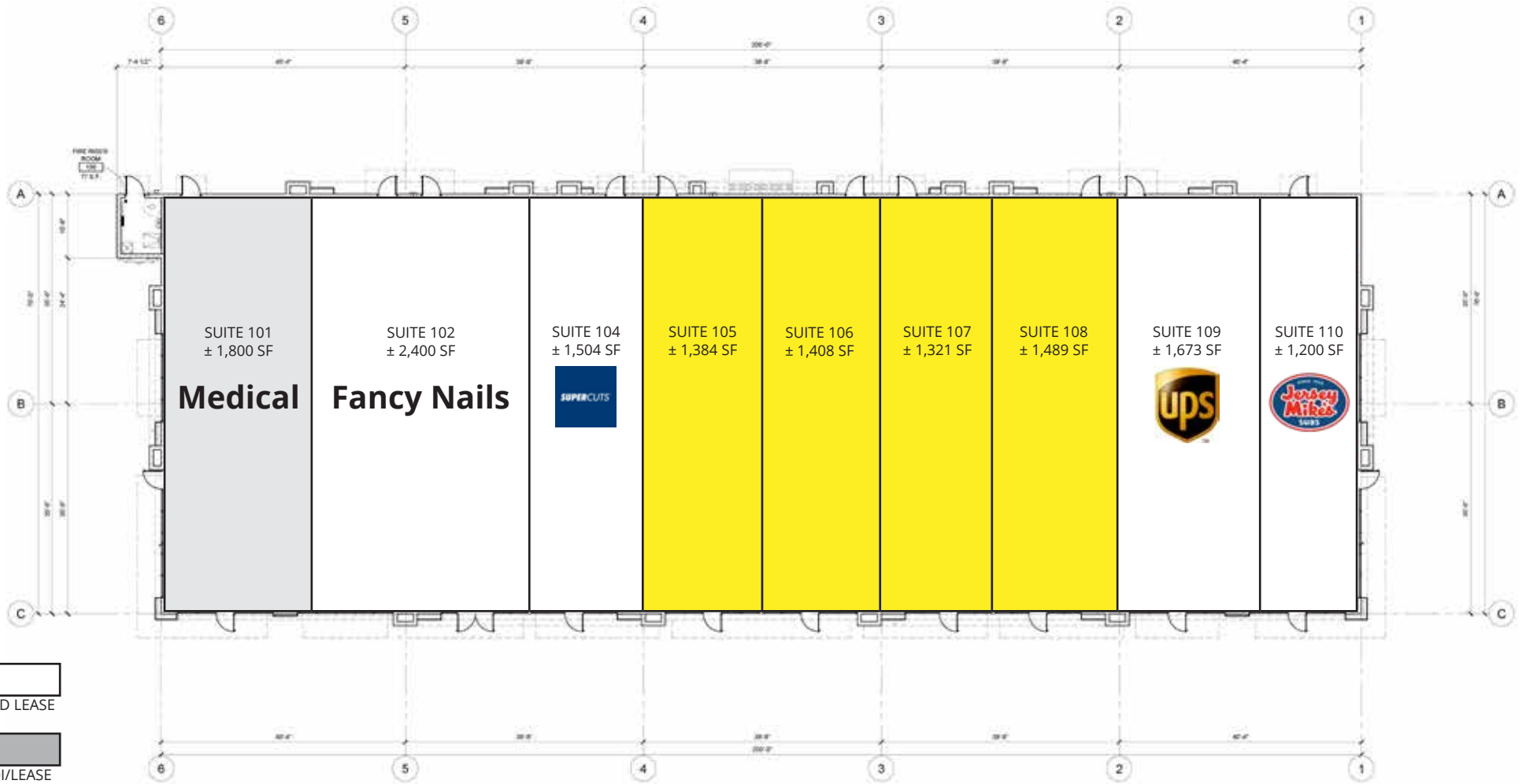
2415 E Camelback Rd, Suite 900  
Phoenix, Arizona, 85016  
[www.BarclayGroup.com](http://www.BarclayGroup.com)

**Brett Sheets**  
Senior Vice President Leasing  
602.224.4147 Direct  
602.908.8837 Cell  
[bsheets@barclaygroup.com](mailto:bsheets@barclaygroup.com)

**Kristin Walrod**  
Senior Leasing Manager  
602.224.4171 Direct  
480.521.4822 Cell  
[kwalrod@barclaygroup.com](mailto:kwalrod@barclaygroup.com)

**Matthew Archer**  
Leasing Associate  
602.224.4160 Direct  
602.908.8680 Cell  
[marcher@barclaygroup.com](mailto:marcher@barclaygroup.com)

# GLADDEN FARMS | SHOPS B



-  SIGNED LEASE
-  AT LOI/LEASE
-  AVAILABLE



**BARCLAY**  
GROUP

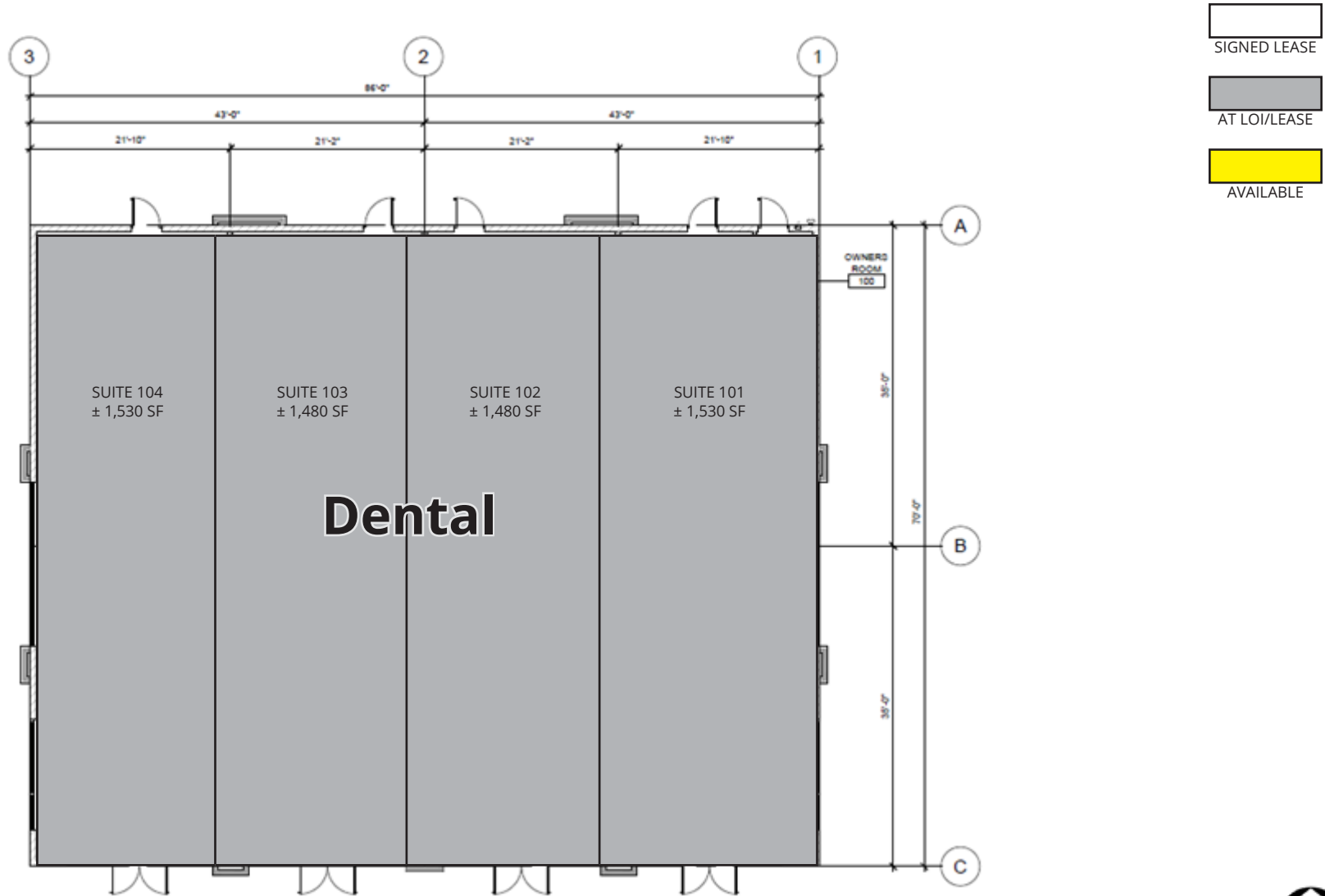
2415 E Camelback Rd, Suite 900  
Phoenix, Arizona, 85016  
[www.BarclayGroup.com](http://www.BarclayGroup.com)

**Brett Sheets**  
Senior Vice President Leasing  
602.224.4147 Direct  
602.908.8837 Cell  
[bsheets@barclaygroup.com](mailto:bsheets@barclaygroup.com)

**Kristin Walrod**  
Senior Leasing Manager  
602.224.4171 Direct  
480.521.4822 Cell  
[kwalrod@barclaygroup.com](mailto:kwalrod@barclaygroup.com)

**Matthew Archer**  
Leasing Associate  
602.224.4160 Direct  
602.908.8680 Cell  
[marcher@barclaygroup.com](mailto:marcher@barclaygroup.com)

# GLADDEN FARMS | SHOPS C



**BARCLAY**  
GROUP

2415 E Camelback Rd, Suite 900  
Phoenix, Arizona, 85016  
www.BarclayGroup.com

**Brett Sheets**  
Senior Vice President Leasing  
602.224.4147 Direct  
602.908.8837 Cell  
bsheets@barclaygroup.com

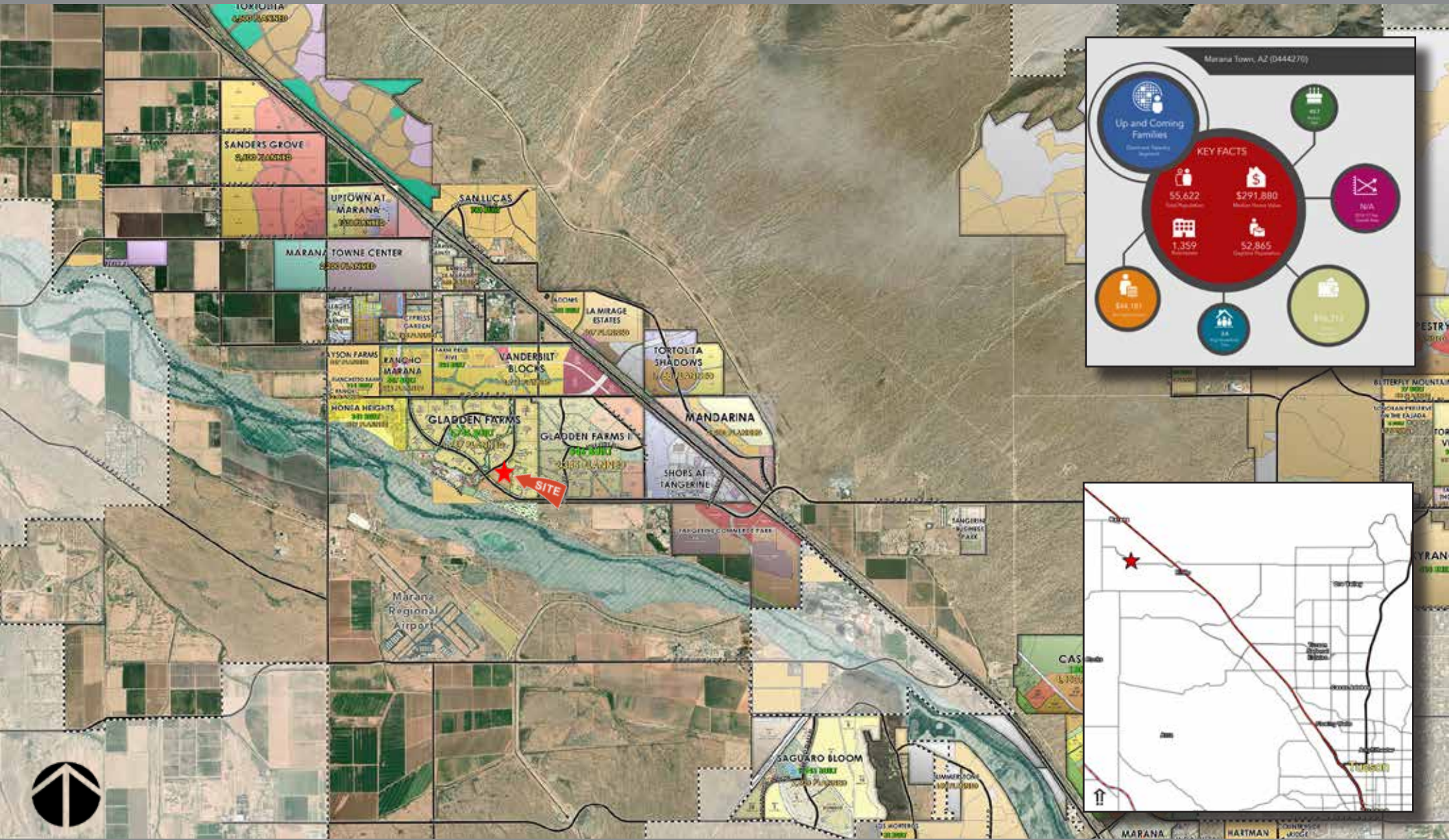
**Kristin Walrod**  
Senior Leasing Manager  
602.224.4171 Direct  
480.521.4822 Cell  
kwalrod@barclaygroup.com

**Matthew Archer**  
Leasing Associate  
602.224.4160 Direct  
602.908.8680 Cell  
marcher@barclaygroup.com





# GLADDEN FARMS | MAPS & DEMOS



**BARCLAY**  
GROUP

2415 E Camelback Rd, Suite 900  
Phoenix, Arizona, 85016  
www.BarclayGroup.com

**Brett Sheets**  
Senior Vice President Leasing  
602.224.4147 Direct  
602.908.8837 Cell  
bsheets@barclaygroup.com

**Kristin Walrod**  
Senior Leasing Manager  
602.224.4171 Direct  
480.521.4822 Cell  
kwalrod@barclaygroup.com

**Matthew Archer**  
Leasing Associate  
602.224.4160 Direct  
602.908.8680 Cell  
marcher@barclaygroup.com