

# GLADDEN FARMS | NEC OF TANGERINE RD & LON ADAMS RD | MARANA, AZ

## Projected Opening Q3 2024



**ACRES:**  
±21.79

**SQUARE FEET:**  
±155,300

**ZONING:**  
COMMERCIAL

**ADDRESS:**  
NEC OF N TANGERINE RD & N LON ADAMS RD, MARANA, AZ

**SUMMARY:**  
This grocery anchored neighborhood center is in the heart of the Gladden Farms subdivision located in the rapidly growing Tucson suburb of Marana, AZ. Situated on the corner of Lon Adams Rd and Tangerine Rd. just off Interstate 10 this area boasts an average daily traffic count of nearly 88,000 VPD. The center's seven mile trade area contains a population of nearly 40,000 with an average household income of over \$100,000 per year.



2415 E Camelback Rd, Suite 900  
Phoenix, Arizona, 85016  
[www.BarclayGroup.com](http://www.BarclayGroup.com)

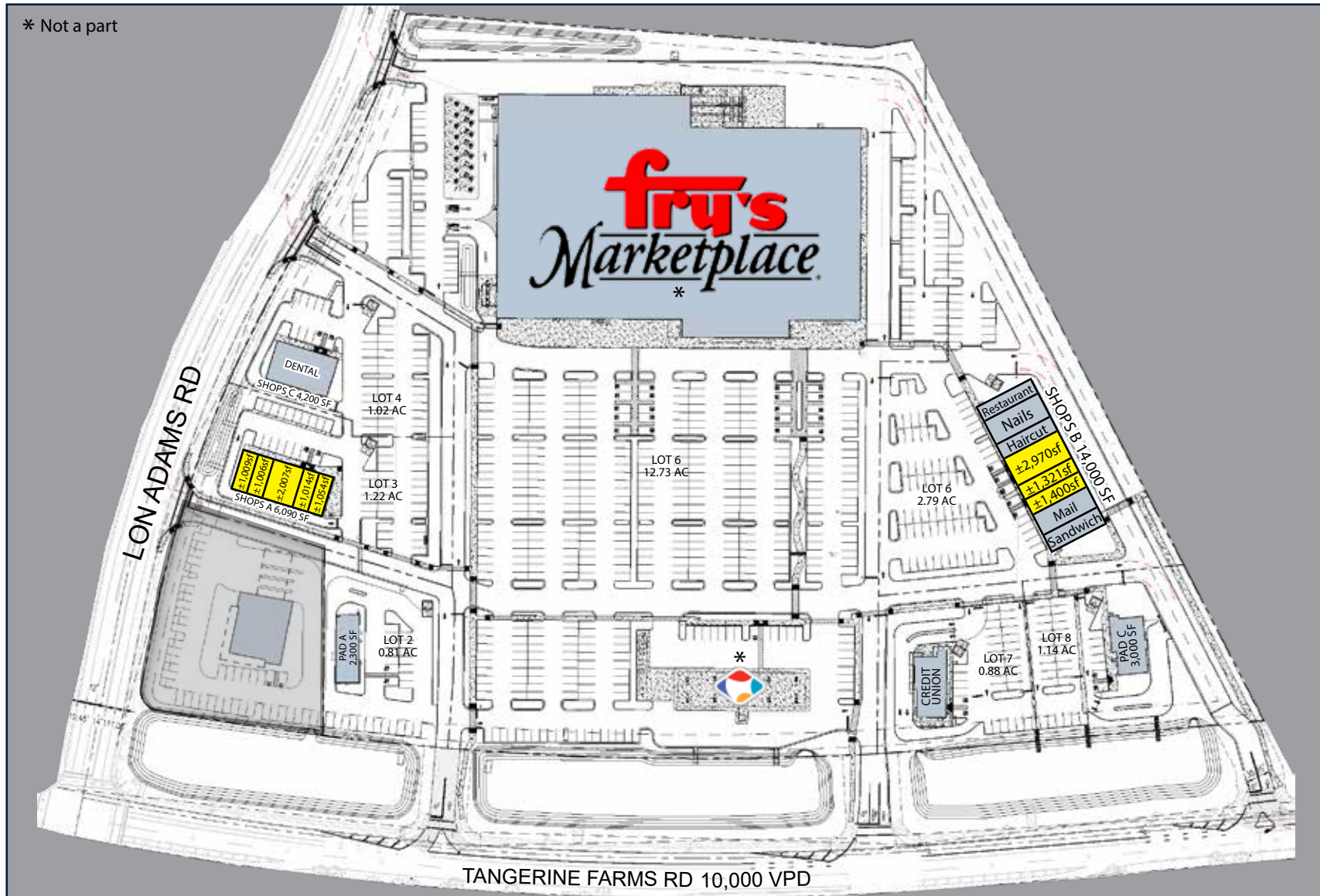
**Brett Sheets**  
*Senior Vice President Leasing*  
602.224.4147 Direct  
602.908.8837 Cell  
[bsheets@barclaygroup.com](mailto:bsheets@barclaygroup.com)

**Kristin Walrod**  
*Senior Leasing Manager*  
602.224.4171 Direct  
480.521.4822 Cell  
[kwalrod@barclaygroup.com](mailto:kwalrod@barclaygroup.com)

**Matthew Archer**  
*Leasing Associate*  
602.224.4160 Direct  
602.908.8680 Cell  
[marcher@barclaygroup.com](mailto:marcher@barclaygroup.com)

# GLADDEN FARMS | SITE

\* Not a part



**BARCLAY**  
GROUP

2415 E Camelback Rd, Suite 900  
Phoenix, Arizona, 85016  
[www.BarclayGroup.com](http://www.BarclayGroup.com)

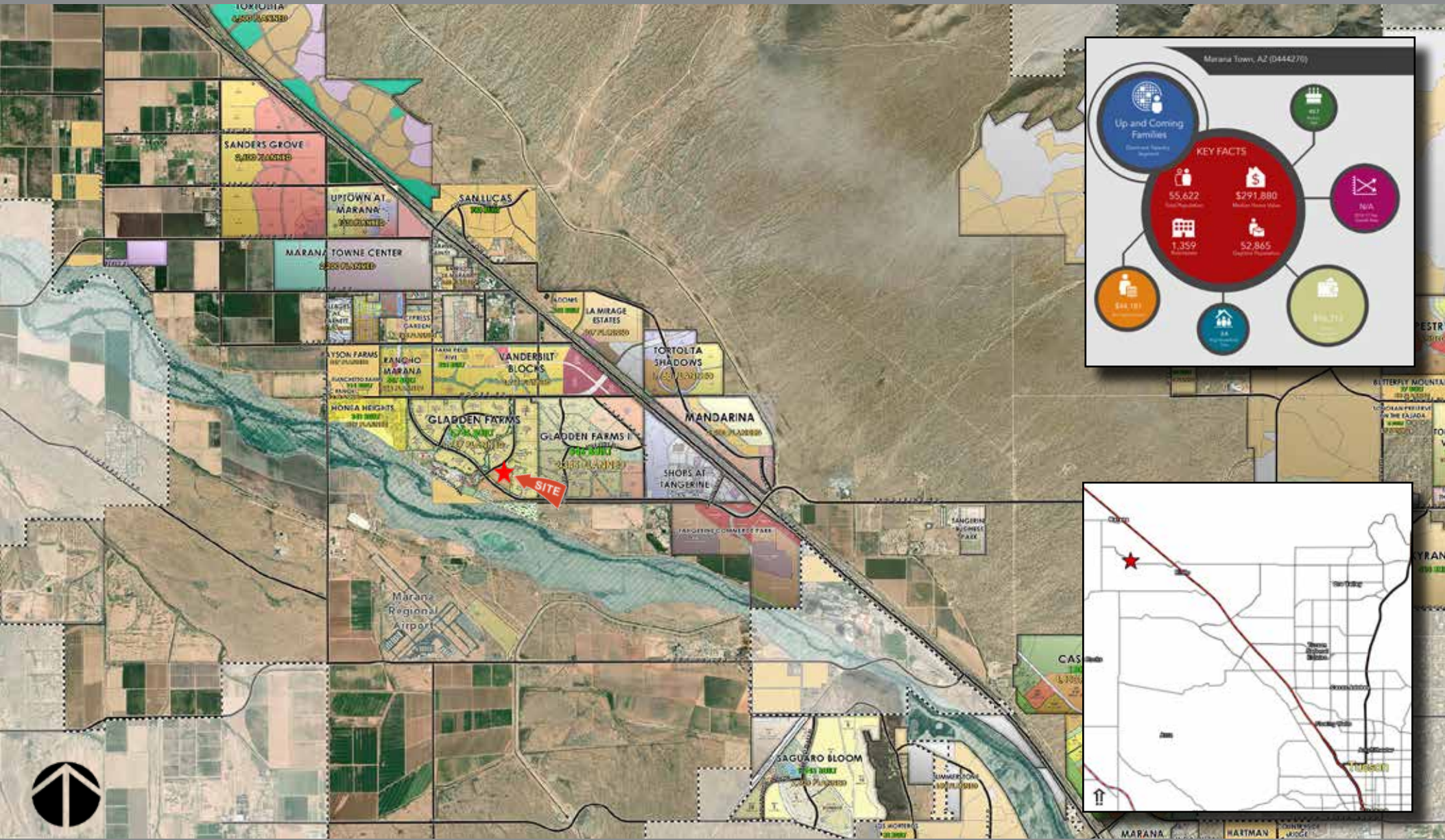
**Brett Sheets**  
Senior Vice President Leasing  
602.224.4147 Direct  
602.908.8837 Cell  
[bsheets@barclaygroup.com](mailto:bsheets@barclaygroup.com)

**Kristin Walrod**  
Senior Leasing Manager  
602.224.4171 Direct  
480.521.4822 Cell  
[kwalrod@barclaygroup.com](mailto:kwalrod@barclaygroup.com)

**Matthew Archer**  
Leasing Associate  
602.224.4160 Direct  
602.908.8680 Cell  
[marcher@barclaygroup.com](mailto:marcher@barclaygroup.com)



## GLADDEN FARMS | MAPS & DEMOS



BARCLAY  
GROUP

2415 E Camelback Rd, Suite 900  
Phoenix, Arizona, 85016  
[www.BarclayGroup.com](http://www.BarclayGroup.com)

**Brett Sheets**  
*Senior Vice President Leasing*  
602.224.4147 Direct  
602.908.8837 Cell  
bsheets@barclaygroup.com

**Kristin Walrod**  
Senior Leasing Manager  
602.224.4171 Direct  
480.521.4822 Cell  
kwalrod@barclaygroup.com

**Matthew Archer**  
Leasing Associate  
602.224.4160 Direct  
602.908.8680 Cell  
marcher@barclaygroup.com