

GLADDEN FARMS | NEC OF TANGERINE RD & LON ADAMS RD | MARANA, AZ

Projected Opening Q3 2024



ACRES:
±21.79

SQUARE FEET:
±155,300

ZONING:
COMMERCIAL

ADDRESS:
NEC OF N TANGERINE RD & N LON ADAMS RD, MARANA, AZ

SUMMARY:
This grocery anchored neighborhood center is in the heart of the Gladden Farms subdivision located in the rapidly growing Tucson suburb of Marana, AZ. Situated on the corner of Lon Adams Rd and Tangerine Rd. just off Interstate 10 this area boasts an average daily traffic count of nearly 88,000 VPD. The center's seven mile trade area contains a population of nearly 40,000 with an average household income of over \$100,000 per year.



2415 E Camelback Rd, Suite 900
Phoenix, Arizona, 85016
www.BarclayGroup.com

Brett Sheets
Senior Vice President
Leasing
602.224.4147 Direct
480.596.9399 Office
bsheets@barclaygroup.com

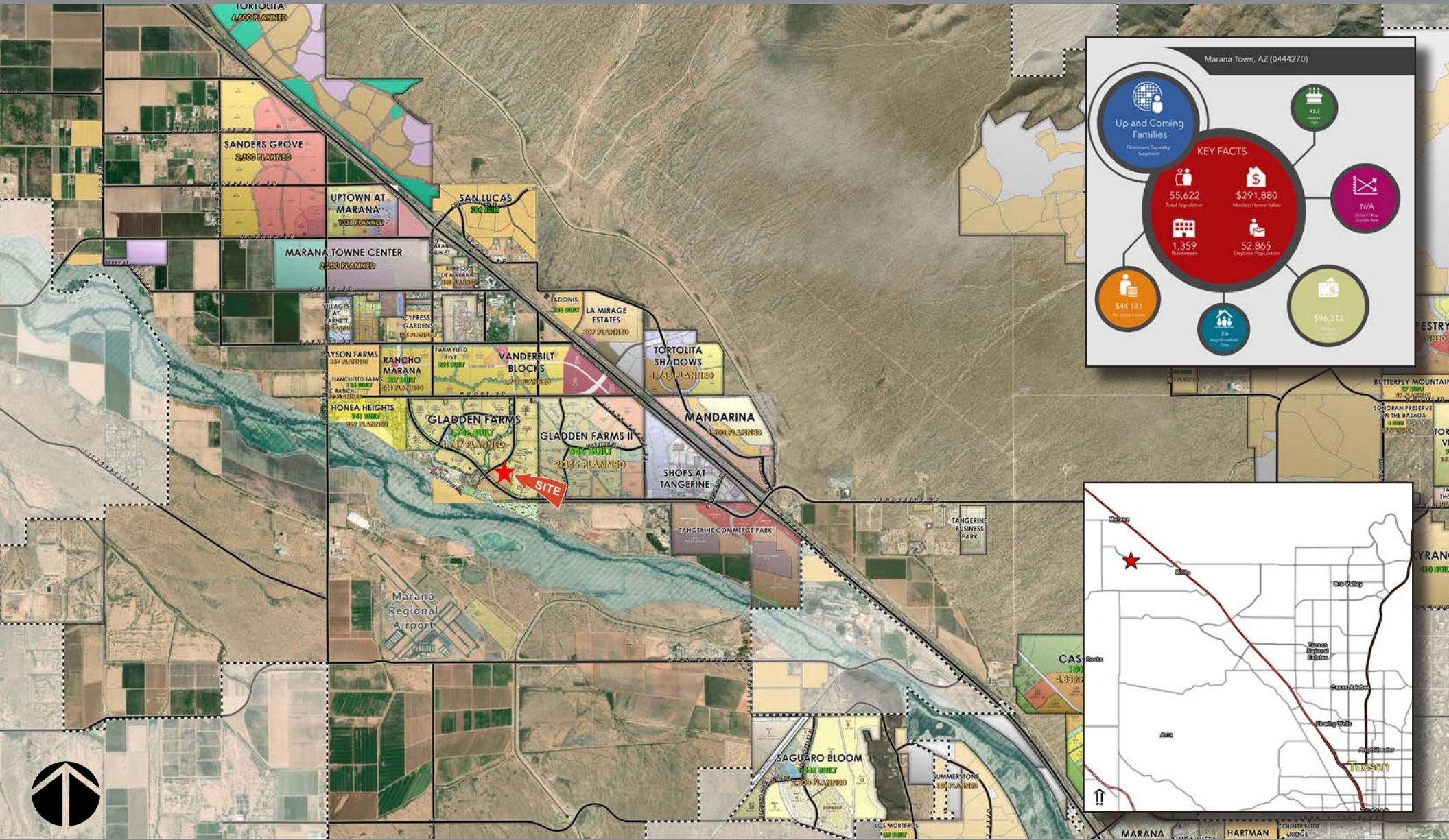
GLADDEN FARMS | SITE



2415 E Camelback Rd, Suite 900
Phoenix, Arizona, 85016
www.BarclayGroup.com

Brett Sheets
Senior Vice President
Leasing
602.224.4147 Direct
480.596.9399 Office
bsheets@barclaygroup.com

GLADDEN FARMS | MAPS & DEMOS



2415 E Camelback Rd, Suite 900
 Phoenix, Arizona, 85016
www.BarclayGroup.com

Brett Sheets
 Senior Vice President
 Leasing
 602.224.4147 Direct
 480.596.9399 Office
bsheets@barclaygroup.com