

MARKETPLACE AT FLYING HORSE | SWC NORTH GATE BLVD & HWY 83 | COLORADO SPRINGS, CO



ACRES:
±20.82

SQUARE FEET:
±123,000

ZONING:
COMMERCIAL

ADDRESS:
SWC Northgate Blvd & Highway 83 Colorado Springs, Colorado

SUMMARY:
This grocery anchored neighborhood center is in the heart of the Flying Horse luxury community located in the rapidly growing city of Colorado Springs, Co. Situated on the corner of North Gate Blvd and Highway 83 this intersection boasts an average daily traffic count of nearly 55,000 VPD. The center's five mile trade contains a population of nearly 70,000 with an average household income of over \$150,000 per year.



BARCLAY
GROUP

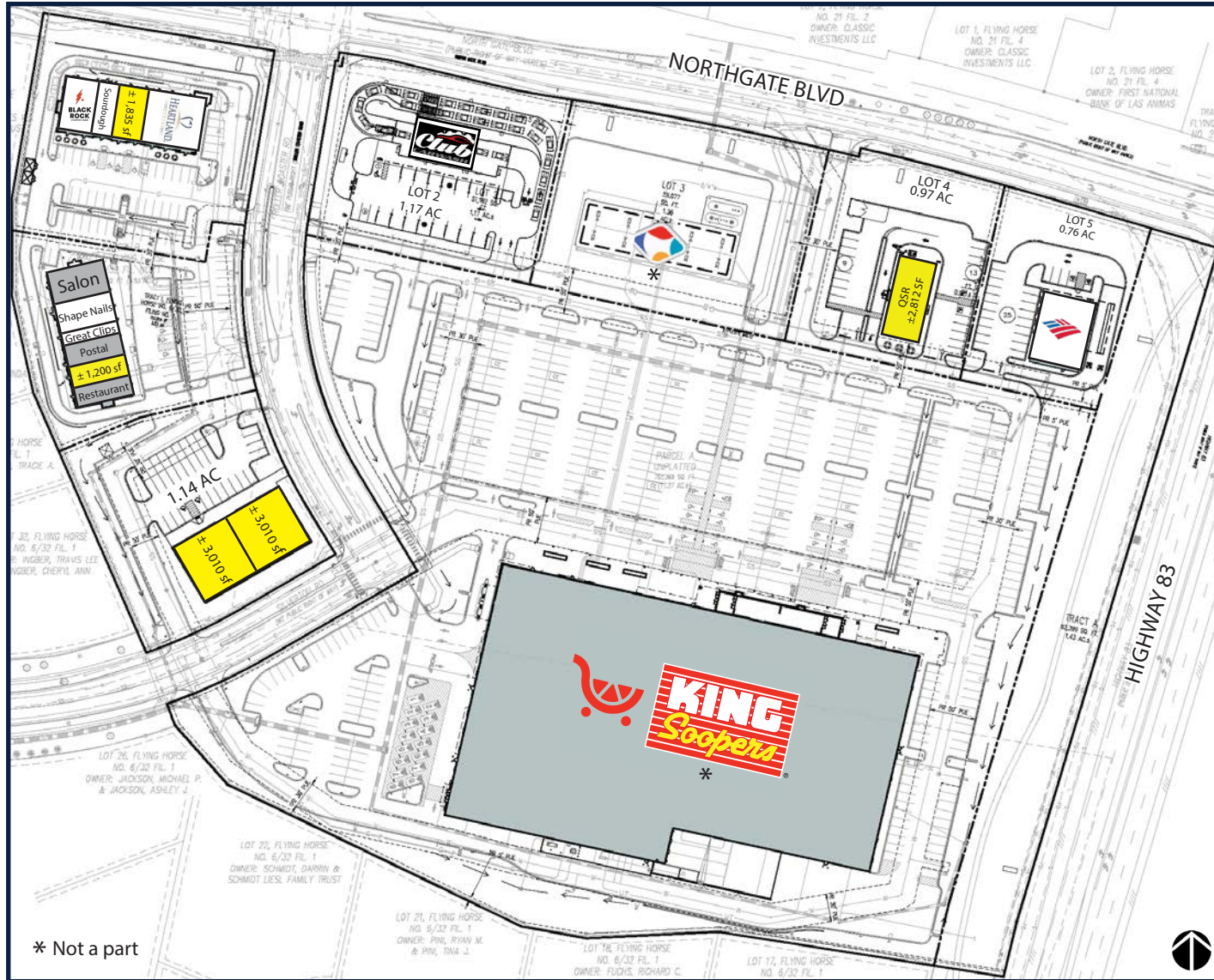
2415 E Camelback Rd, Suite 900
Phoenix, Arizona, 85016
www.BarclayGroup.com

Brett Sheets
Senior Vice President Leasing
602.224.4147 Direct
602.908.8837 Cell
bsheets@barclaygroup.com

Kristin Walrod
Director Leasing
602.224.4171 Direct
480.521.4822 Cell
kwalrod@barclaygroup.com

Matthew Archer
Leasing Associate
602.224.4160 Direct
602.908.8680 Cell
marcher@barclaygroup.com

MARKETPLACE AT FLYING HORSE | SITE PLAN



BARCLAY
GROUP

2415 E Camelback Rd, Suite 900
Phoenix, Arizona, 85016
www.BarclayGroup.com

Brett Sheets
Senior Vice President Leasing
602.224.4147 Direct
602.908.8837 Cell
bsheets@barclaygroup.com

Kristin Walrod
Director Leasing
602.224.4171 Direct
480.521.4822 Cell
kwalrod@barclaygroup.com

Matthew Archer
Leasing Associate
602.224.4160 Direct
602.908.8680 Cell
marcher@barclaygroup.com

MARKETPLACE AT FLYING HORSE | SHOPS A

SIGNED LEASE

AT LOI/LEASE

AVAILABLE



BARCLAY
GROUP

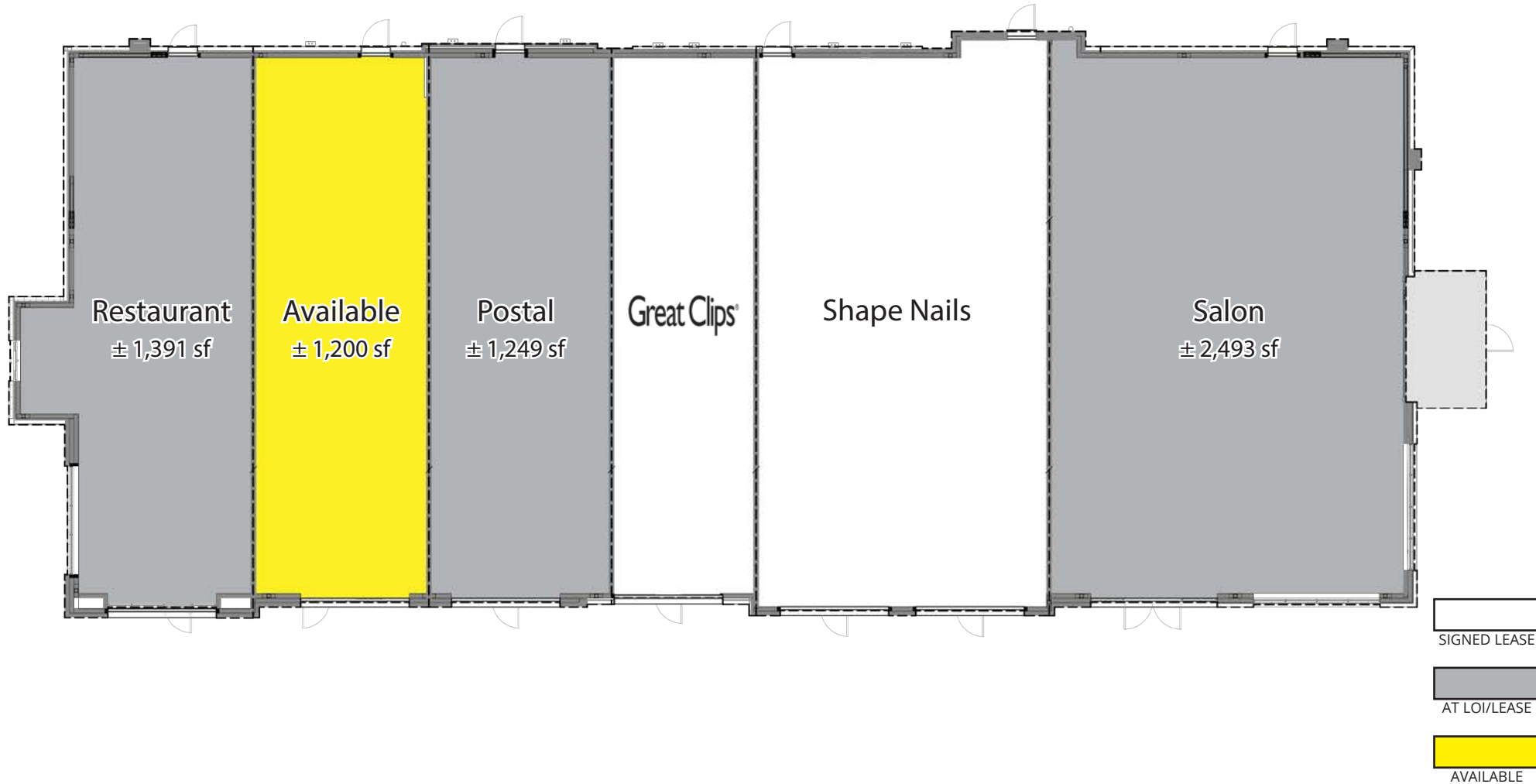
2415 E Camelback Rd, Suite 900
Phoenix, Arizona, 85016
www.BarclayGroup.com

Brett Sheets
Senior Vice President Leasing
602.224.4147 Direct
602.908.8837 Cell
bsheets@barclaygroup.com

Kristin Walrod
Director Leasing
602.224.4171 Direct
480.521.4822 Cell
kwalrod@barclaygroup.com

Matthew Archer
Leasing Associate
602.224.4160 Direct
602.908.8680 Cell
marcher@barclaygroup.com

MARKETPLACE AT FLYING HORSE | SHOPS B



BARCLAY
GROUP

2415 E Camelback Rd, Suite 900
Phoenix, Arizona, 85016
www.BarclayGroup.com

Brett Sheets
Senior Vice President Leasing
602.224.4147 Direct
602.908.8837 Cell
bsheets@barclaygroup.com

Kristin Walrod
Director Leasing
602.224.4171 Direct
480.521.4822 Cell
kwalrod@barclaygroup.com

Matthew Archer
Leasing Associate
602.224.4160 Direct
602.908.8680 Cell
marcher@barclaygroup.com

MARKETPLACE AT FLYING HORSE | SHOPS C



CONCEPTUAL SITE PLAN



BARCLAY
GROUP

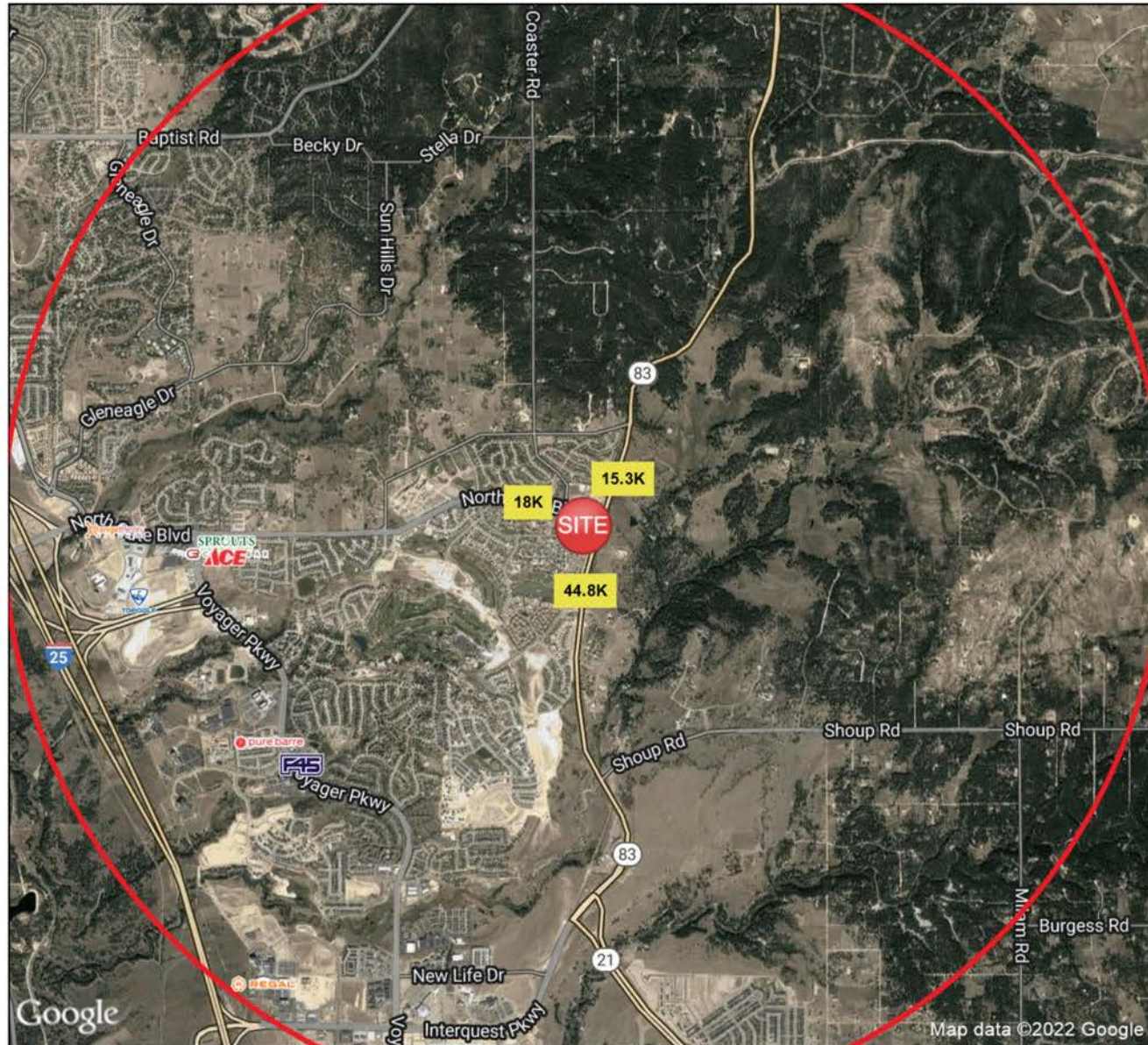
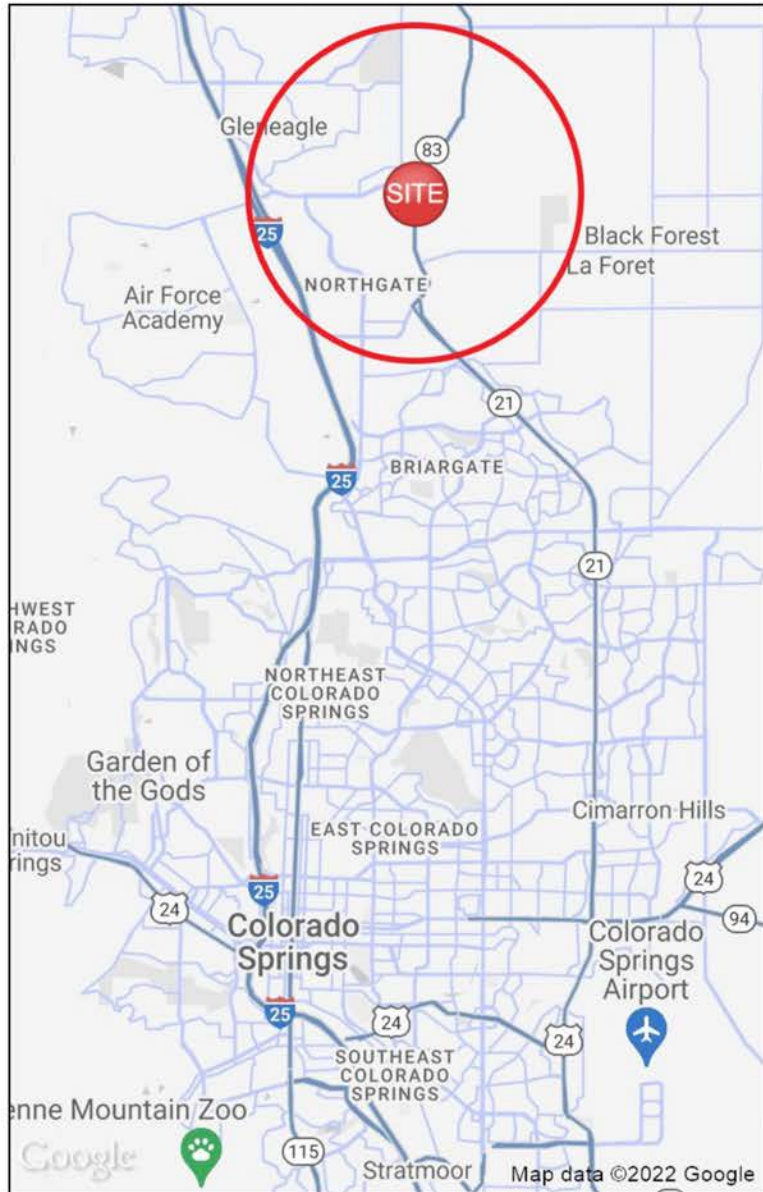
2415 E Camelback Rd, Suite 900
Phoenix, Arizona, 85016
www.BarclayGroup.com

Brett Sheets
Senior Vice President Leasing
602.224.4147 Direct
602.908.8837 Cell
bsheets@barclaygroup.com

Kristin Walrod
Director Leasing
602.224.4171 Direct
480.521.4822 Cell
kwalrod@barclaygroup.com

Matthew Archer
Leasing Associate
602.224.4160 Direct
602.908.8680 Cell
marcher@barclaygroup.com

MARKETPLACE AT FLYING HORSE | MAPS



BARCLAY
GROUP

2415 E Camelback Rd, Suite 900
Phoenix, Arizona, 85016
www.BarclayGroup.com

Brett Sheets
Senior Vice President Leasing
602.224.4147 Direct
602.908.8837 Cell
bsheets@barclaygroup.com

Kristin Walrod
Director Leasing
602.224.4171 Direct
480.521.4822 Cell
kwalrod@barclaygroup.com

Matthew Archer
Leasing Associate
602.224.4160 Direct
602.908.8680 Cell
marcher@barclaygroup.com

MARKETPLACE AT FLYING HORSE | DEMOGRAPHICS (3-MILES)

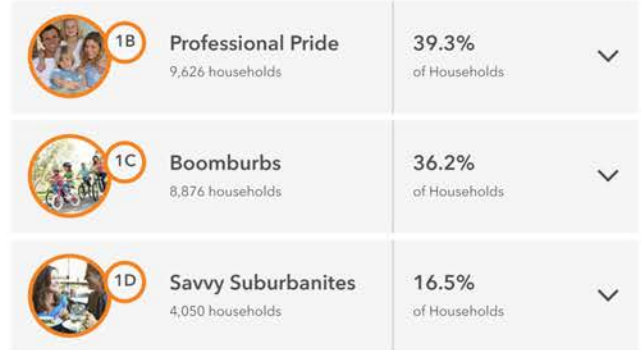
ANNUAL HOUSEHOLD SPENDING



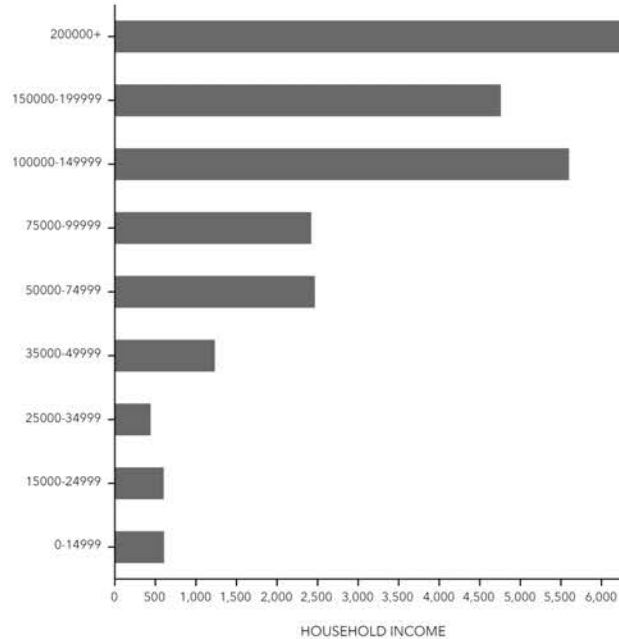
INCOME



Tapestry Segments



KEY FACTS

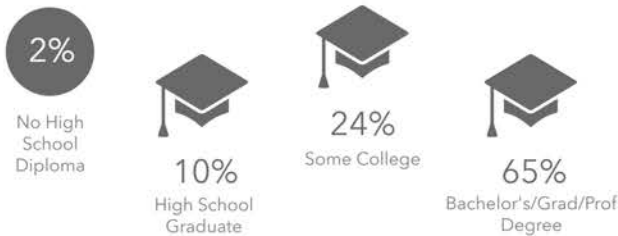


Average Household Size

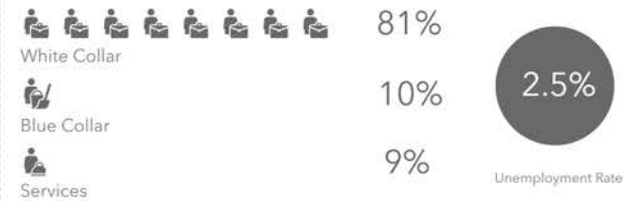
for this area
2.81 which is more than the average for United States

Area	Value	0.00	4.00
This area	2.81	[Bar chart showing 2.81 relative to 0.00 and 4.00]	
El Paso County	2.60	[Bar chart showing 2.60 relative to 0.00 and 4.00]	
United States	2.53	[Bar chart showing 2.53 relative to 0.00 and 4.00]	
Colorado	2.49	[Bar chart showing 2.49 relative to 0.00 and 4.00]	

EDUCATION



EMPLOYMENT



BARCLAY
GROUP

2415 E Camelback Rd, Suite 900
Phoenix, Arizona, 85016
www.BarclayGroup.com

Brett Sheets
Senior Vice President Leasing
602.224.4147 Direct
602.908.8837 Cell
bsheets@barclaygroup.com

Kristin Walrod
Director Leasing
602.224.4171 Direct
480.521.4822 Cell
kwalrod@barclaygroup.com

Matthew Archer
Leasing Associate
602.224.4160 Direct
602.908.8680 Cell
marcher@barclaygroup.com