

FRED MEYER - 16735 SE 272ND STREET | COVINGTON, WASHINGTON



ACRES:
±0.69

SQUARE FEET:
±30,000

ZONING:
MC

ADDRESS:
16735 SE 272ND STREET | COVINGTON, WASHINGTON

SUMMARY:
This Fred Meyers anchored center is located at the intersection of 168th Place SE and SE 272nd Street with a daily traffic count of over 38,000 vehicles per day. The surrounding trade area boasts a population of nearly 60,000 residents and nearly 50,000 workers with an average annual household income more than \$120,000.



2415 E Camelback Rd, Suite 900
Phoenix, Arizona, 85016
www.BarclayGroup.com

Jim Gardner
Executive Vice President
602.224.4149 Direct
480.596.9399 Office
jgardner@barclaygroup.com

OVERVIEW

TRAFFIC COUNTS

SE 272nd St NE: ± 9,610 VPD
168th Pl SE: ± 28,700 VPD
Total Traffic: ± 38,310 VPD

DEMOGRAPHICS

Average Household Income

1 Mile	3 Miles	5 Miles
\$117,074	\$129,544	\$120,301

Total Population

1 Mile	3 Miles	5 Miles
8,008	59,149	172,904

Daytime Population

1 Mile	3 Miles	5 Miles
8,776	48,880	140,232

Total Households

1 Mile	3 Miles	5 Miles
2,769	19,492	58,325

AVAILABLE

- PAD ±30,000 SF, 0.69 AC

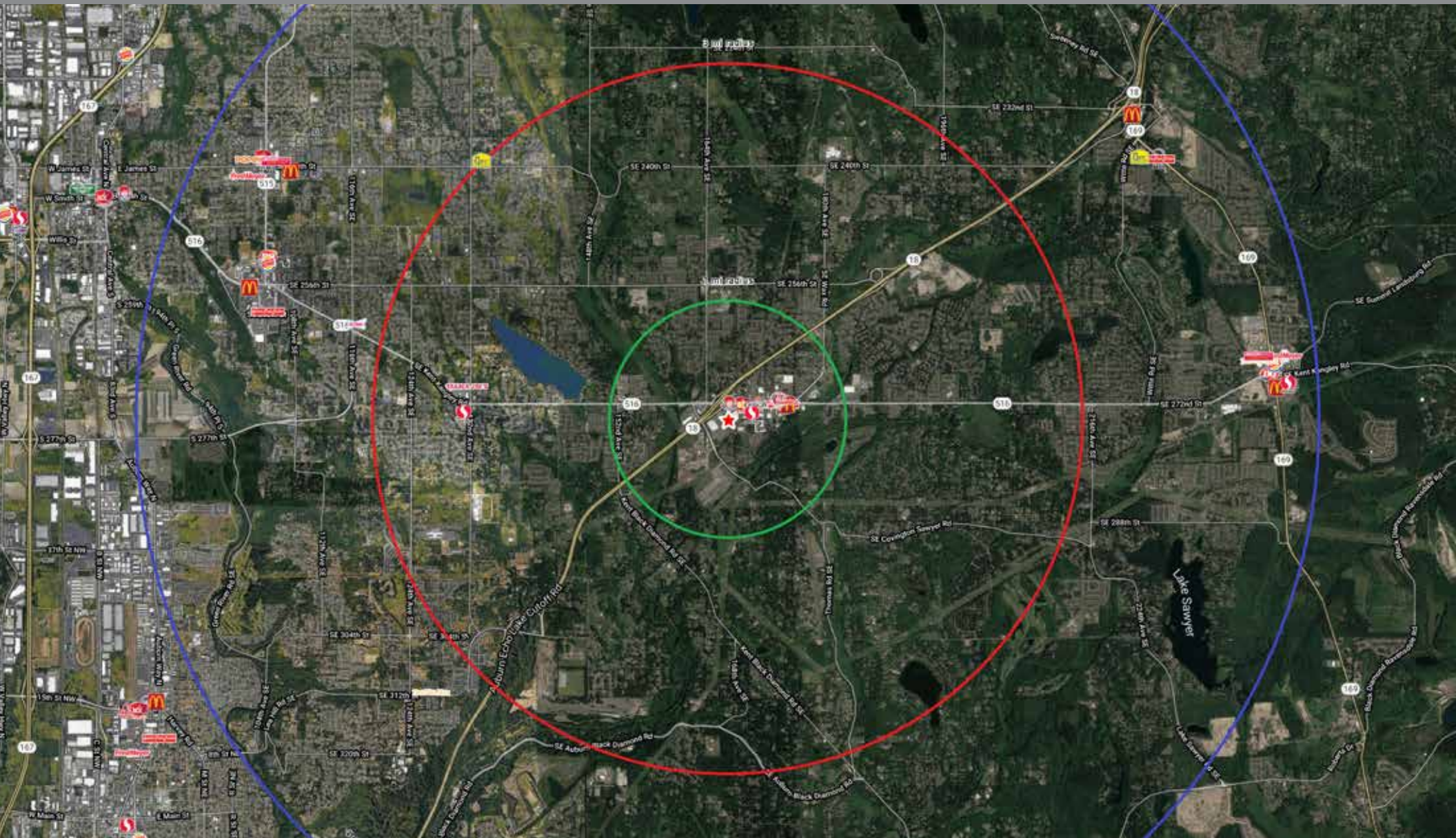


2415 E Camelback Rd, Suite 900
Phoenix, Arizona, 85016
www.BarclayGroup.com

Jim Gardner

Executive Vice President
602.224.4149 Direct
480.596.9399 Office
jgardner@barclaygroup.com

AERIAL MAP



2415 E Camelback Rd, Suite 900
Phoenix, Arizona, 85016
www.BarclayGroup.com

Jim Gardner
Executive Vice President
602.224.4149 Direct
480.596.9399 Office
jgardner@barclaygroup.com

DEMOGRAPHICS (3 MILES)

ANNUAL HOUSEHOLD SPENDING



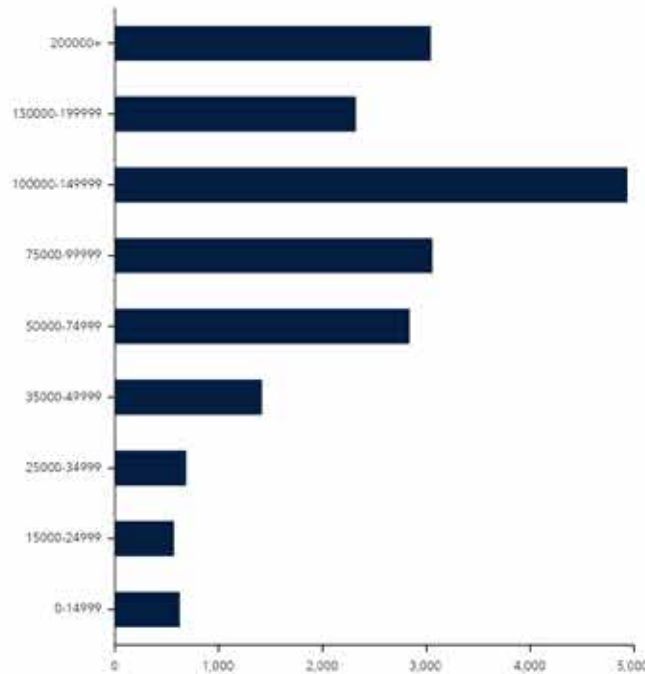
INCOME



Company/Business Name	Direction	Distance
TERIYAKI WOK	NE	0.0
LOS CABOS	NE	0.0
PUERTO VALLARTA COVINGTON	NW	0.1
HOUSE OF PHO	NW	0.1
CEDAR ENTERPRISES	NW	0.1
WENDY'S	NW	0.1

Closest 6 locations

KEY FACTS



Average Household Size

for this area

3.03

which is more than the average for United States

Area	Value	0.00	4.00
This area	3.03		
United States	2.58		
Washington	2.53		
King County	2.41		

EDUCATION



EMPLOYMENT

