

MAIN STREET MARKET | KERNERSVILLE, NC



LOCATION: OLD WINSTON ROAD AND
MAIN STREET, KERNERSVILLE, NC

SUMMARY:

- Anchored by 49,358 SF **LOWES FOODS**
- Kernersville is located at the heart of a metropolitan area which consists of the cities of Greensboro, High Point and Winston-Salem
- 25,200 sf of shop space for lease starting at 1,400 sf
- Restaurant end cap w/patio available
- 1.32 acre outparcel for sale, built to suit or ground lease



2300 Curlew Road, Suite 100
Palm Harbor, Florida 34683
www.BarclayGroup.com

Matt Fuller
Leasing and Land Sales
727-733-7828 Office
mfuller@barclaygroup.com

MAIN STREET MARKET | SITE PLAN

TENANTS

BLDG 230

SUITE A	1,400 SF	JERSEY MIKES
SUITE B/C	2,800 SF	TIGER KIM TAE KWON DO
SUITE D	1,400 SF	LEE NAILS
SUITE E	1,400 SF	EDEN BORN

BLDG 220

SUITE A/B	2,800 SF	BARBERITOS
SUITE C	1,400 SF	AVAILABLE
SUITE D	1,400 SF	AVAILABLE
SUITE E	1,400 SF	Benchmark PT
SUITE F/G	2,800 SF	LEDO'S PIZZA

BLDG 210

SUITE A	1,400 SF	CLEANERS
SUITE B	1,400 SF	YOSHI EXPRESS
SUITE C	1,400 SF	AVAILABLE
SUITE D	1,400 SF	TOBACCO/VAPE
SUITE E	2,800 SF	AVAILABLE

OUTPARCEL 2

SUITE A	3,500 SF	ASPEN DENTAL
SUITE B	3,200 SF	My Eyelab
SUITE C	2,500 SF	GO HEALTH
SUITE D	3,400 SF	TRULIANT CREDIT U



MAIN STREET MARKET

S. Main St. & Old Winston Rd. - Kernersville, NC • C&P Project #2170612 • 11-06-18

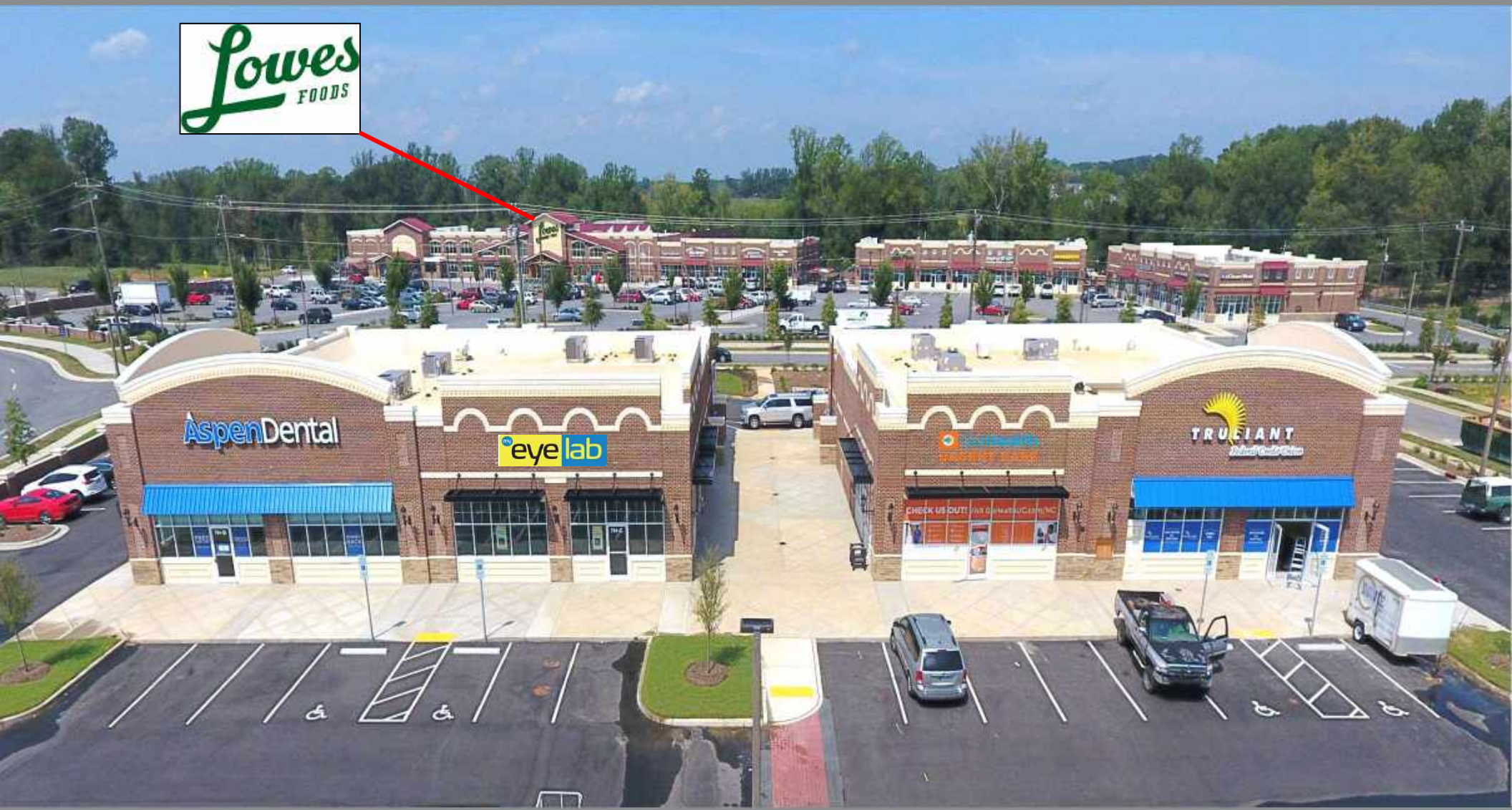
DISCLAIMER: THIS CONCEPTUAL SITE PLAN IS NOT AN EXACT DEPICTION OF THE FINAL COMPLETED DEVELOPMENT. THE PLAN IS PRELIMINARY AND SUBJECT TO CHANGE PENDING FINAL ZONING, GOVERNMENTAL, LOCAL, STATE, AND FEDERAL APPROVALS. THIS DOCUMENT IS STRICTLY CONFIDENTIAL AND IS MEANT FOR ITS RECIPIENTS ONLY. THE SITE PLAN SHALL NOT BE COPIED, REPRODUCED, DISTRIBUTED OR IN WHOLE OR IN PART OR TRANSFERRED TO ANY THIRD PARTY WITHOUT THE DEVELOPERS EXPRESSED WRITTEN CONSENT.



2300 Curlew Road, Suite 100
Palm Harbor, Florida 34683
www.BarclayGroup.com

Matt Fuller
Leasing and Land Sales
727-733-7828 Office
mfuller@barclaygroup.com

MAIN STREET MARKET | AERIAL



2300 Curlew Road, Suite 100
Palm Harbor, Florida 34683
www.BarclayGroup.com

Matt Fuller
Leasing and Land Sales
727-733-7828 Office
mfuller@barclaygroup.com

MAIN STREET MARKET | AERIAL



2300 Curlew Road, Suite 100
Palm Harbor, Florida 34683
www.BarclayGroup.com

Matt Fuller
Leasing and Land Sales
727-733-7828 Office
mfuller@barclaygroup.com

MAIN STREET MARKET | AERIAL MAP



2300 Curlew Road, Suite 100
Palm Harbor, Florida 34683
www.BarclayGroup.com

Matt Fuller
Leasing and Land Sales
727-733-7828 Office
mfuller@barclaygroup.com

MAIN STREET MARKET | DEMOGRAPHICS

1 Mile



3 Mile



5 Mile



2300 Curlew Road, Suite 100
Palm Harbor, Florida 34683
www.BarclayGroup.com

Matt Fuller
Leasing and Land Sales
727-733-7828 Office
mfuller@barclaygroup.com