

MARKETPLACE AT PRASADA | SURPRISE, ARIZONA



ACRES:
±17.46

ADDRESS:
15215 N COTTON LN SURPRISE, AZ 85388

SQUARE FEET:
±122,870

ZONING:
PAD
Regional Commercial

SUMMARY:

Marketplace at Prasada is a Fry's Marketplace anchored grocery component of the new Prasada Gateway Village; a 1,225 acre entertainment, shopping, living, and employment destination. Located just west of the Loop 303, the project is surrounded by the Surprise Farms and Sierra Mountain Communities. In addition, 30,000 new homes are planned in the immediate trade area.



2390 E Camelback Rd, Suite 200
Phoenix, Arizona, 85016
www.BarclayGroup.com

Jim Gardner
Executive Vice President
602.224.4149 Direct
480.596.9399 Office
jgardner@barclaygroup.com

OVERVIEW

TRAFFIC COUNTS

Greenway RD: 25,427 VPD

Cotton Ln: 13,000 VPD

Loop 303: 45,379 VPD

DEMOGRAPHICS

Average Household Income

| 1 Mile | 3 Miles | 5 Miles |
|----------|----------|----------|
| \$66,249 | \$73,723 | \$71,980 |

Total Population

| 1 Mile | 3 Miles | 5 Miles |
|--------|---------|---------|
| 13,906 | 77,068 | 135,809 |

Daytime Population

| 1 Mile | 3 Miles | 5 Miles |
|--------|---------|---------|
| 9,925 | 58,757 | 118,209 |

Total Households

| 1 Mile | 3 Miles | 5 Miles |
|--------|---------|---------|
| 4,163 | 28,116 | 52,903 |

AVAILABLE

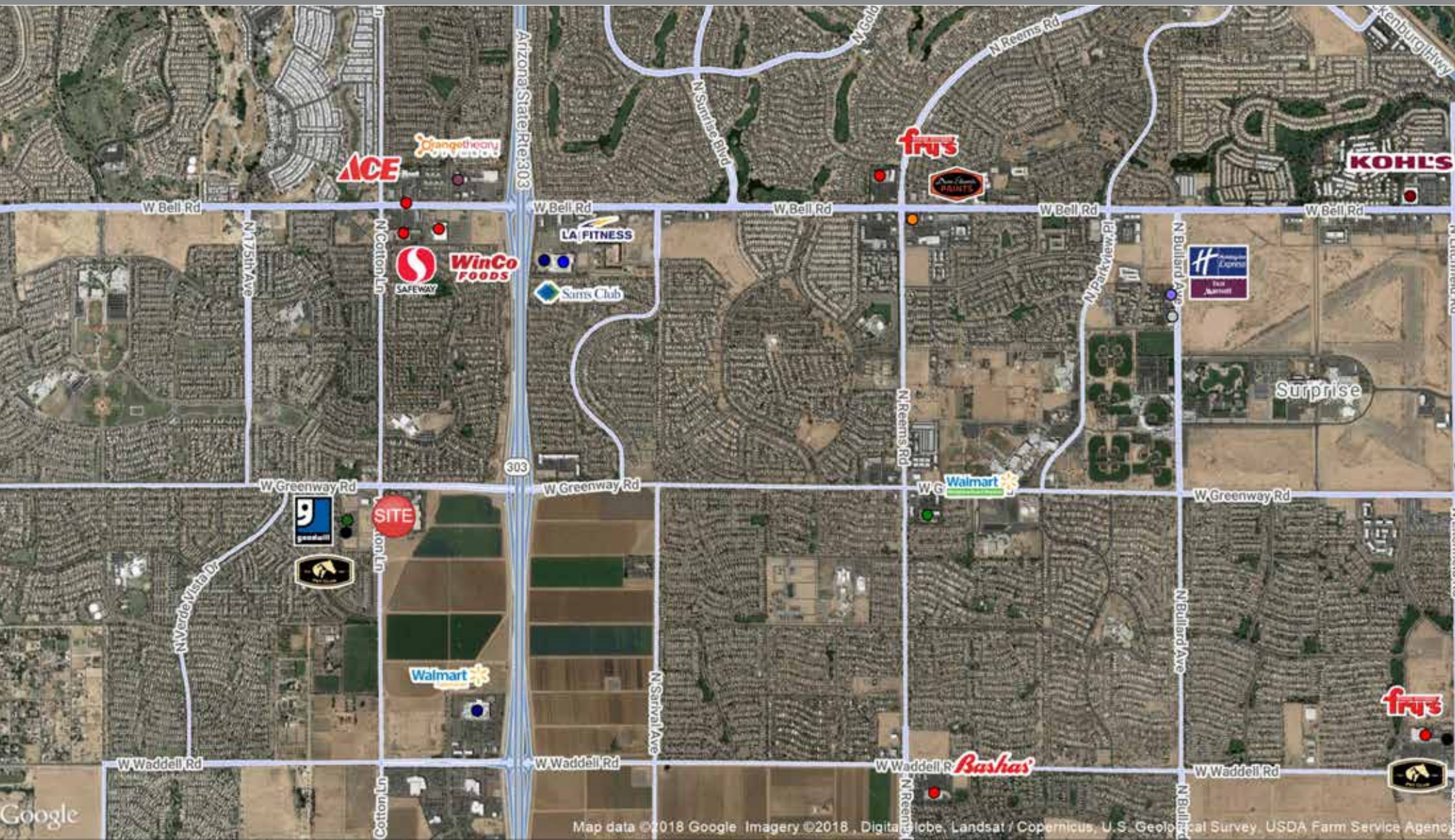
SUITE 111: ±1,285 Square Feet



2390 E Camelback Rd, Suite 200
Phoenix, Arizona, 85016
www.BarclayGroup.com

Jim Gardner
Executive Vice President
602.224.4149 Direct
480.596.9399 Office
jgardner@barclaygroup.com

AERIAL MAP



2390 E Camelback Rd, Suite 200
Phoenix, Arizona, 85016
www.BarclayGroup.com

Jim Gardner
Executive Vice President
602.224.4149 Direct
480.596.9399 Office
jgardner@barclaygroup.com

DEMOGRAPHICS (3 MILES)

ANNUAL HOUSEHOLD SPENDING



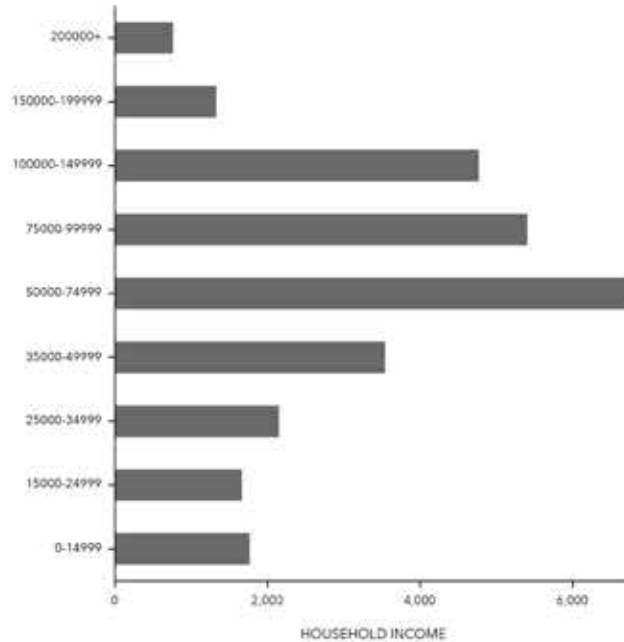
INCOME



Tapestry Segments



KEY FACTS

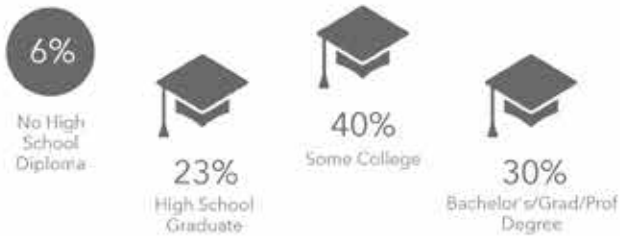


Average Household Size for this area

2.83 which is more than the average for United States

| Area | Value | 0.00 | 4.00 |
|-----------------|-------|------|------|
| This area | 2.83 | | |
| Maricopa County | 2.69 | | |
| Arizona | 2.64 | | |
| United States | 2.59 | | |

EDUCATION



EMPLOYMENT

