

64TH STREET & GREENWAY ROAD | PHOENIX, AZ



ACRES:
±8.16

SQUARE FEET:
±19,246

ZONING:
C-1
NEIGHBORHOOD RETAIL

ADDRESS:
6339 E GREENWAY RD, SCOTTSDALE, ARIZONA, 85254

SUMMARY:
Located near the border of north Scottsdale and Phoenix, this Fry's Marketplace anchored neighborhood center is close to the upscale Scottsdale Quarter and Kierland Commons shopping centers. The surrounding trade area boasts a population of over 225,000 residents and nearly 200,000 workers, with an average annual household income more than \$100,000. Over 40,000 vehicles per day pass through the intersection of Greenway Rd and 64th street which is a major route for commuters heading to the Scottsdale Air Park, home to nearly 3,000 companies with 55,000 employees.



2415 E Camelback Rd, Suite 900
Phoenix, Arizona, 85016
www.BarclayGroup.com

Jim Gardner
Executive Vice President
602.224.4149 Direct
480.596.9399 Office
jgardner@barclaygroup.com

OVERVIEW

TRAFFIC COUNTS

Greenway Road: ± 30,192 VPD
64th Street: ± 12,025 VPD
Total Traffic: ± 42,217 VPD

DEMOGRAPHICS

Average Household Income

1 Mile	3 Miles	5 Miles
\$122,967	\$113,807	\$111,607

Total Population

1 Mile	3 Miles	5 Miles
13,279	72,816	230,462

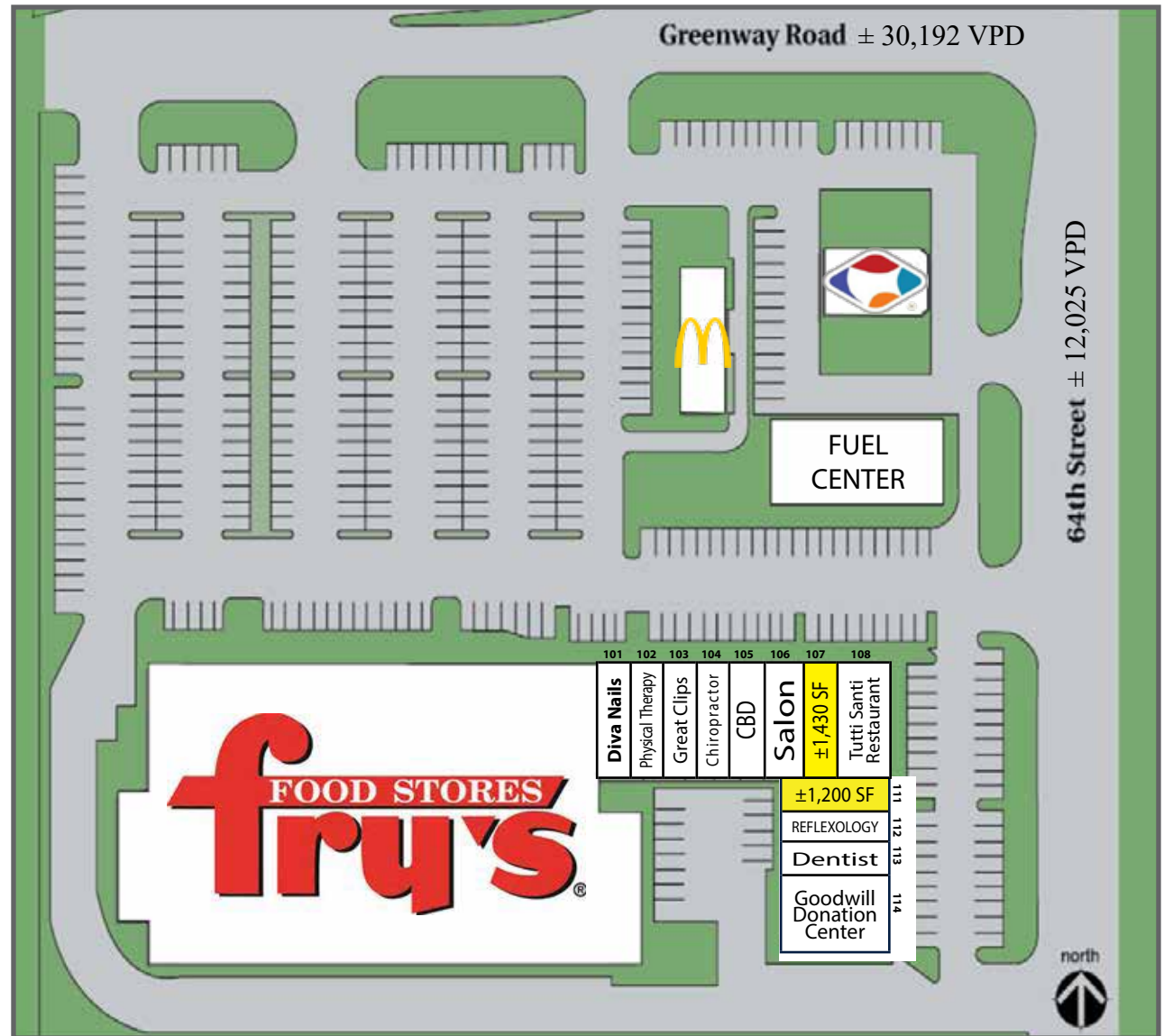
Daytime Population

1 Mile	3 Miles	5 Miles
16,745	128,768	298,746

Total Households

1 Mile	3 Miles	5 Miles
5,065	29,076	86,266

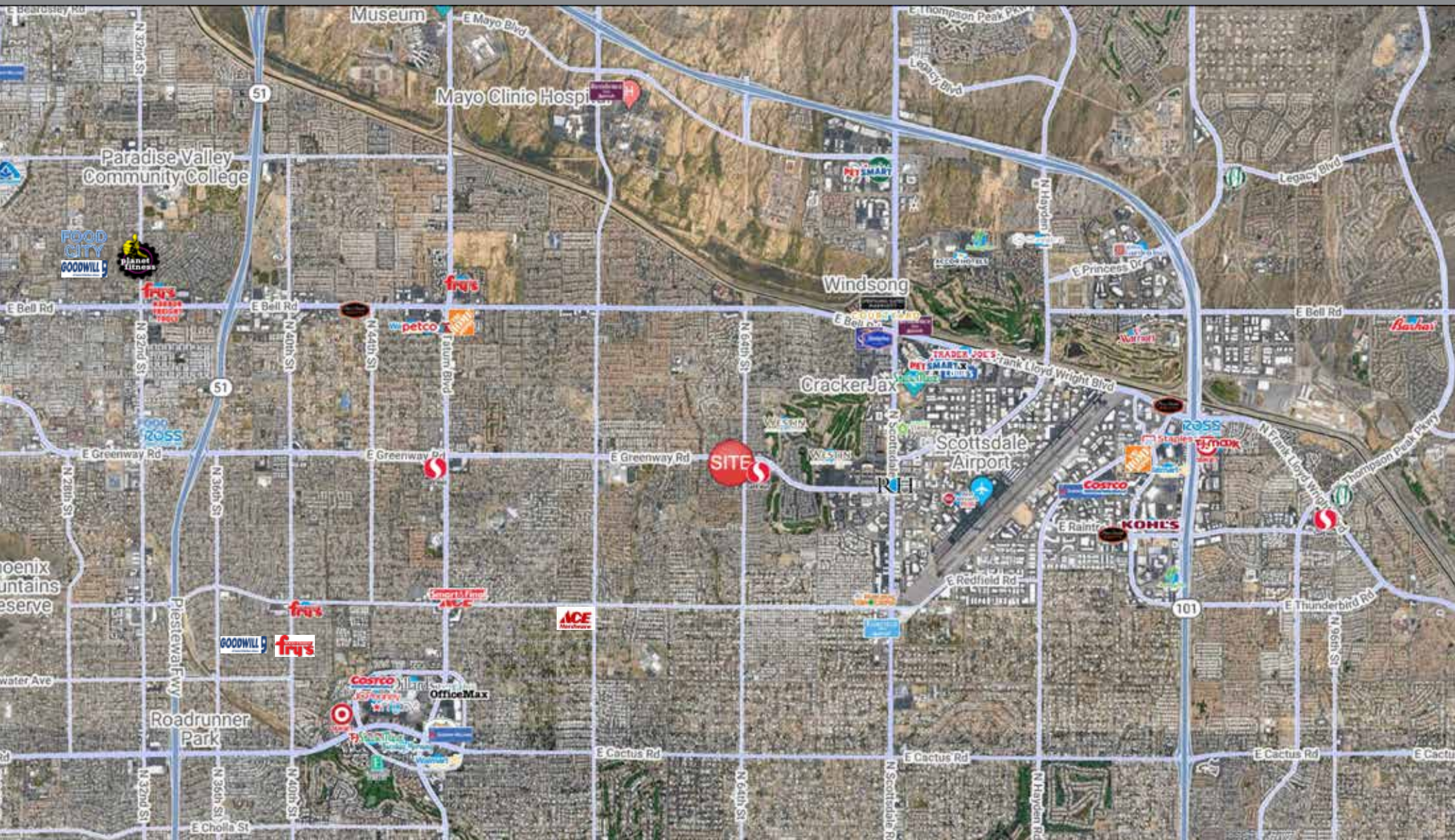
AVAILABLE
Suite 111: ±1,200 Square Feet



2415 E Camelback Rd, Suite 900
 Phoenix, Arizona, 85016
www.BarclayGroup.com

Jim Gardner
 Executive Vice President
 602.224.4149 Direct
 480.596.9399 Office
jgardner@barclaygroup.com

AERIAL MAP



2415 E Camelback Rd, Suite 900
Phoenix, Arizona, 85016
www.BarclayGroup.com

Jim Gardner
Executive Vice President
602.224.4149 Direct
480.596.9399 Office
jgardner@barclaygroup.com

DEMOGRAPHICS (3 MILES)

ANNUAL HOUSEHOLD SPENDING



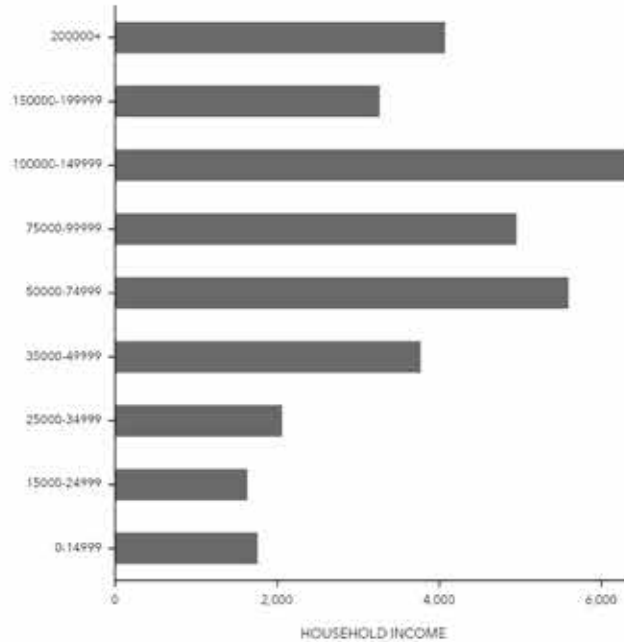
INCOME



Tapestry Segments



KEY FACTS



Average Household Size for this area

2.31 which is less than the average for United States

Area	Value	0.00	4.00
Maricopa County	2.69		
Arizona	2.64		
United States	2.59		
This area	2.31		

EDUCATION



EMPLOYMENT

