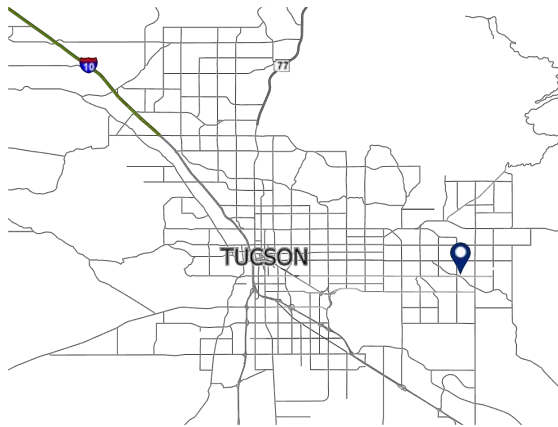


# OLD SPANISH TRAIL CROSSING | TUCSON, ARIZONA



## ADDRESS:

9525 E Old Spanish Trail, Tucson, AZ 85748

## SUMMARY:

Old Spanish Trail Crossing is located on a major commercial intersection in one of Tucson's fastest growing trade areas. This center boasts a strong population of over 160,000 with an average household income of \$75,000+ surrounding site. Located at a high traffic intersection that is the crossroads of three major streets with combined traffic counts of over 40,000 vehicles daily. Monument signage available.



**BARCLAY**  
GROUP

2415 E Camelback Rd, Suite 900  
Phoenix, Arizona, 85016  
[www.BarclayGroup.com](http://www.BarclayGroup.com)  
**Availability: 602.224.4166**

**Brett Sheets**  
*Senior Vice President Leasing*  
602.224.4147 Direct  
602.908.8837 Cell  
[bsheets@barclaygroup.com](mailto:bsheets@barclaygroup.com)

**Kristin Walrod**  
*Director Leasing*  
602.224.4171 Direct  
480.521.4822 Cell  
[kwalrod@barclaygroup.com](mailto:kwalrod@barclaygroup.com)

**Matthew Archer**  
*Leasing Associate*  
602.224.4160 Direct  
602.908.8680 Cell  
[marcher@barclaygroup.com](mailto:marcher@barclaygroup.com)

# OLD SPANISH TRAIL CROSSING | SITE PLAN



**ACRES:** ±29.00 **SQUARE FEET:** ±210,583 **ZONING:** Commercial



**BARCLAY**  
GROUP

2415 E Camelback Rd, Suite 900  
Phoenix, Arizona, 85016  
[www.BarclayGroup.com](http://www.BarclayGroup.com)  
**Availability: 602.224.4166**

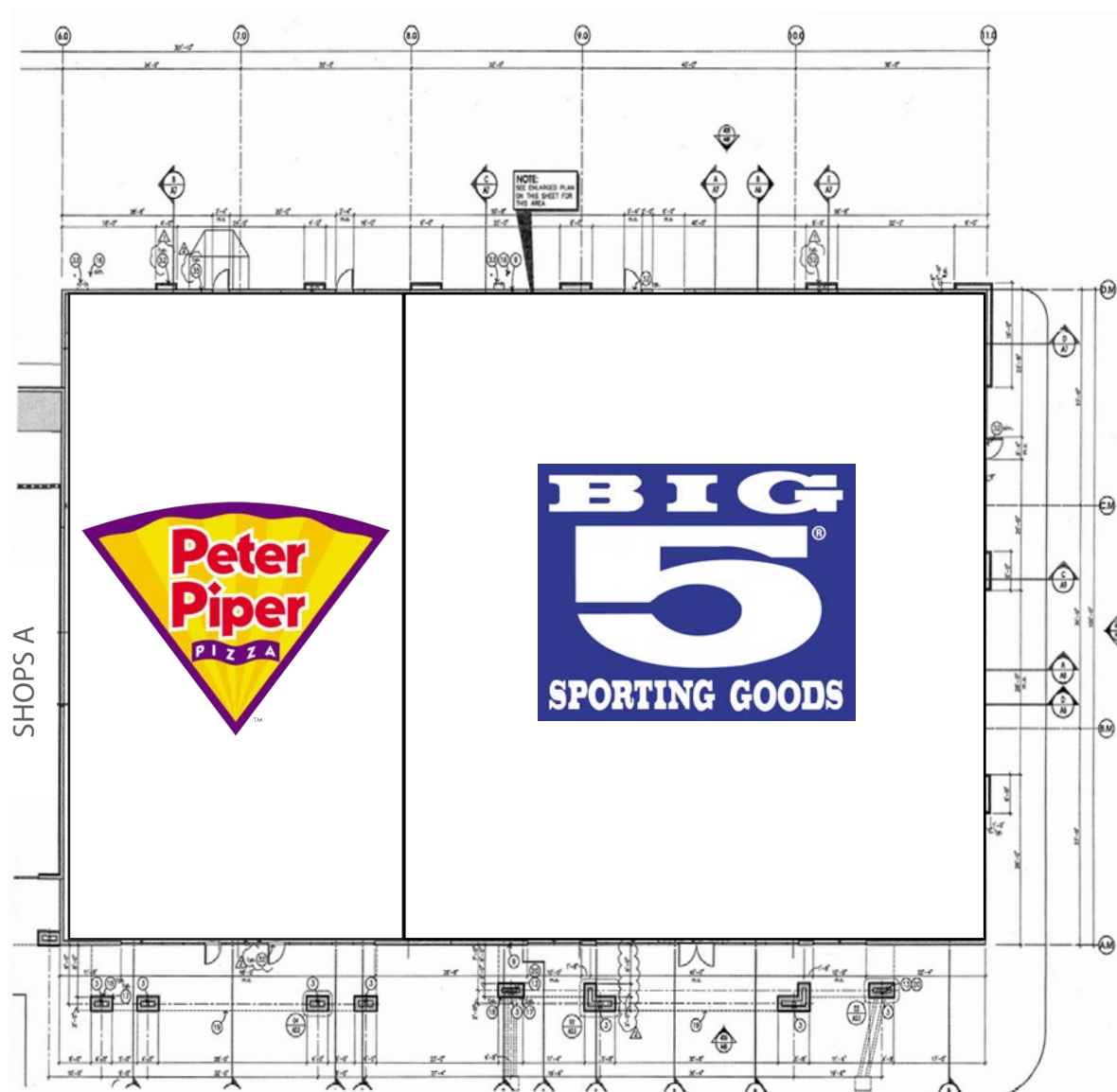
**Brett Sheets**  
Senior Vice President Leasing  
602.224.4147 Direct  
602.908.8837 Cell  
[bsheets@barclaygroup.com](mailto:bsheets@barclaygroup.com)

**Kristin Walrod**  
Director Leasing  
602.224.4171 Direct  
480.521.4822 Cell  
[kwalrod@barclaygroup.com](mailto:kwalrod@barclaygroup.com)

**Matthew Archer**  
Leasing Associate  
602.224.4160 Direct  
602.908.8680 Cell  
[marcher@barclaygroup.com](mailto:marcher@barclaygroup.com)



# OLD SPANISH TRAIL CROSSING | MINOR BUILDING



**BARCLAY**  
GROUP

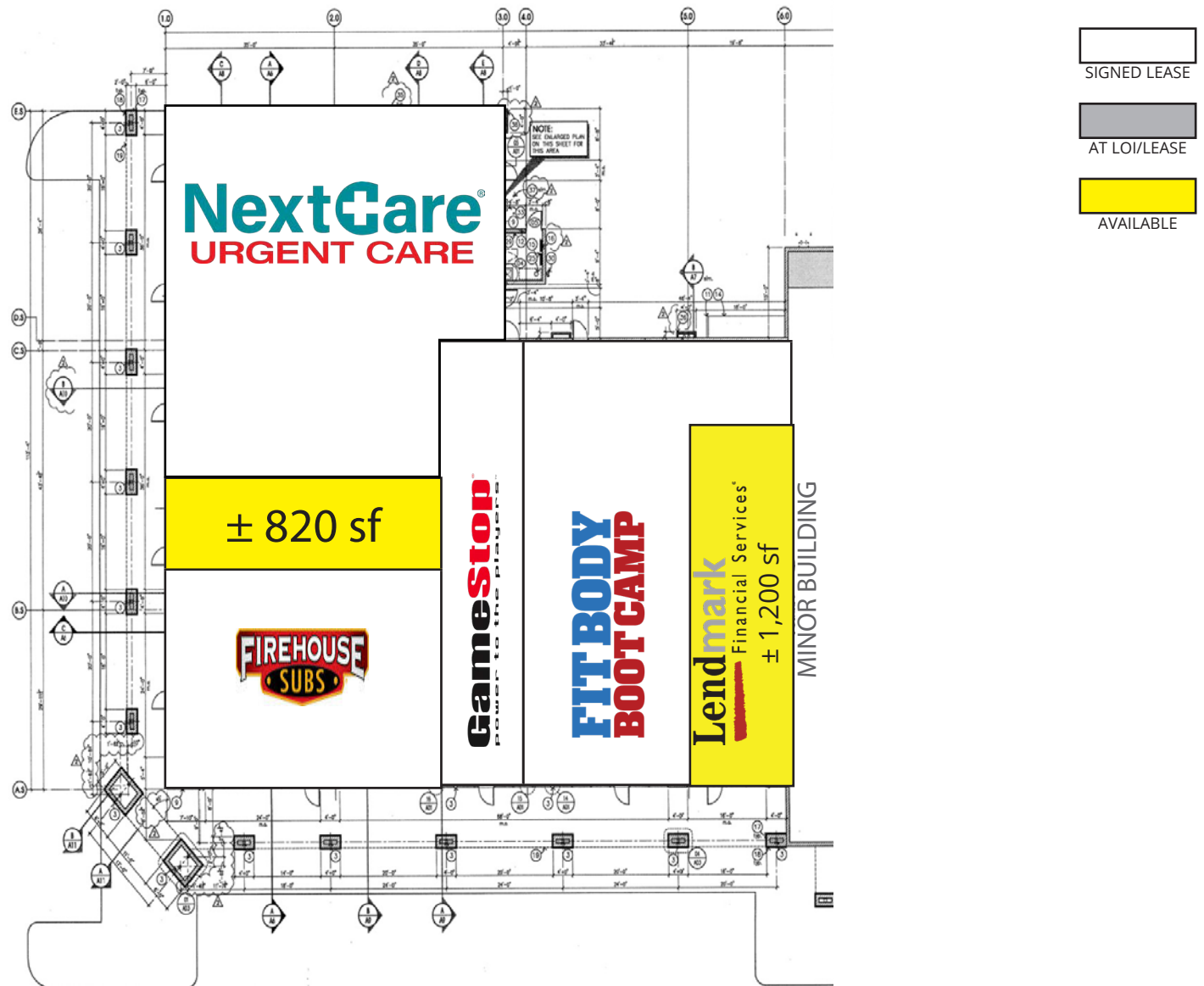
2415 E Camelback Rd, Suite 900  
Phoenix, Arizona, 85016  
[www.BarclayGroup.com](http://www.BarclayGroup.com)  
**Availability: 602.224.4166**

**Brett Sheets**  
Senior Vice President Leasing  
602.224.4147 Direct  
602.908.8837 Cell  
[bsheets@barclaygroup.com](mailto:bsheets@barclaygroup.com)

**Kristin Walrod**  
Director Leasing  
602.224.4171 Direct  
480.521.4822 Cell  
[kwalrod@barclaygroup.com](mailto:kwalrod@barclaygroup.com)

**Matthew Archer**  
Leasing Associate  
602.224.4160 Direct  
602.908.8680 Cell  
[marcher@barclaygroup.com](mailto:marcher@barclaygroup.com)

# OLD SPANISH TRAIL CROSSING | SHOPS A



**BARCLAY**  
GROUP

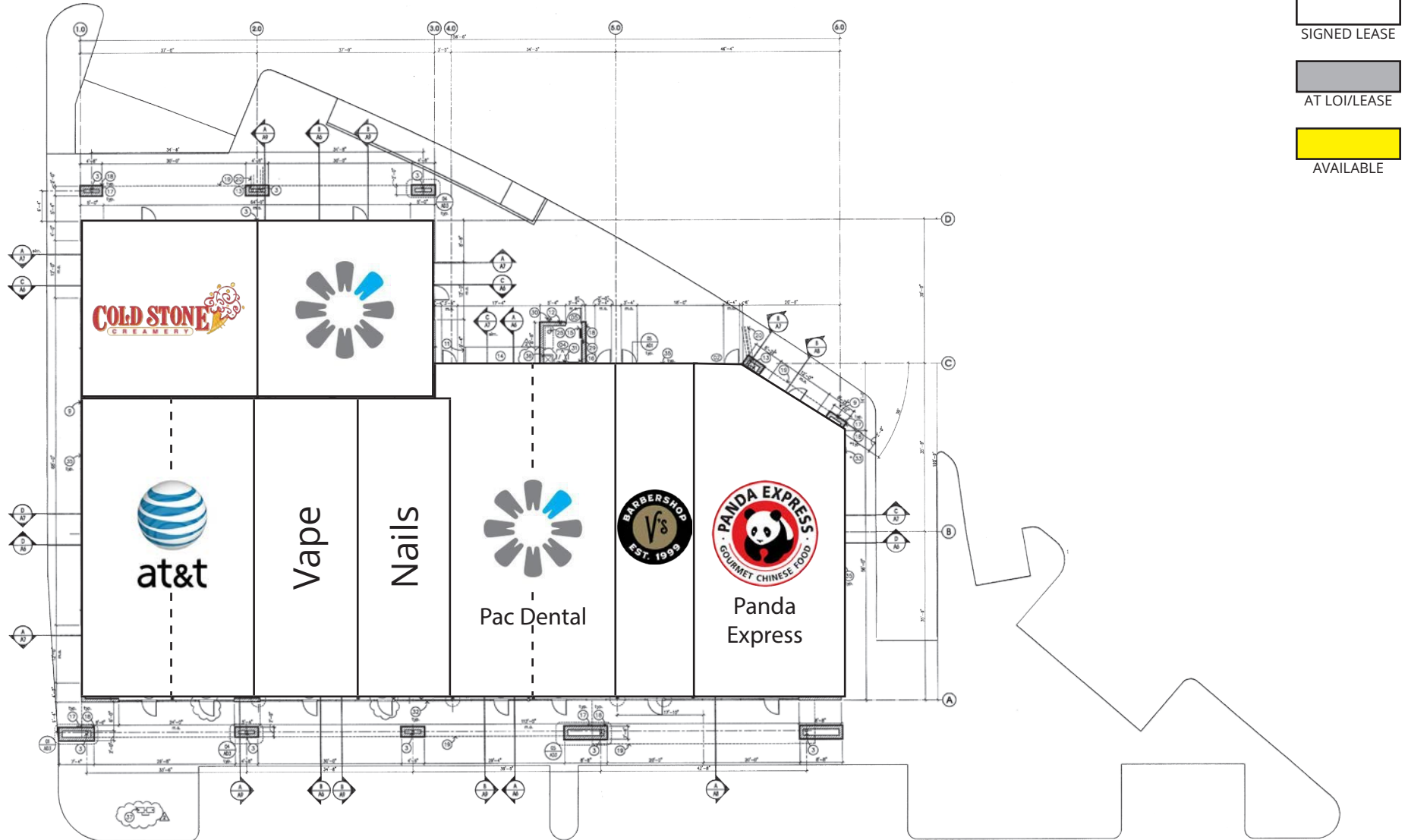
2415 E Camelback Rd, Suite 900  
Phoenix, Arizona, 85016  
[www.BarclayGroup.com](http://www.BarclayGroup.com)  
**Availability: 602.224.4166**

**Brett Sheets**  
Senior Vice President Leasing  
602.224.4147 Direct  
602.908.8837 Cell  
[bsheets@barclaygroup.com](mailto:bsheets@barclaygroup.com)

**Kristin Walrod**  
Director Leasing  
602.224.4171 Direct  
480.521.4822 Cell  
[kwalrod@barclaygroup.com](mailto:kwalrod@barclaygroup.com)

**Matthew Archer**  
Leasing Associate  
602.224.4160 Direct  
602.908.8680 Cell  
[marcher@barclaygroup.com](mailto:marcher@barclaygroup.com)

# OLD SPANISH TRAIL CROSSING | PAD 2



**BARCLAY**  
GROUP

2415 E Camelback Rd, Suite 900  
Phoenix, Arizona, 85016  
[www.BarclayGroup.com](http://www.BarclayGroup.com)  
**Availability: 602.224.4166**

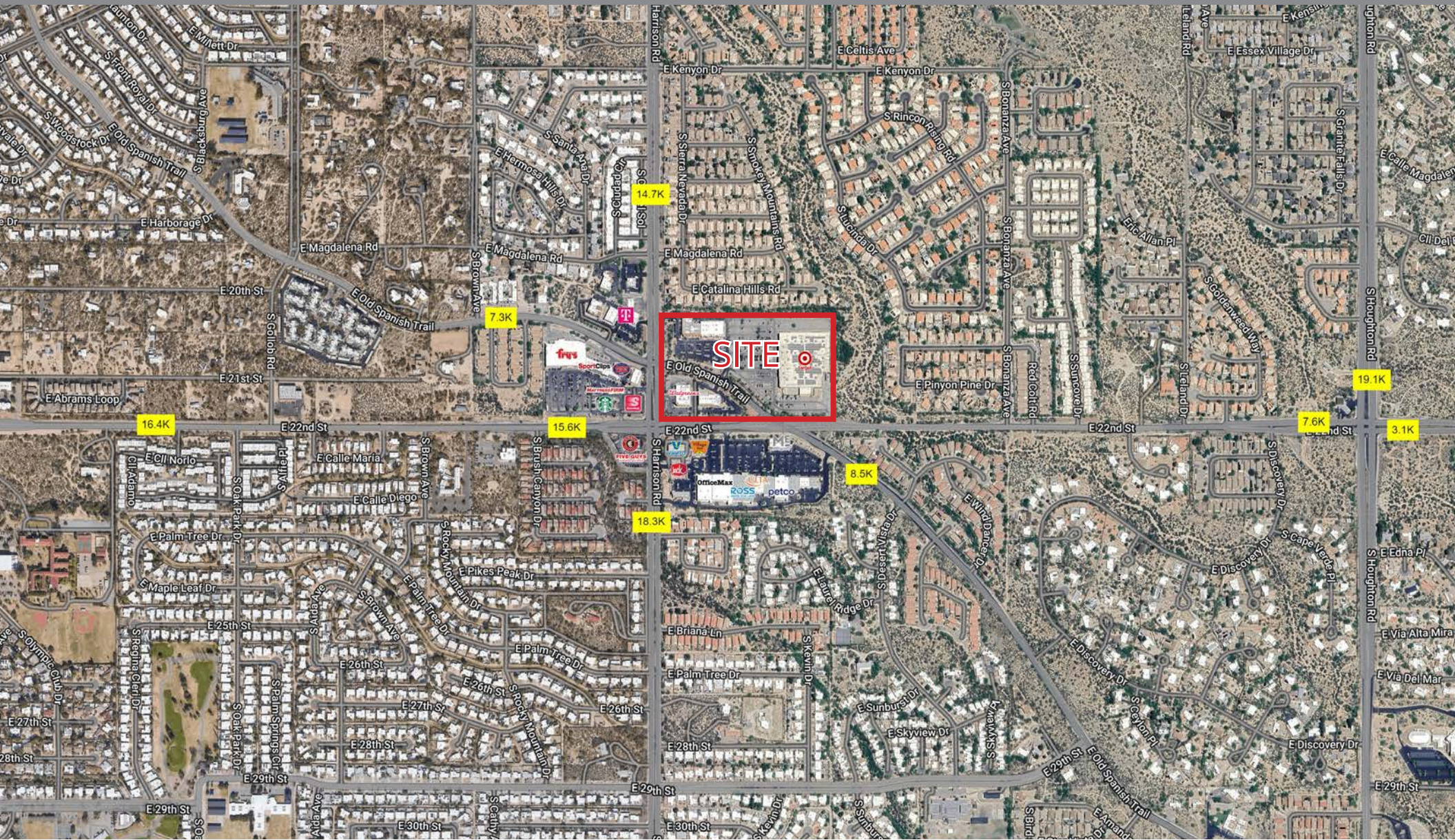
**Brett Sheets**  
Senior Vice President Leasing  
602.224.4147 Direct  
602.908.8837 Cell  
[bsheets@barclaygroup.com](mailto:bsheets@barclaygroup.com)

**Kristin Walrod**  
Director Leasing  
602.224.4171 Direct  
480.521.4822 Cell  
[kwalrod@barclaygroup.com](mailto:kwalrod@barclaygroup.com)

**Matthew Archer**  
Leasing Associate  
602.224.4160 Direct  
602.908.8680 Cell  
[marcher@barclaygroup.com](mailto:marcher@barclaygroup.com)



# OLD SPANISH TRAIL CROSSING | AERIAL



**BARCLAY**  
GROUP

2415 E Camelback Rd, Suite 900  
Phoenix, Arizona, 85016  
[www.BarclayGroup.com](http://www.BarclayGroup.com)  
**Availability: 602.224.4166**

**Brett Sheets**  
Senior Vice President Leasing  
602.224.4147 Direct  
602.908.8837 Cell  
[bsheets@barclaygroup.com](mailto:bsheets@barclaygroup.com)

**Kristin Walrod**  
Director Leasing  
602.224.4171 Direct  
480.521.4822 Cell  
[kwalrod@barclaygroup.com](mailto:kwalrod@barclaygroup.com)

**Matthew Archer**  
Leasing Associate  
602.224.4160 Direct  
602.908.8680 Cell  
[marcher@barclaygroup.com](mailto:marcher@barclaygroup.com)



# OLD SPANISH TRAIL CROSSING | 3-MILE DEMOGRAPHICS

## ANNUAL HOUSEHOLD SPENDING



## INCOME



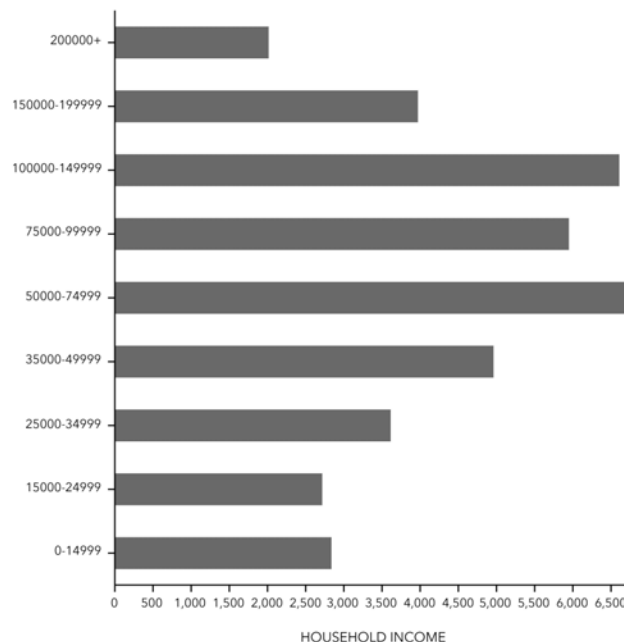
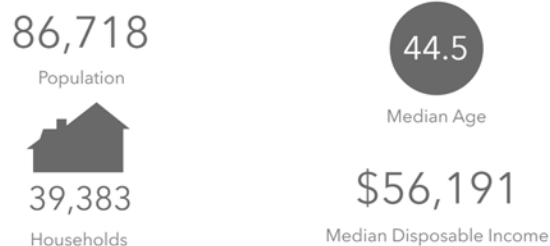
## 2024 Households By Income (Esri)

The largest group: \$50,000 - \$74,999 (17.0%)

The smallest group: \$200,000+ (5.1%)

Indicator ▲	Value	Diff	
<\$15,000	7.2%	-2.0%	
\$15,000 - \$24,999	6.9%	-0.3%	
\$25,000 - \$34,999	9.2%	+0.5%	
\$35,000 - \$49,999	12.6%	+1.4%	
\$50,000 - \$74,999	17.0%	+0.8%	
\$75,000 - \$99,999	15.1%	+1.6%	
\$100,000 - \$149,999	16.8%	+0.1%	
\$150,000 - \$199,999	10.1%	+1.0%	
\$200,000+	5.1%	-3.0%	

## KEY FACTS



Bars show deviation from Pima County

## Average Household Size

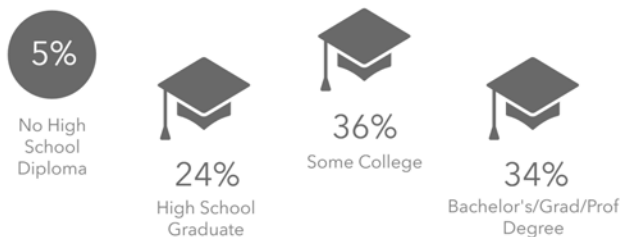
for this area

2.18

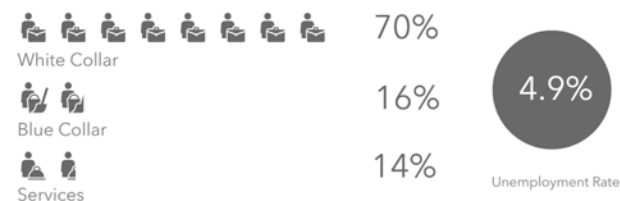
which is less than the average for United States

Area	Value ▼	0.00	4.00
Arizona	2.56		
United States	2.53		
Pima County	2.34		
This area	2.18		

## EDUCATION



## EMPLOYMENT



Source: Esri Business Analyst



**BARCLAY**  
GROUP

2415 E Camelback Rd, Suite 900  
Phoenix, Arizona, 85016  
www.BarclayGroup.com  
**Availability: 602.224.4166**

**Brett Sheets**  
Senior Vice President Leasing  
602.224.4147 Direct  
602.908.8837 Cell  
bsheets@barclaygroup.com

**Kristin Walrod**  
Director Leasing  
602.224.4171 Direct  
480.521.4822 Cell  
kwalrod@barclaygroup.com

**Matthew Archer**  
Leasing Associate  
602.224.4160 Direct  
602.908.8680 Cell  
marcher@barclaygroup.com