

# 90TH STREET & VIA LINDA | SCOTTSDALE, AZ

**ACRES:**

±11.96

**SQUARE FEET:**

±32,717

**ZONING:**

C-3

HIGHWAY COMMERCIAL  
DISTRICT

**ADDRESS:**

8900 E VÍA LINDA, SCOTTSDALE, AZ 85258

**SUMMARY:**

This Fry's marketplace anchored neighborhood center is located on a high traffic intersection with traffic counts of over 60,000 vehicles per day. The center is adjacent to the 101 freeway as well as the Pima Medical Center and boasts a 5-mile daytime population in excess of 200,000. Additionally, the surrounding neighborhood consists of well educated white collar workers with an average household income of over \$120,000 within a 5-mile radius.



**BARCLAY**  
GROUP

2415 E Camelback Rd, Suite 900  
Phoenix, Arizona, 85016  
[www.BarclayGroup.com](http://www.BarclayGroup.com)  
**Leasing: 602.224.4166**

**Brett Sheets**

Senior Vice President Leasing  
602.224.4147 Direct  
602.908.8837 Cell  
[bsheets@barclaygroup.com](mailto:bsheets@barclaygroup.com)

**Kristin Walrod**

Director Leasing  
602.224.4171 Direct  
480.521.4822 Cell  
[kwalrod@barclaygroup.com](mailto:kwalrod@barclaygroup.com)

**Matthew Archer**

Leasing Associate  
602.224.4160 Direct  
602.908.8680 Cell  
[marcher@barclaygroup.com](mailto:marcher@barclaygroup.com)



# OVERVIEW

## TRAFFIC COUNTS

Via Linda: ± 25,300 VPD

90th Street: ± 24,915 VPD

## DEMOGRAPHICS

### Average Household Income

1 Mile	3 Miles	5 Miles
\$105,391	\$131,320	\$128,586

### Total Population

1 Mile	3 Miles	5 Miles
7,023	65,585	149,345

### Daytime Population

1 Mile	3 Miles	5 Miles
26,089	68,896	239,226

### Total Households

1 Mile	3 Miles	5 Miles
3,513	28,322	69,372



**BARCLAY**  
GROUP

2415 E Camelback Rd, Suite 900  
Phoenix, Arizona, 85016  
www.BarclayGroup.com  
**Leasing: 602.224.4166**

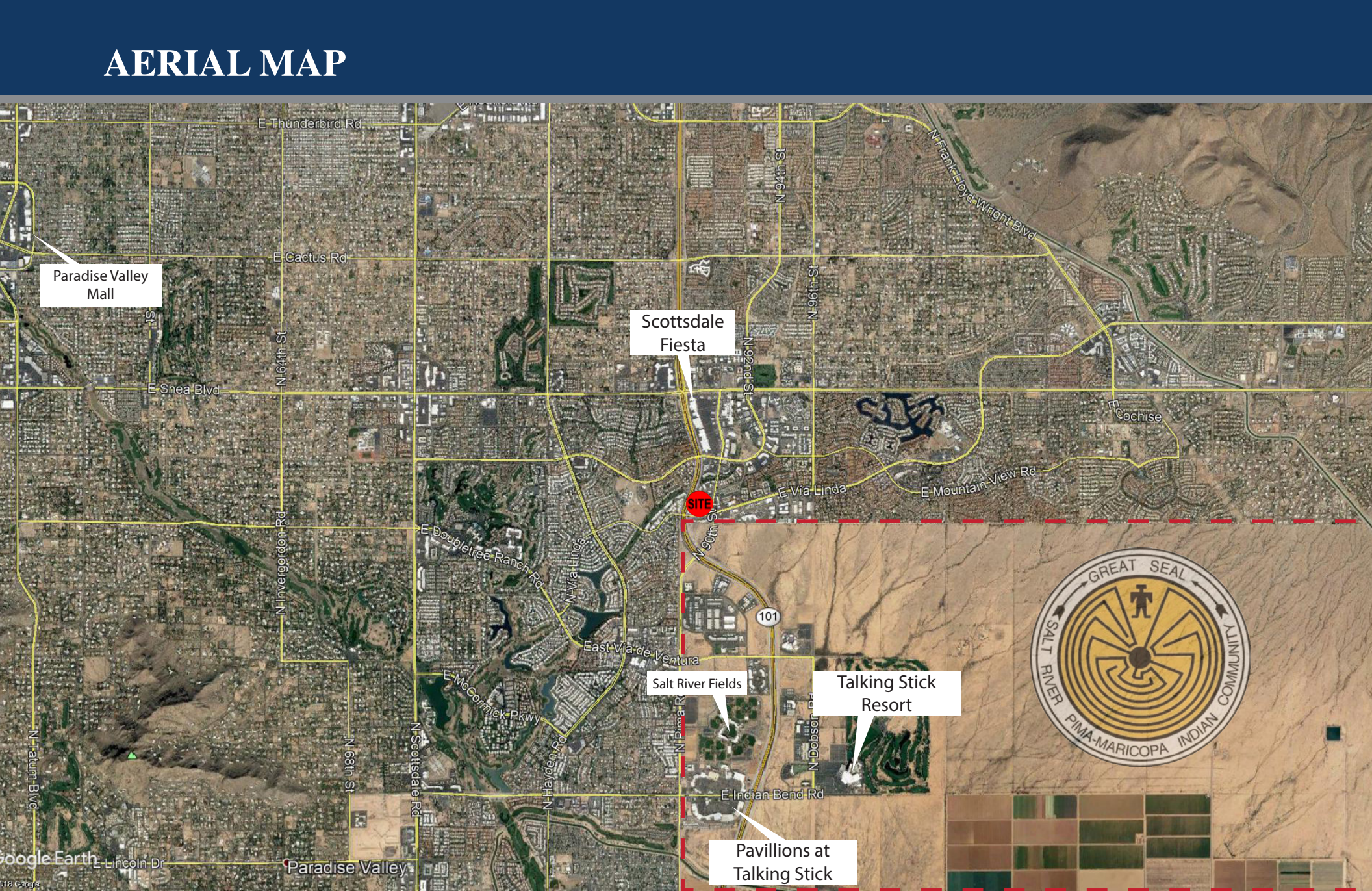
**Brett Sheets**  
Senior Vice President Leasing  
602.224.4147 Direct  
602.908.8837 Cell  
bsheets@barclaygroup.com

**Kristin Walrod**  
Director Leasing  
602.224.4171 Direct  
480.521.4822 Cell  
kwalrod@barclaygroup.com

**Matthew Archer**  
Leasing Associate  
602.224.4160 Direct  
602.908.8680 Cell  
marcher@barclaygroup.com



## AERIAL MAP



2415 E Camelback Rd, Suite 900  
Phoenix, Arizona, 85016  
[www.BarclayGroup.com](http://www.BarclayGroup.com)  
**Leasing: 602.224.4166**

**Brett Sheets**  
*Senior Vice President Leasing*  
 602.224.4147 Direct  
 602.908.8837 Cell  
 bsheets@barclaygroup.com

**Kristin Walrod**  
*Director Leasing*  
 602.224.4171 Direct  
 480.521.4822 Cell  
 kwalrod@barclaygroup.com

**Matthew Archer**  
Leasing Associate  
602.224.4160 Direct  
602.908.8680 Cell  
marcher@barclaygroup.com



# DEMOGRAPHICS (3 MILES)

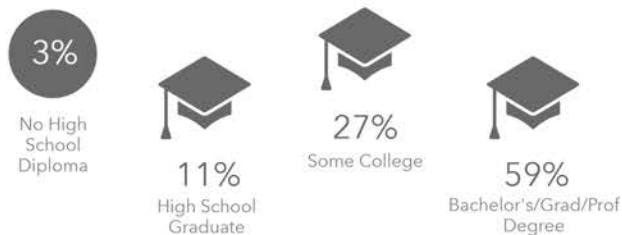
## ANNUAL HOUSEHOLD SPENDING



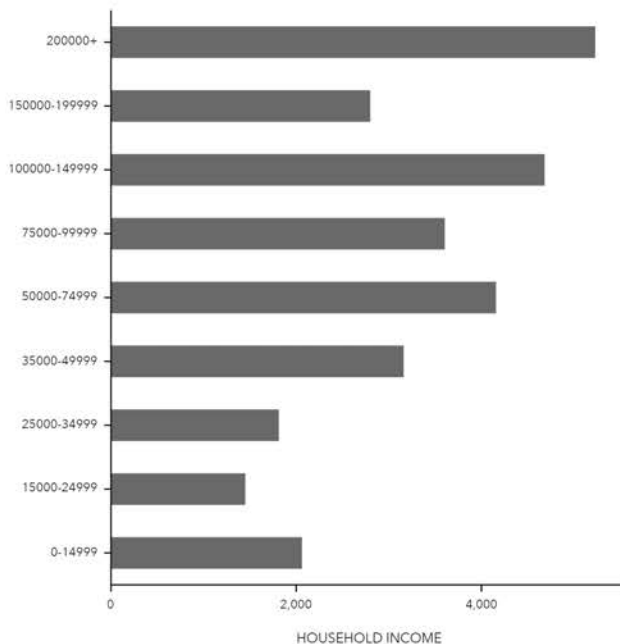
## KEY FACTS



## EDUCATION



## INCOME



## Tapestry Segments



## Average Household Size for this area

**2.11** which is less than the average for United States

Area	Value	0.00	4.00
Maricopa County	2.69		
Arizona	2.64		
United States	2.59		
This area	2.11		

## EMPLOYMENT



**BARCLAY**  
GROUP

2415 E Camelback Rd, Suite 900  
Phoenix, Arizona, 85016  
www.BarclayGroup.com  
**Leasing: 602.224.4166**

**Brett Sheets**  
Senior Vice President Leasing  
602.224.4147 Direct  
602.908.8837 Cell  
bsheets@barclaygroup.com

**Kristin Walrod**  
Director Leasing  
602.224.4171 Direct  
480.521.4822 Cell  
kwalrod@barclaygroup.com

**Matthew Archer**  
Leasing Associate  
602.224.4160 Direct  
602.908.8680 Cell  
marcher@barclaygroup.com